

Kronos Instructions for Installing Java (JRE 1.5.0 update 11) for the Version 6.0 upgrade

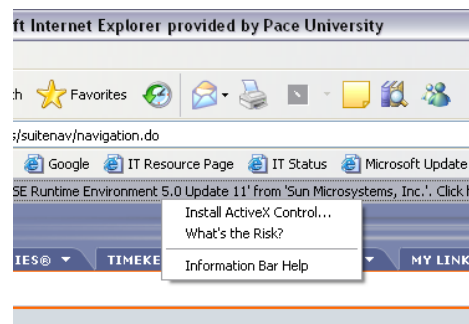
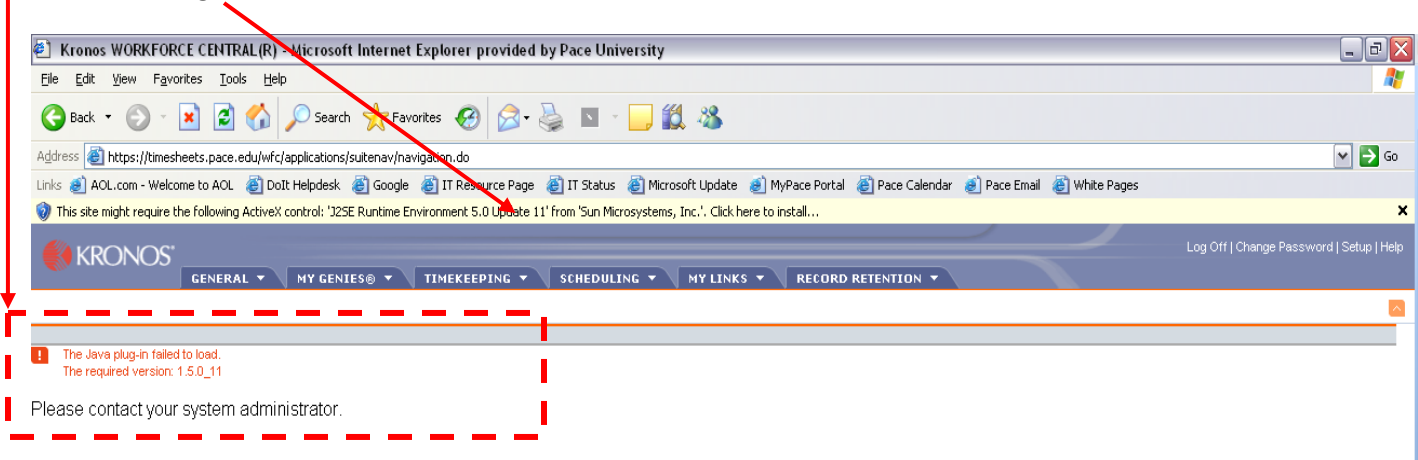
In order to view the new version of Kronos you may be prompted to install a new version of Java, J2SE Runtime Environment 5.0 update 11.

Open your Internet Explorer web browser and type the URL for the Kronos Logon Screen, <https://timesheets.pace.edu>.

Note: If your screen stalls for several minutes after login without the software installation bar appearing, contact the FIS helpdesk (fis@pace.edu or ext. 22899), the Doit Helpdesk (doithelpdesk.pace.edu or ext 3 3648), or your department's IMO for assistance.

Instructions:

You may be prompted to install **J2SE Runtime Environment 5.0 Update 11**
- click on the gold bar underneath the URL to install the correct version of Java.

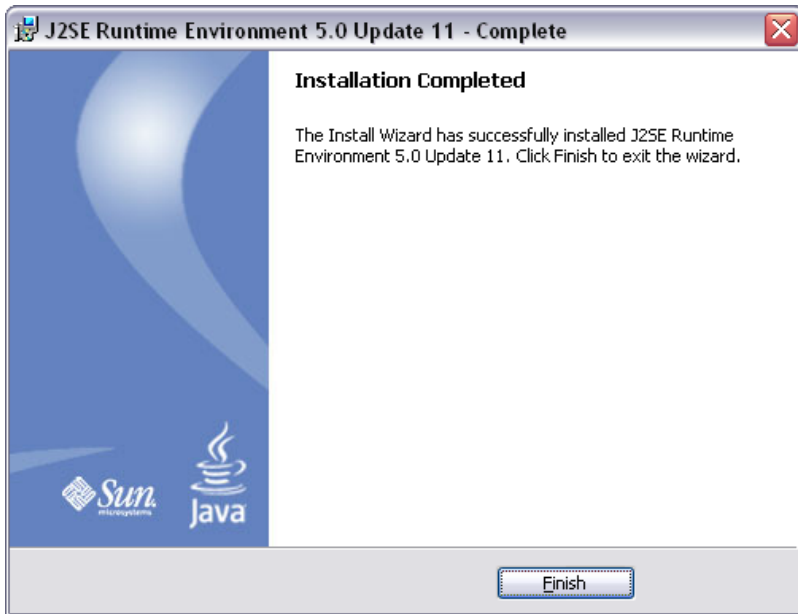
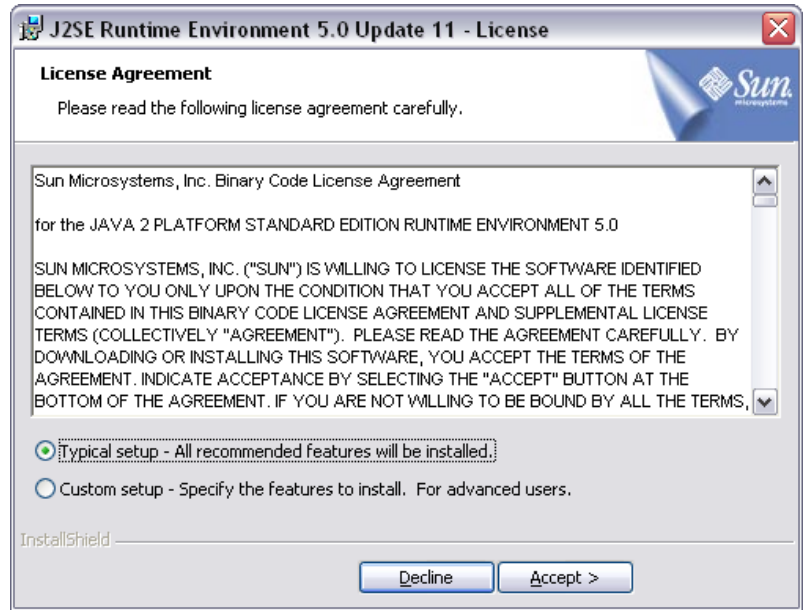


Once you click on the gold bar, it will instruct you to "Install ActiveX Control".



Internet Explorer will prompt you to install **J2SE Runtime Environment 5.0 Update 11**. Click on the "INSTALL" button to begin the installation process.

Click on the "ACCEPT" button.



Click on the "FINISH" button.

Based on your access your timecard or a list of your employee(s) will be displayed.