

Combined BBA Public Accounting/MS Taxation



Your Lubin BBA: A Rewarding Career in a Critical Role

Earn a combined BBA/MS at Lubin for a streamlined path to success:

- Accelerated
- Both degrees in five years
- Launch as a CPA
- Navigate complex tax environments successfully
- Distinguish yourself as a taxation specialist
- Expand your professional preparation in accounting and law

The BBA Accounting/MS Taxation combined degree is a unique, five-year, full-time program that builds on Lubin's strong reputation in accounting and tax. Graduates meet the 150-credit requirement for the CPA exam while simultaneously obtaining an in-depth understanding of tax law.

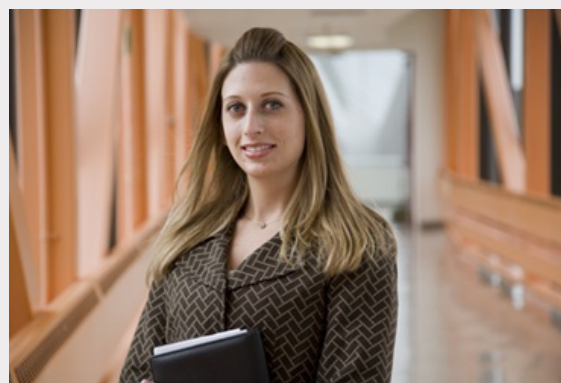
16%

Expected accounting job growth by 2020 (Source: U.S. Bureau of Labor Statistics)

Gain Useful Skills and Practical Experience

Since 1906, Pace University has built a reputation as a globally recognized, nationally respected institution with premier programs in accounting. In fact, you can trace our beginnings to a school that educated accountants throughout New York City. Our combined degree program offers you the additional opportunity to gain a lucrative degree in taxation and prepare to quickly ascend the ladder of success. Through Lubin you'll gain:

- Exceptional [preparation for gaining licensure as a CPA](#)
- A BBA experience that delivers a solid foundation in [the core principles of accounting](#)
- An MS experience that provides the quantitative, analytical, research, and strategic skills requisite for a career in taxation
- Critical [foundational skills](#)
- [Essential knowledge](#) of business tax issues
- [Specialized insight](#) into complex tax



Join Us at Lubin

- [Request More Information](#)
- [Apply Now](#)
- [Campus Tours and Information Sessions](#)
- Visit the [Accounting Department Web site](#)
- Visit the [Taxation Department Web site](#)

[Request More Info](#)

[Apply Now](#)

An Exciting and Lucrative Career

PayScale ranks Pace in the top

15%

in the country for providing a strong return on investment.

The BBA Accounting/MS Taxation program is ideally suited for students entering the taxation departments of accounting firms, as well as others who require an in-depth understanding of both financial accounting rules and federal tax law. The program is a combined program with four major categories of courses: liberal arts, non-accounting business, accounting and taxation. The BBA in Accounting provides a thorough

scenarios

- An [elite reputation](#)



Click to [view curriculum for the combined BBA Accounting/MS in Taxation](#).

Launch Your Career with Lubin Connections

Lubin puts you at the center of the world's business life, through a network of alumni and corporate partners that reaches into major financial institutions, media companies, and growing businesses in every industry. Lubin has over 1,300 alumni at Big Four accounting firms; 190 plus are partner level and higher. Through our [LinkedIn mentoring program](#), you will connect with prominent Lubin alumni in your field. We get you out of the classroom and into internships and career-opening events. We also get you out and involved in this lively metropolitan area. This program is offered on the [New York City campus](#) only.

Take full advantage of your [dedicated team of advisers](#) while you're here. They can guide you through the program and into your career, opening doors and making connections for you.

Pace University has the largest internship program in the Metropolitan New York area.

Gain valuable experience in one or more [internships](#)—with internationally respected companies. Students majoring in Accounting and Taxation have interned at:


- AIG
- Barclays
- Deloitte & Touche LLP
- Deutsche Bank
- Disney
- Ernst & Young
- Goldman Sachs
- Grant Thornton
- IBM
- KPMG
- Morgan Stanley
- PricewaterhouseCoopers

972 students [from 84 countries](#). Build your global network and take it with you when you graduate!

Admission Requirements

The application process can feel stressful—lots of forms to fill out, deadlines, tours, interviews—but know that we are right here with you every step of the way. Visit the "[How to Apply](#)" page for easy guidelines for submitting your application. In addition to the [application](#), official high school transcripts, and college transcripts (for transfer

understanding of how financial information is used by management, the government, and the public. You can begin taking the CPA exam in New York during the fifth year of the program. There is an intensive exam review program provided for this purpose. Through the MS component of the program, you learn how to quantify risk and predict shifts in the tax environments that affect industry. Lubin's combined program will prepare you to become a successful CPA with the additional tax skills necessary to succeed in a competitive business climate. Here's what to expect:

- **Excellent compensation: \$93,371** is the average starting salary for recent Lubin graduates with an MS in Taxation (*Source: Pace University Career Services Annual Reports*)
- **Accountants and auditors** are among the "5 Most In-Demand Jobs" in 2014 (*Source: Time.com, 2014*)
- **Job growth of 16%:** Accounting is the fastest growing of all business disciplines, with a projected job growth of 16% by 2020. An additional 190,700 accounting and auditing jobs will need to be filled during that time period. (*Source: U.S. Bureau of Labor Statistics*)
- **Earning power:** Pace has been ranked by Forbes.com as one of the top 20 "[colleges that will make you rich](#)"
- In the 2014-2015 **PayScale College Salary Report**, Lubin ranked in the top 11% for Best Colleges for Business Majors. 
- Lubin's undergraduate accounting program is ranked in the Top 50 by the **Public Accounting Report**, which is widely circulated to CPA firms who hire Lubin students.
- **Make your career move** with one of the over 300 employers who recruit Pace graduates every year
- **Exciting opportunities** at respected companies and organizations. Companies that have hired accounting and taxation graduates include:

- Bank of New York
- BDO Seidman
- Deloitte & Touche LLP
- Ernst & Young
- Grant Thornton
- JPMorgan Chase & Co.
- KPMG

students), a personal statement/essay, and two letters of recommendation in sealed envelopes are required for admission. SAT I, ACT, and/or TOEFL scores should be sent directly to the [Admissions](#) office.

For admission information, please contact:

New York City campus

Undergraduate Admission

Phone: 212-346-1323

E-mail: ugnyc@pace.edu

Click for information about [campus tours and information sessions](#), or call 212-346-1323 to schedule a tour. To request a brochure, catalog, application packet, or other printed materials, please fill out our [online form](#). You may also call 1-800-874-PACE or send your request via e-mail to infoctr@pace.edu.

[Request More Info](#)

[Apply Now](#)

- Marcum
- PricewaterhouseCoopers
- RSM McGladrey
- The Internal Revenue Service
- Philip Morris
- PricewaterhouseCoopers
- RSM McGladrey

New York City: Exceptional Access to Opportunities

In the center of New York City's business life, Lubin introduces you to successful business leaders and thriving multinational corporations. Connect directly with the world-class individuals who serve as an [Executive- or Entrepreneur-in-Residence](#) at Pace. We nurture relationships with many of the world's leading executives, to broaden and deepen your learning experience—far beyond what you can expect at any other business school:

- Meet [top executives](#) when they visit your classes and lecture on campus.

Off campus, we get you *through* the door and *behind the scenes* for unique opportunities, thanks to our rich and well-developed network of alumni and corporate partners. Common locales include:

- **Big Four:** Visit the headquarters of the Big Four accounting firms
- **A Fortune 100** company headquarters in metropolitan New York City
- **The Fed:** Research at the Federal Reserve Bank - almost 100 Lubin alumni are employed here
- **NYSE:** The rush of the trading floor

\$("#btmNav ul").html("

- [About Us](#)
- [Academic Programs](#)
 - [News](#)
 - [Events](#)
 - [Support Pace](#)
 - [Apply Now](#)
- [Request Information](#)
 - [Contact Us](#)

");

Source URL: <http://www.pace.edu/lubin/accounting-and-taxation-degree>