

Email Client Configuration Secure Socket Layer

Information Technology Services
2010

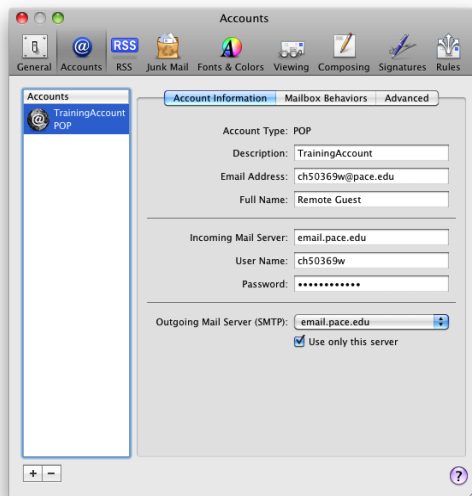
Table of Contents

A. Apple Mail [Mac OSX Leopard].....	1
1. POP SSL Secure Settings.....	1
2. IMAP SSL Secure Settings.....	2
B. Apple Mail [Version 2.1.3].....	4
1. POP SSL Secure Settings.....	4
2. IMAP SSL Secure Settings.....	5
C. Entourage 2004 for Mac.....	6
1. POP SSL Secure Settings.....	6
2. IMAP SSL Secure Settings.....	8
D. Entourage 2008 for Mac.....	10
1. POP SSL Secure Settings.....	10
2. IMAP SSL Secure Settings.....	11
E. Outlook Express 6.....	13
F. Mozilla Thunderbird 2.....	15
G. Windows Live Mail.....	16

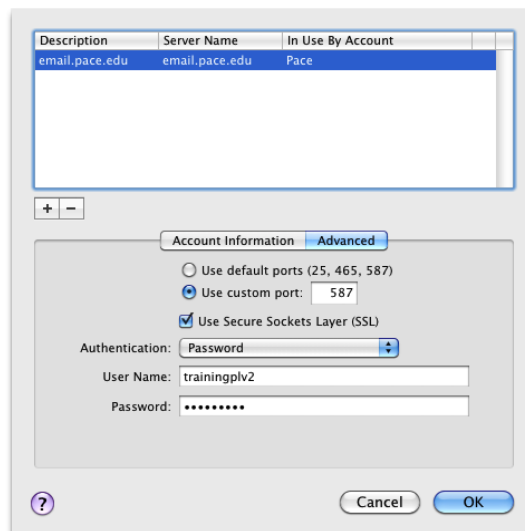
A. Apple Mail [Mac OS X Leopard]

1. POP SSL Secure Settings

- open **Apple Mac Mail**
- click **Mail** and select **Preferences**
- click **Accounts** and select **Accounts Information** tab
- select your **POP** account under the **Accounts** column



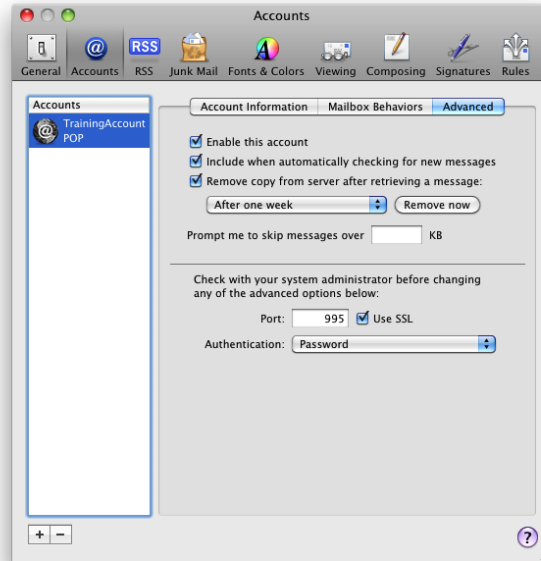
- click drop down menu next to **Outgoing Mail Server (SMTP)**
- click **Edit SMTP Server List**



- click the **Advanced** tab
- click **Use custom ports** and change the port number to **587**
- place a check in the box next to **Use Secure Sockets Layer (SSL)**
- click drop down menu next to **Authentication** and select **Password**
- type *yourMyPacePortal Username* and *Password* in the spaces provided
- click **OK**

Assigning SSL Secure Server Settings

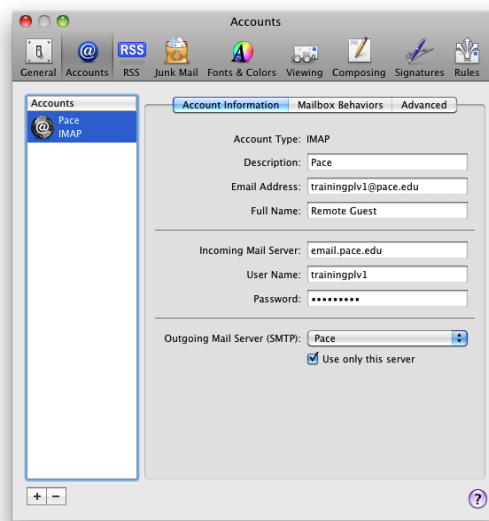
- click the **Advanced** tab



- change the **Port** number to **995**
- place a check in the box next to **Use SSL**
- click drop down menu next to **Authentication** and select **Password**

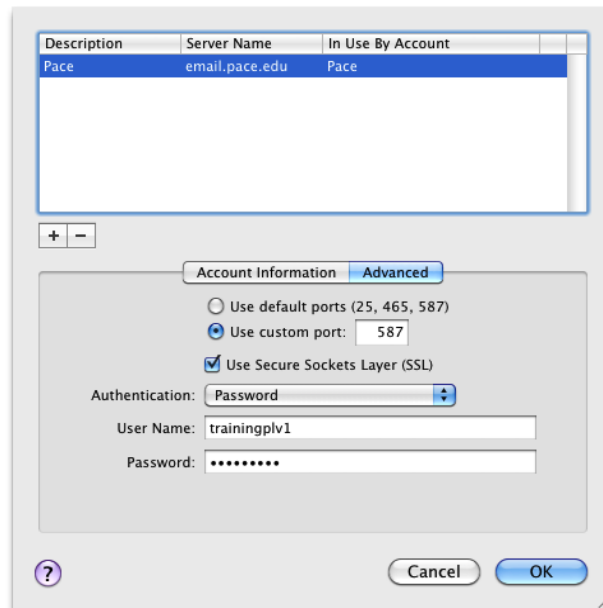
2. IMAP SSL Secure Settings

- open **Apple Mac Mail**
- click **Mail** and select **Preferences**
- click **Accounts** and select **Accounts Information** tab
- select your **IMAP** account under the **Accounts** column

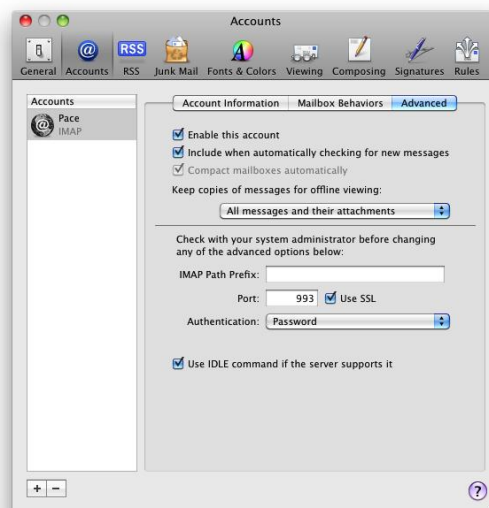


- click drop down menu next to **Outgoing Mail Server (SMTP)**

- click **Edit SMTP Server List**



- click the **Advanced** tab
- click **Use custom ports** and change the port number to **587**
- place a check in the box next to **Use Secure Sockets Layer (SSL)**
- click drop down menu next to **Authentication** and select **Password**
- type *yourMyPacePortal Username* and *Password* in the spaces provided
- click **OK**
- click the **Advanced** tab

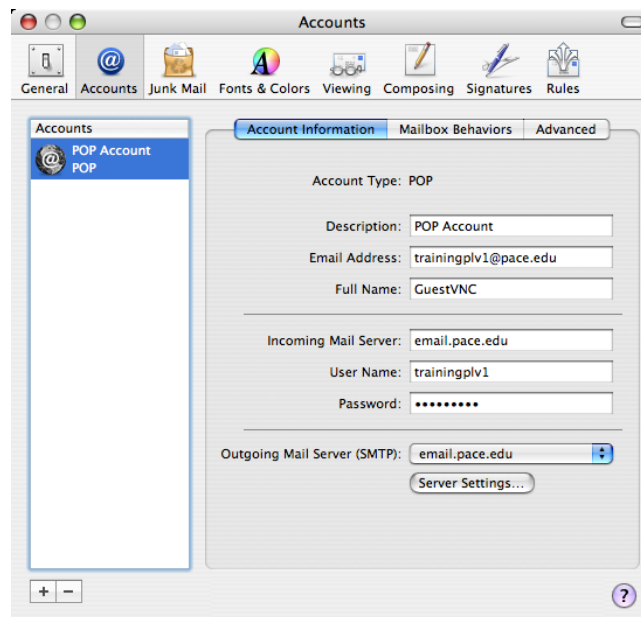


- change the **Port** number to **993**
- place a check in the box next to **Use SSL**
- click drop down menu next to **Authentication** and select **Password**

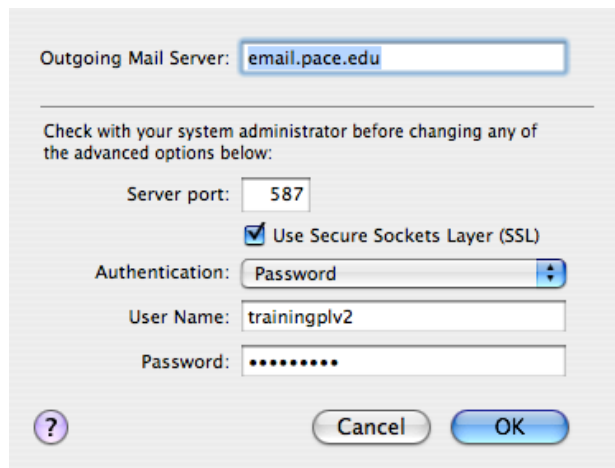
B. Apple Mail [Version 2.1.3]

1. POP SSL Secure Settings

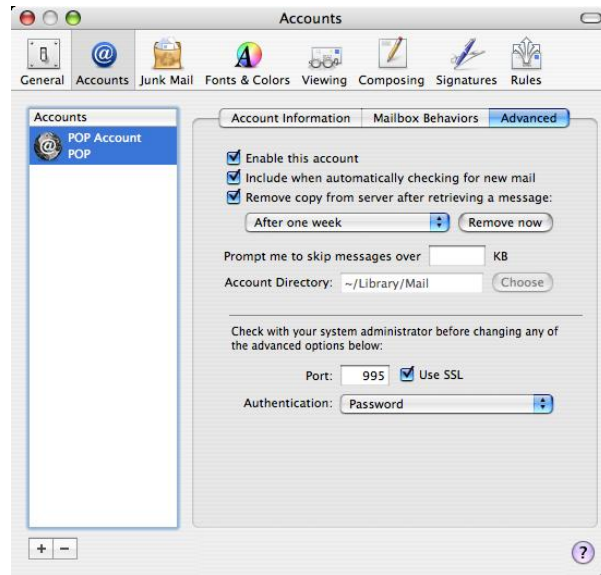
- open **Apple Mac Mail**
- click **Mail** and select **Preferences**
- click **Accounts** and select **Accounts Information** tab
- select your **POP** account under the **Accounts** column



- click **Server Settings**



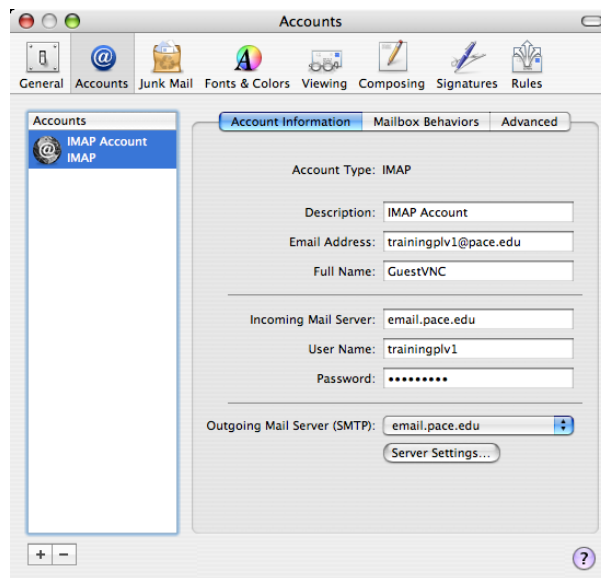
- change the **Server Port** number to **587**
- place a check in the box next to **Use Secure Sockets Layer (SSL)**
- click drop down menu next to **Authentication** and select **Password**
- type *yourMyPacePortal Username* and *Password* in the spaces provided
- click **OK**
- click the **Advanced** tab



- change the **Port** number to **995**
- place a check mark next to **Use SSL**
- click drop down menu next to **Authentication** and select **Password**

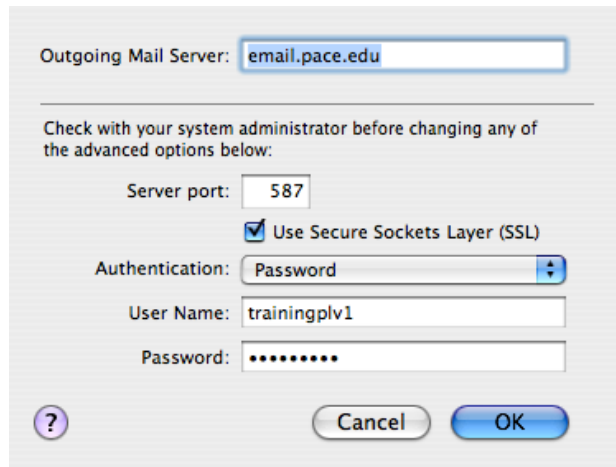
2. IMAP SSL Secure Settings

- open **Apple Mac Mail**
- click **Mail** and select **Preferences**
- click **Accounts** and select **Accounts Information** tab
- select your **IMAP** account under the **Accounts** column

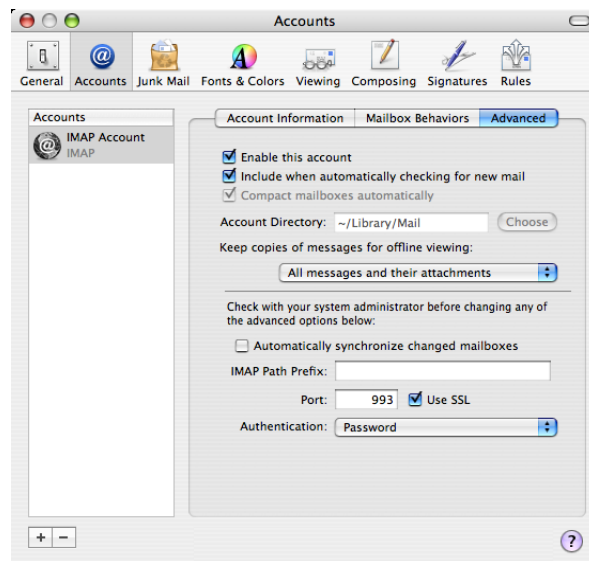


- click **Server Settings**

Assigning SSL Secure Server Settings



- change the **Server Port** number to **587**
- place a check in the box next to **Use Secure Sockets Layer (SSL)**
- click drop down menu next to **Authentication** and select **Password**
- type *yourMyPacePortal Username* and *Password* in the spaces provided
- click **OK**
- click the **Advanced** tab

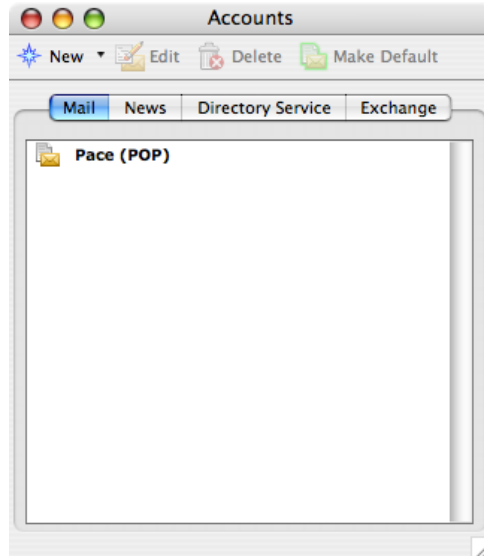


- change the **Port** number to **993**
- place a check in the box next to **Use SSL**
- click drop down menu next to **Authentication** and select **Password**

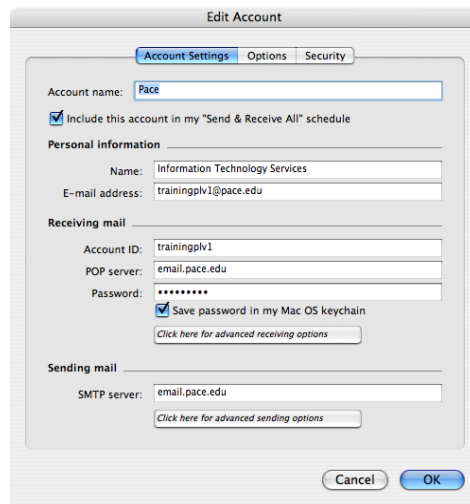
C. Entourage 2004 for Mac

1. POP SSL Secure Settings

- open **Microsoft Entourage 2004**
- click **Tools** and select **Accounts**

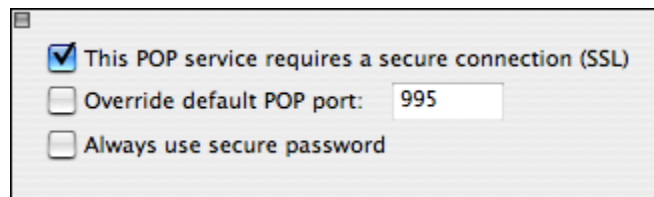


- double-click on your POP account



To set Receiving mail options:

- click **Click here for advanced receiving options** button

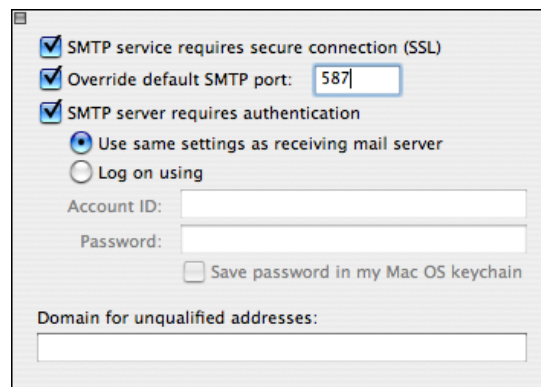


- click next to **This POP service requires a secure connection (SSL)**
- verify the **override default POP port** is **995**
- click the small box on the top left hand corner to exit

Assigning SSL Secure Server Settings

To set Sending mail options:

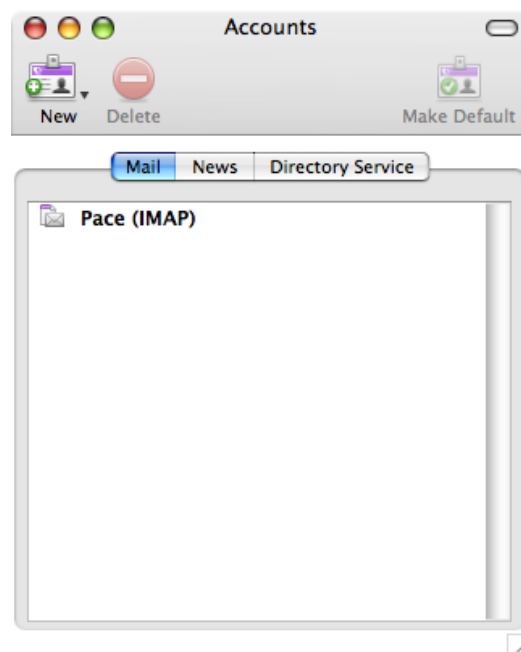
- click **Click here for advanced sending options** button



- click next to **SMTP service requires secure connection (SSL)**
- place a check in the box next to **override default SMTP port**
- change the **port** number to **587**
- place a check in the box next to **SMTP server requires authentication**
- select radio button next to **Use same settings as receiving mail server**
- click the small box on the top left hand corner to exit
- click **OK**

2. IMAP SSL Secure Settings

- open **Microsoft Entourage 2004**
- click **Tools** and select **Accounts**



- double-click on your **IMAP** account

To set Receiving mail options:

- click **Click here for advanced receiving options** button

- click next to **This IMAP service requires a secure connection (SSL)**
- verify the **override default IMAP port** is **993**
- click the small box on the top left hand corner to exit

To set Sending mail options:

- click **Click here for advanced sending options** button

- click next to **SMTP service requires secure connection (SSL)**

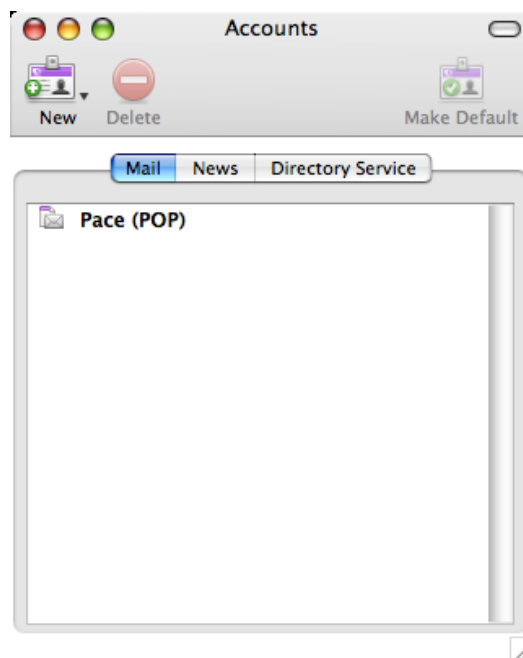
Assigning SSL Secure Server Settings

- place a check in the box next to **override default SMTP port**
- change the **port** number to **587**
- place a check in the box next to **SMTP server requires authentication**
- select radio button next to **Use same settings as receiving mail server**
- click the small box on the top left hand corner to exit
- click **OK**

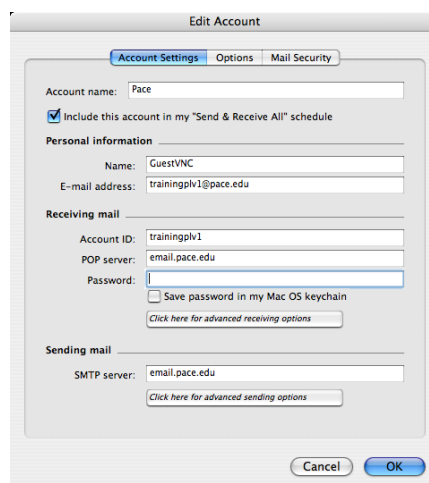
D. Entourage 2008 for Mac

1. POP SSL Secure Settings

- open **Microsoft Entourage 2008**
- click **Tools** and select **Accounts**

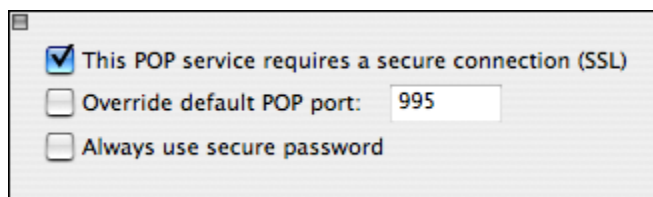


- double-click on your POP account



To set Receiving mail options:

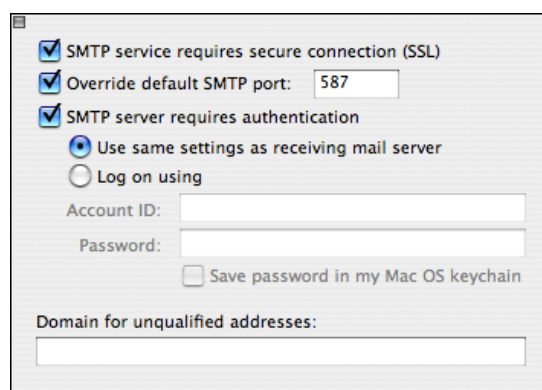
- click **Click here for advanced receiving options** button



- click next to **This POP service requires a secure connection (SSL)**
- verify the **override default IMAP port is 995**
- click the small box on the top left hand corner to exit

To set Sending mail options:

- click **Click here for advanced sending options** button

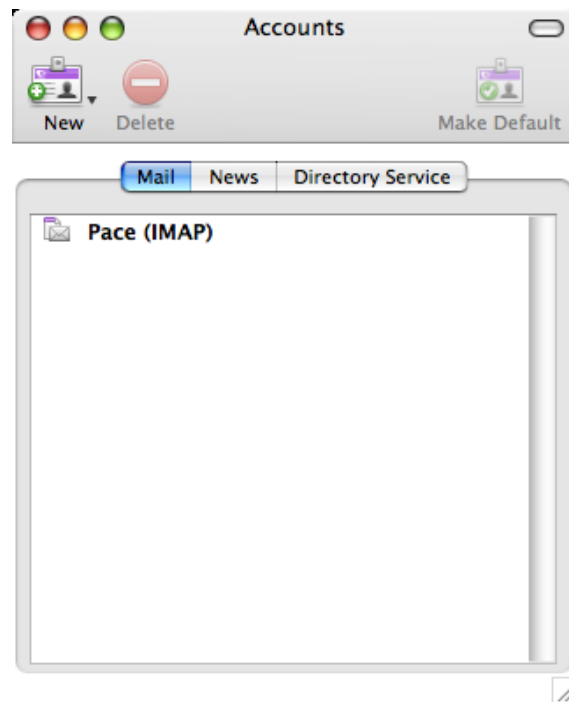


- click next to **SMTP service requires secure connection (SSL)**
- place a check in the box next to **override default SMTP port**
- change the **port** number to **587**
- place a check in the box next to **SMTP server requires authentication**
- select radio button next to **Use same settings as receiving mail server**
- click the small box on the top left hand corner to exit
- click **OK**

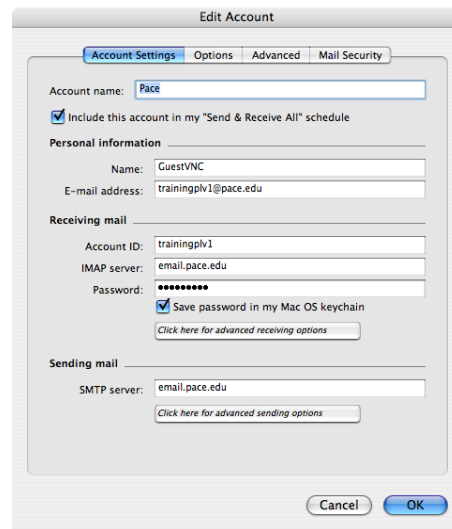
2. IMAP SSL Secure Settings

- open **Microsoft Entourage 2008**
- click **Tools** and select **Accounts**

Assigning SSL Secure Server Settings

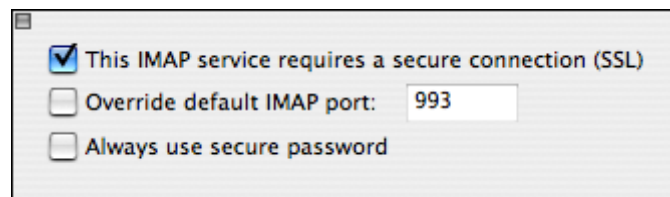


- double-click on your IMAP account



To set Receiving mail options:

- click **Click here for advanced receiving options** button

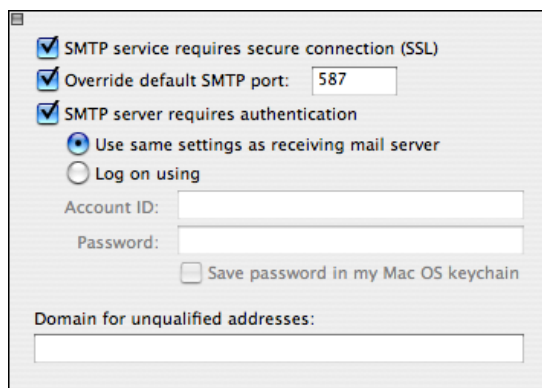


- click next to **This IMAP service requires a secure connection (SSL)**
- verify the **override default IMAP port** is **993**

- click the small box on the top left hand corner to exit

To set Sending mail options:

- click **Click here for advanced sending options** button

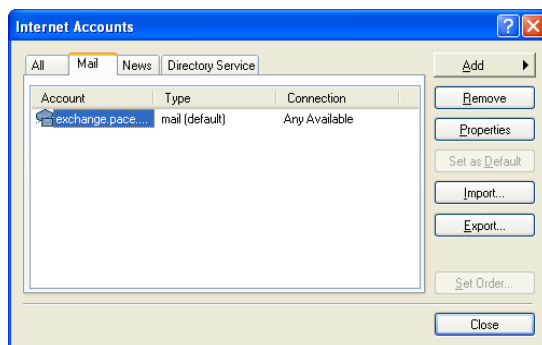


- click next to **SMTP service requires secure connection (SSL)**
- place a check in the box next to **override default SMTP port**
- change the **port** number to **587**
- place a check in the box next to **SMTP server requires authentication**
- select radio button next to **Use same settings as receiving mail server**
- click the small box on the top left hand corner to exit
- click **OK**

E. Outlook Express 6

- open **Outlook Express 6**
- click **Tools** and select **Accounts**

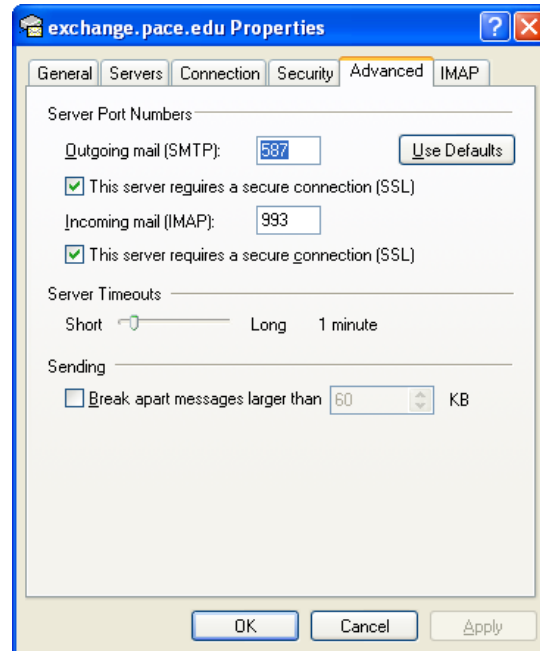
The *Internet Accounts* dialog box displays.



- select your desired email account and click **Properties**
- click **Servers** tab
- place a check in the box next to **My server requires authentication** under **Outgoing Mail Server**

Assigning SSL Secure Server Settings

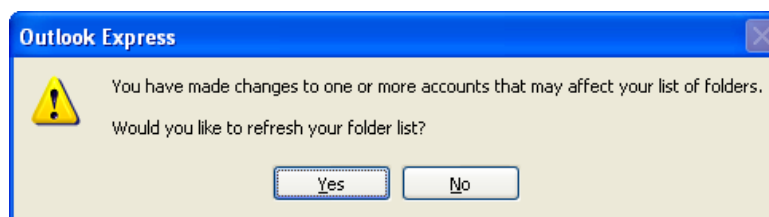
- click **Settings**
- click **Use same settings as my incoming mail server**
- click **OK**
- click **Advanced** tab



- change the **Outgoing mail (SMTP)** port number to **587**
- place a check in both boxes next to **This server requires a secure connection (SSL)** under **Server Port Numbers**

For your specific Incoming mail type IMAP or POP, enter the following port number:

- if using IMAP, next to **Incoming mail (IMAP)** change the port number to **993**
-or-
- if using POP, next to **Incoming mail (POP)** change the port number to **995**
- click **Apply**
- click **OK**
- click **Close**

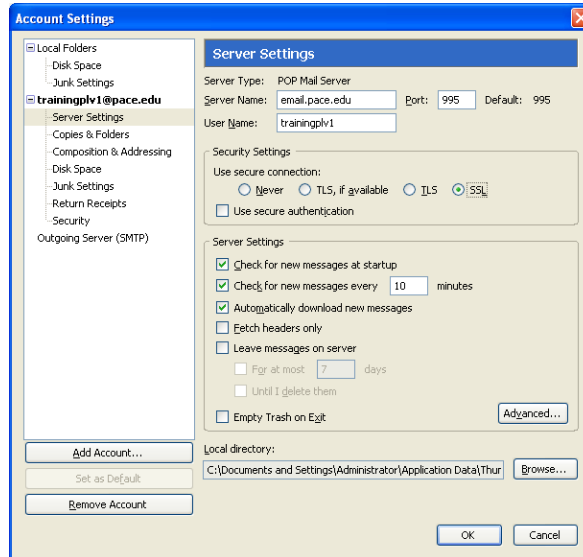


- click **Yes**

F. Mozilla Thunderbird 2

- open **Mozilla Thunderbird 2**
- click **Tools** and select **Account Settings**

The *Account Settings* dialog box displays.

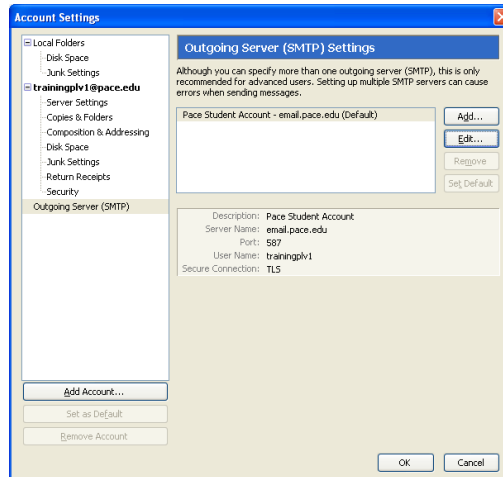


- select **Server Settings**

For your specific Incoming mail type IMAP or POP, enter the following port number:

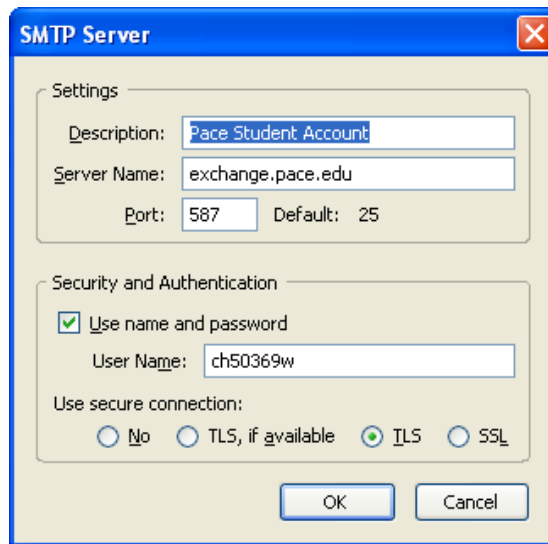
- if using **POP Mail Server**, change port number to **995**
- or-
- if using **IMAP Mail Server**, change port number to **993**
- select **SSL** under **Security Settings**
- select **Outgoing Server (SMTP)** in the navigation pane

The *Outgoing Server (SMTP) settings* pane displays.



Assigning SSL Secure Server Settings

- click **Edit**

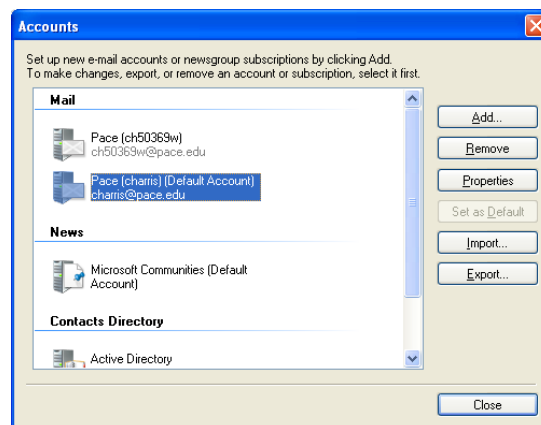


- change the **Port** to **587** under **Settings**
- place a check next to **Use name and password** under **Security and Authentication**
- select **TLS** under **Use secure connection**
- click **OK**
- click **OK**

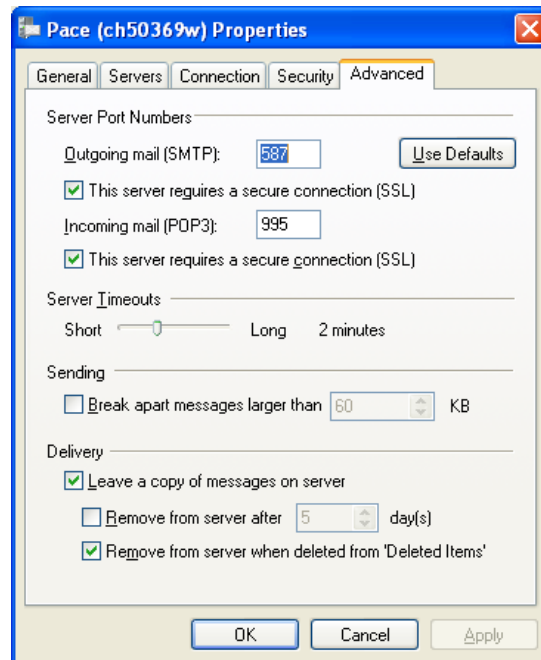
G. Windows Live Mail

- open **Windows Live Mail**
- click **Tools** and select **Accounts**

The *Accounts* dialog box displays.



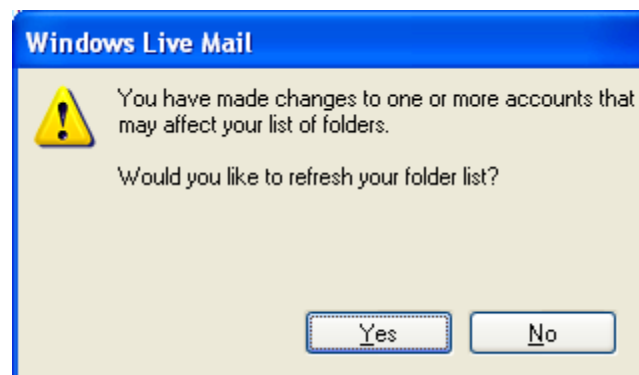
- select your desired email account under **Mail**
- click **Properties**
- click **Advanced** tab



- change the **Outgoing mail (SMTP)** port number to **587**

For your specific Incoming mail type IMAP or POP, enter the following port number:

- if using **Incoming mail (POP)**, change port number to **995**
-or-
- if using **Incoming mail (IMAP)**, change port number to **993**
- select both boxes next to **This server requires a secure connection (SSL)** under **Server Port Numbers**
- click **Apply**
- click **OK**
- click **Close**



- click **Yes**