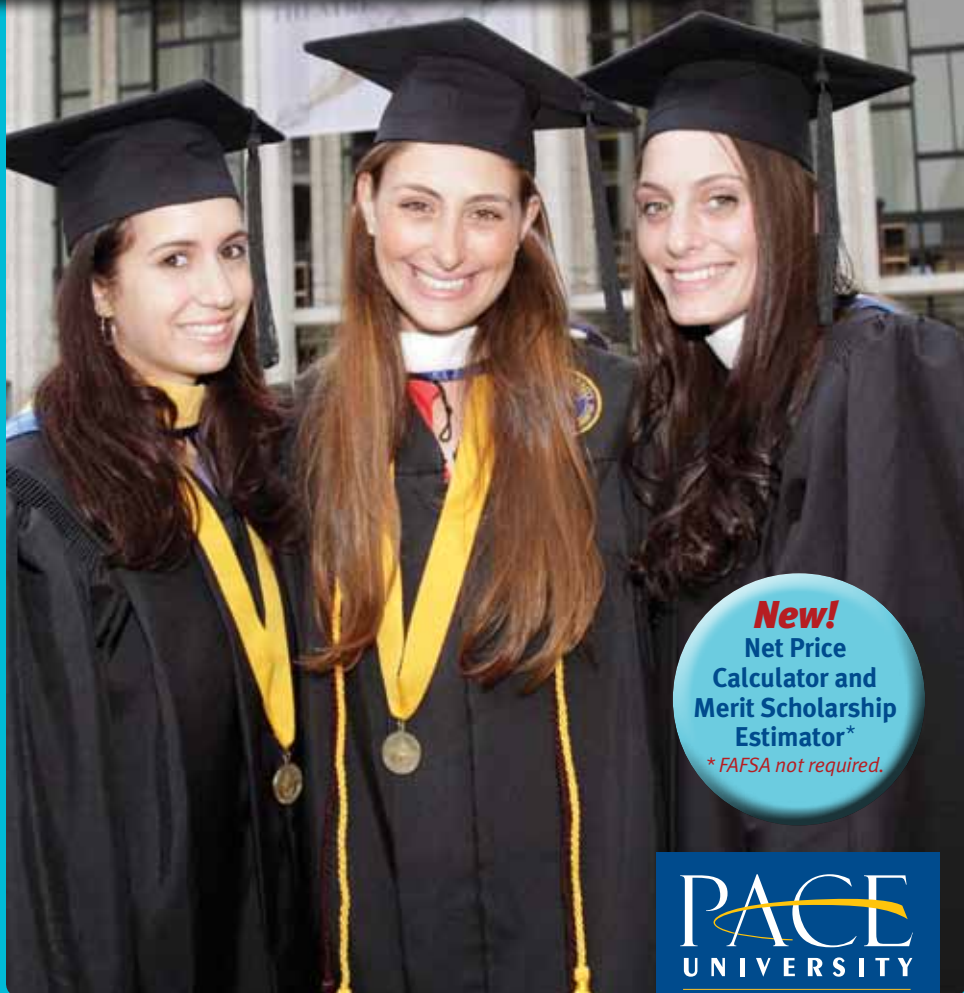


# Discover how affordable a Pace education can be.

## Put the Pace Advantage to Work for You:

- Superior professional education
- Two strategic New York locations
- Robust scholarships and financial aid



**New!**  
Net Price  
Calculator and  
Merit Scholarship  
Estimator\*

*\* FAFSA not required.*

**PACE**  
UNIVERSITY

Work toward greatness.

# A Pace degree pays for itself.



With the largest internship program in the New York Metropolitan Area and established relationships with *Fortune* 500 companies near both our New York City and Westchester campuses, Pace helps ensure that you get a good return on your investment by helping prepare you for professional success.

**#1** university in New York  
for internships  
—*U.S. News Short List*

More  
than  
**1,450**

students participate in internships,  
practicums, and field work experiences

More  
than  
**2,800**  
alumni hold executive-level positions  
(president, CEO, CFO, etc.) within  
their organizations

**12%** higher than  
national average  
undergraduate students  
obtaining employment

“One of the top 20 colleges in the nation that will  
make you rich.”

—Forbes.com

# An education that produces a lifetime of professional rewards. It's within your reach.

“Pace was one of my top choices because of its reputation and location, as well as it being one of the most affordable schools. The financial aid package was much more than I could have hoped for! Before my college search, I thought I was destined for a state or community college. Without the help of financial aid, I would never have been able to attend Pace.” { Kristen Carbone '11, Acting }



Financial assistance can come from many places, including scholarships, grants, on-campus employment, and loans. **Pace values strong academic performance by offering a wealth of merit-based scholarships to high achieving students.** University-sponsored scholarships are also awarded to students on the basis of financial need and service to the community.

- **\$17,846:** Average amount of institutional aid offered to all new undergraduate admits
- **96 percent:** Percentage of first-year students receiving financial aid
- **More than \$277 million:** Amount Pace students received in aid last year
- **\$4,000-\$18,500:** Range of merit-based awards

## Merit Scholarship Estimator

Use our new Merit Scholarship Estimator, designed to help students and their families see how much merit aid is granted based on academic achievement. *No FAFSA required to receive award.*

# How does our Net Price stack up?

## The Net Price Comparison: Pace vs. Public University

<b>Financial aid package: \$39,850</b>
Grants: <b>\$27,400</b>
Work study: <b>\$4,000</b>
Student loans: <b>\$8,450</b>
Expected family contribution: <b>\$1,792</b>

Pace sticker price: **\$41,642**

*This is one example based on a particular family's financial situation. Family contributions can range from \$0 to more than \$50,000, depending on each family's specific circumstances.*

<b>Financial aid package: \$26,561</b>
Grants: <b>\$9,300</b>
Student loans: <b>\$17,261</b>
Expected family contribution: <b>\$1,792</b>

Public university sticker price: **\$28,353**

- To get started visit [www.pace.edu/calculator](http://www.pace.edu/calculator) •

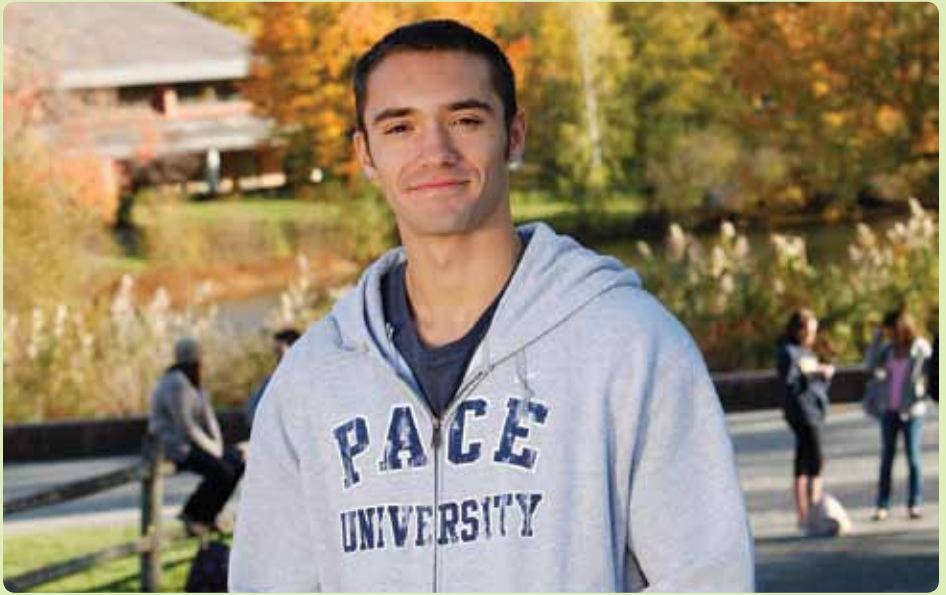
The Pace Net Price Calculator\* is an online tool designed to help students and their families estimate their financial aid package. **Many find that Pace is actually more affordable than similar public and private colleges due to the scholarships and financial aid awards offered to families.**

Results are based on 2011-2012 Cost of Attendance figures and student aid eligibility requirements. The calculator is designed to provide you with an estimation of your aid, but your final aid package will depend on your 2011-2012 FAFSA results and your official academic information.

*\*The federal government requires colleges and universities to post a net price calculator on their websites.*

**To be considered for full financial aid, you must complete the FAFSA form at [FAFSA.gov](http://FAFSA.gov).**

To apply, simply complete the Free Application for Federal Student Aid (FAFSA) by **February 15**. You can continue to file after this date; however, consideration for funds will be given on a first-come, first-served basis. Federal School Codes:  
**New York City: 002791 | Westchester (Pleasantville): 002792**



**At Pace, we understand that financing your education is crucial in the decision-making process.**

Our goal is to offer every student as much financial assistance as possible based upon availability and need.

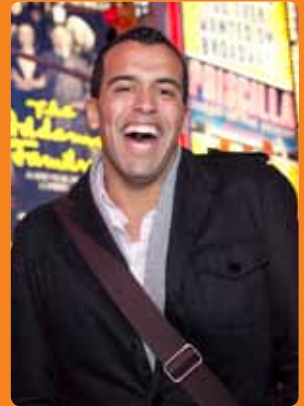
Below are the estimated educational cost budgets of full-time, matriculated undergraduates starting enrollment at Pace during the 2011-2012 academic year.

**\$17,846:** Average amount of institutional aid offered to all new undergraduate admits

2011-2012							
DIRECT COSTS	Tuition	NEW YORK RESIDENT*	\$33,962	WESTCHESTER RESIDENT*	\$ 33,962	NEW YORK and WESTCHESTER COMMUTER	\$ 33,962
	Standard Fees*		\$ 1,070		\$ 1,070		\$ 1,070
	Room and Board†		\$14,230		\$ 12,110		\$ 250
	<b>TOTAL DIRECT COSTS</b>		<b>\$49,262</b>		<b>\$ 47,142</b>		<b>\$ 35,282</b>
INDIRECT COSTS	Living Allowance	NEW YORK RESIDENT*	\$ 0	WESTCHESTER RESIDENT*	\$ 0	NEW YORK and WESTCHESTER COMMUTER	\$ 2,940
	Books		\$ 800		\$ 800		\$ 800
	Personal Expenses		\$ 1,270		\$ 1,270		\$ 1,270
	Transportation		\$ 600		\$ 600		\$ 1,350
<b>TOTAL DIRECT AND INDIRECT COSTS</b>			<b>\$ 51,932</b>	<b>\$ 49,812</b>	<b>\$ 41,642</b>		

# What is the bottom line?

Pace provides academic breadth, professional readiness, and affordability. For more than 100 years, our alumni have become successful professionals engaged in their communities and are constant reminders of the value of a Pace degree.



**Take the next step,**  
visit Pace today. Schedule a Campus tour  
at [www.pace.edu/explore](http://www.pace.edu/explore).

## Undergraduate Admissions



### **New York City Campus**

One Pace Plaza  
New York, NY 10038  
(212) 346-1323  
[ugnycc@pace.edu](mailto:ugnycc@pace.edu)

### **Westchester Campus**

861 Bedford Road  
Pleasantville, NY 10570  
(914) 773-3746  
[ugplv@pace.edu](mailto:ugplv@pace.edu)