

PACE UNIVERSITY

Campus Planning and Facilities

Week of May 28, 2024 Update

Energy & Sustainability

There will be a test dispatch for our demand response program at 15 Beekman later this week. Demand Response generates revenue for the University by curtailing our electric demand at times when the electric grid is most stressed (to avoid blackouts). Since 15 Beekman has not participated before, we will be testing the effectiveness of our response for 1 hour. Additionally, we were very conservative regarding our commitment and believe we will meet the target with very minor impact to the community (raising setpoints).

One Pace Plaza

- Repairs on Elevator Car #1 on the West Side of the building is expected to be complete by the end of this week. Parts are expected to be delivered and installed.

One Pace Plaza East Renovation

- The draft (Gross Maximum Price) GMP was issued to Pace. Turner presented the GMP to Pace on Tuesday, May 21. The team is working to bring the GMP to budget. Design Team is currently reviewing the GMP. All comments are due back to Turner Construction on Friday, May 31.
- The project team continues to evaluate key procurement packages for concrete, masonry, mechanical, electrical and theater equipment this week.
- Steel truss installation continues this week.
- Asbestos abatement continues with simultaneous demolition on other floors throughout the site.
- Spray on fireproofing application to existing steel is ongoing.

15 Beekman

- The 6th floor terrace railing replacement project is underway with vertical post and roofing/pavement installation through early June. The work is expected to be completed by end of this summer. The scaffolding will be in place until work is completed for safety measures.
- FDNY has agreed for Pace to maintain operations and use of the classrooms (on Levels 7-10) by lowering the sound of the speakers in the classrooms. This impacts the Zoom capabilities in the classroom. There will be an FDNY reinspection in the classrooms at 9:00 a.m. on June 13. The date has been coordinated to have minimal impact to summer sessions.

41 Park Row

There are ongoing issues with the occupancy/vacancy sensors on the 16th floor. The contractor is tentatively confirmed for Friday, May 31 early morning to troubleshoot and address the electrical issues. Project Manager is requesting approval for access.

Façade Inspection Safety Program (FISP)

PACE UNIVERSITY

Campus Planning and Facilities

Week of May 28, 2024 Update

One Pace Plaza East site FISP work continues in the courtyard. Sidewalk shed on the west side of the 9 Spruce Street entrance will be installed following further coordination with Turner in June.

Pleasantville Campus

- Lienhard Hall: 2nd Floor corridor construction is underway. Ongoing issues with fire alarms caused as a result of the construction work are in the process of being addressed. The contractor is troubleshooting the cause of the fire alarm panel faults and it is expected that they are cleared by Tuesday, May 28.
- Gas regulator replacement: The equipment is expected to arrive by May 31 with work commencing on the week of June 3. Townhouse Rows #2 and #3, Gannet Studio and Gannet Cottage will be the first buildings in which regulators will be replaced. A schedule of the work will be coordinated with the building occupants once the equipment has arrived.
- Goldstein Health and Fitness scoreboard replacement: Replacement work is scheduled to begin on June 3 and take approximately two weeks to complete. A tractor trailer will delivering materials and equipment on Monday, June 3rd. Unloading and turnaround will take place along the north and west sides of the fitness center and no impacts to campus activities or roadways is anticipated.
- Stair and pathway repairs will begin next week to address areas throughout the campus.

Haub School of Law

- The parking garage work is ongoing and on schedule. Our structural engineer will conduct a site visit on Friday, May 31.
- Stair and pathway repairs will begin next week to address areas throughout the campus.

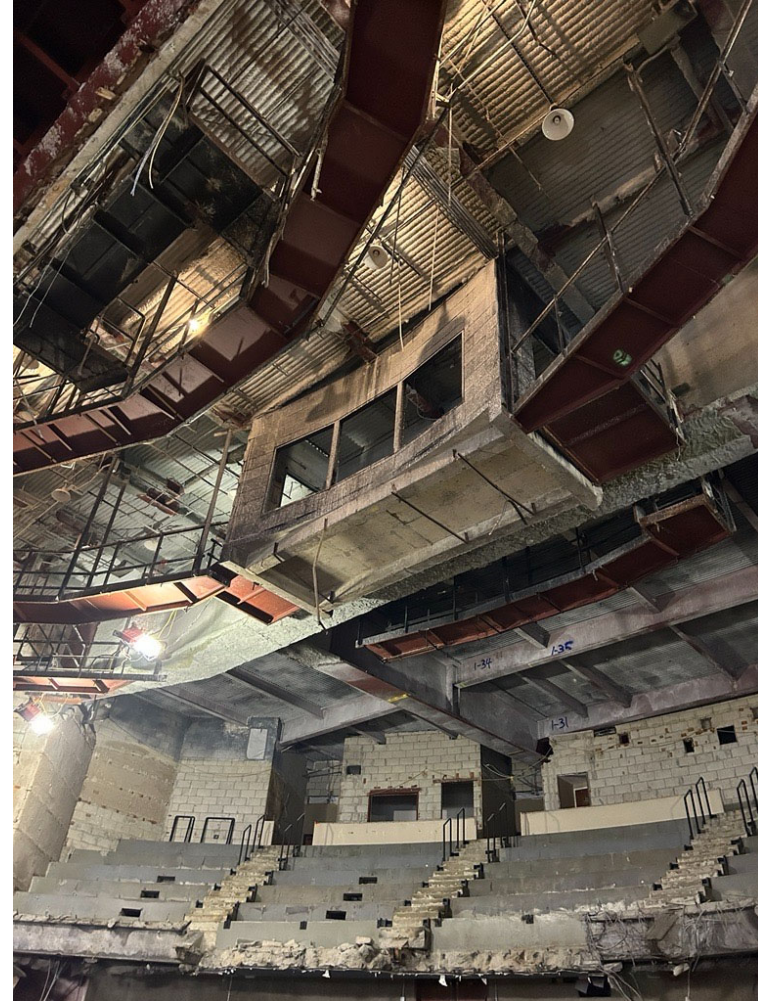
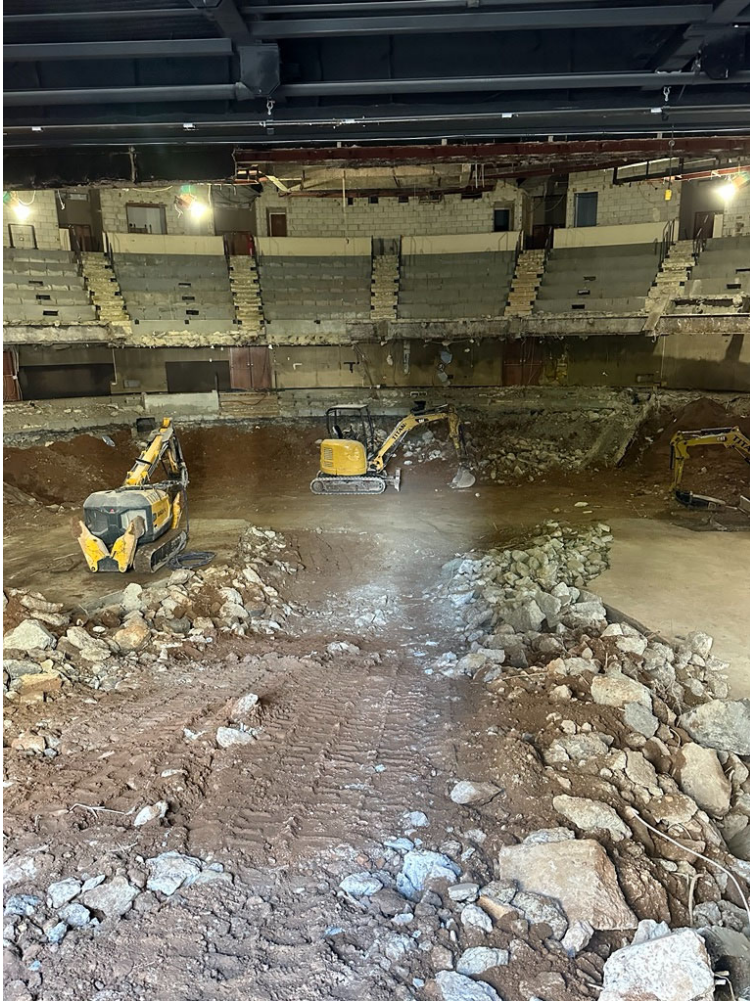
[Please view here for weekly updates](#)

1 Pace Plaza East Renovation - Progress Photos



Rigging and installation of enabling Truss is ongoing. Bolting, rigging and welding to occur.

1 Pace Plaza East Renovation - Progress Photos



Demolition of Schimmel Theatre continues.