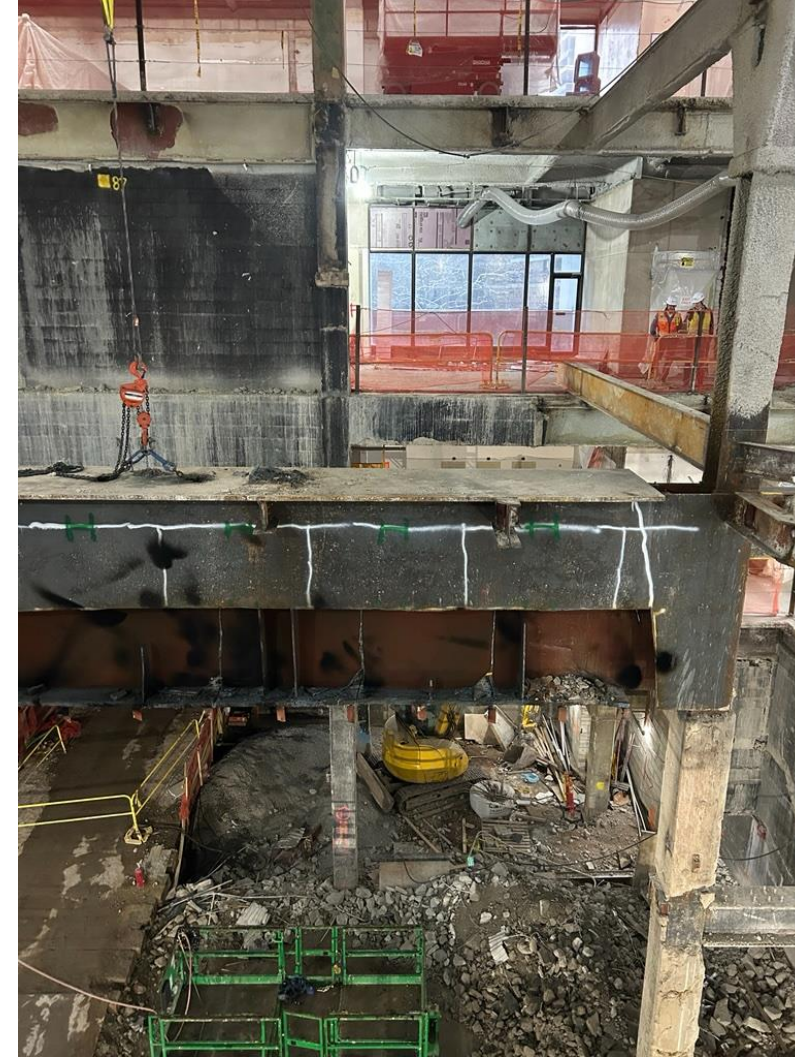
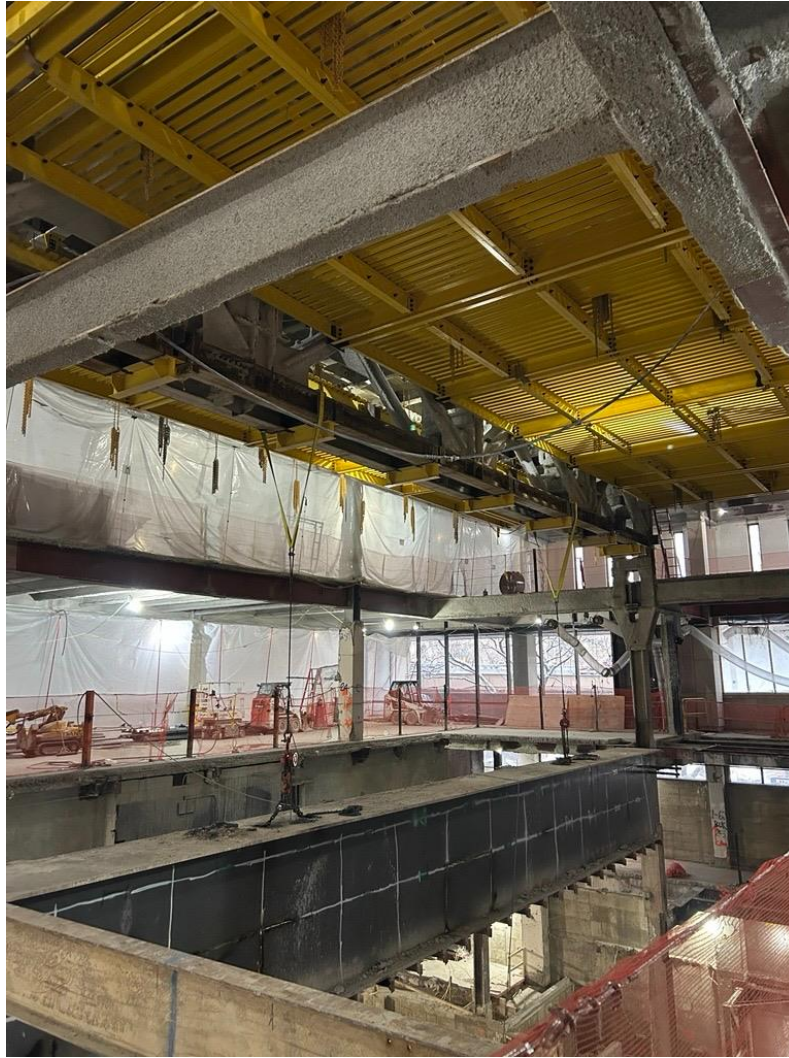


1 Pace Plaza East Renovation - Progress Photos



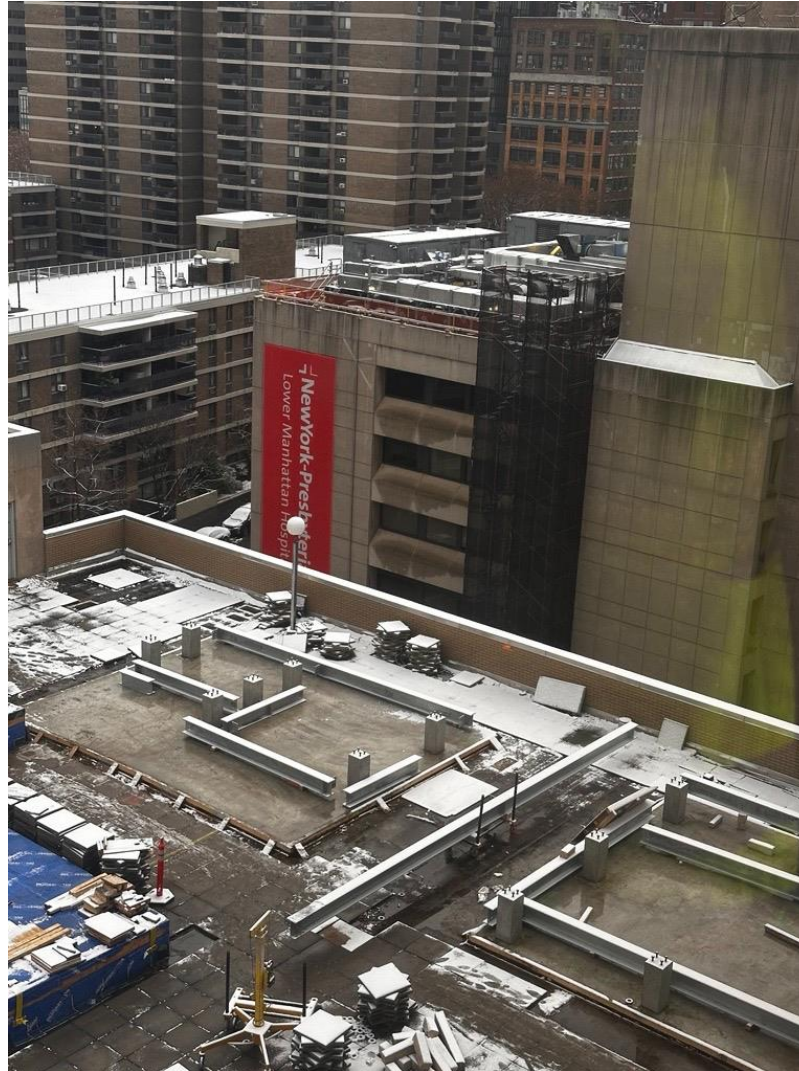
Progression of structural steel demolition at the Large Venue.

1 Pace Plaza East Renovation - Progress Photos



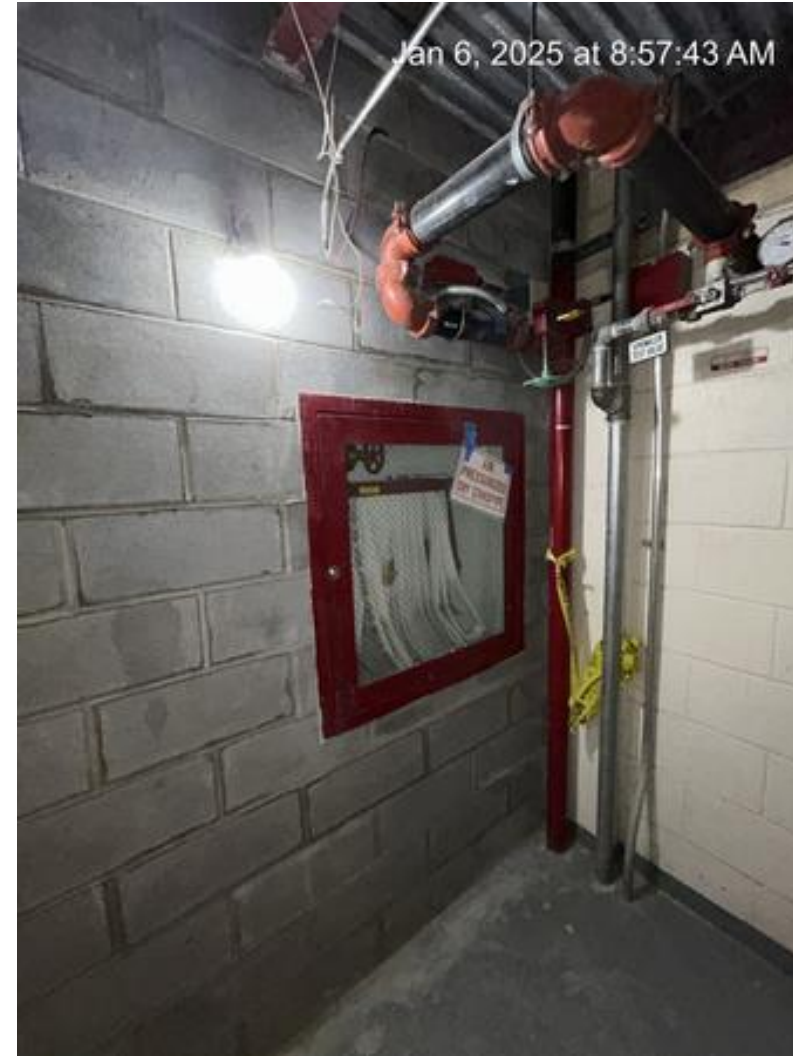
Large Venue girder truss has been completely demolished.

1 Pace Plaza East Renovation - Progress Photos



New steel dunnage for outdoor mechanical units has arrived on 4th floor roof.

1 Pace Plaza East Renovation - Progress Photos



CMU wall remediation in Maria's Tower stairwell.

1 Pace Plaza East Renovation - Progress Photos



Waterproof coating and new coping installed to the existing Maria's Tower parapet walls.