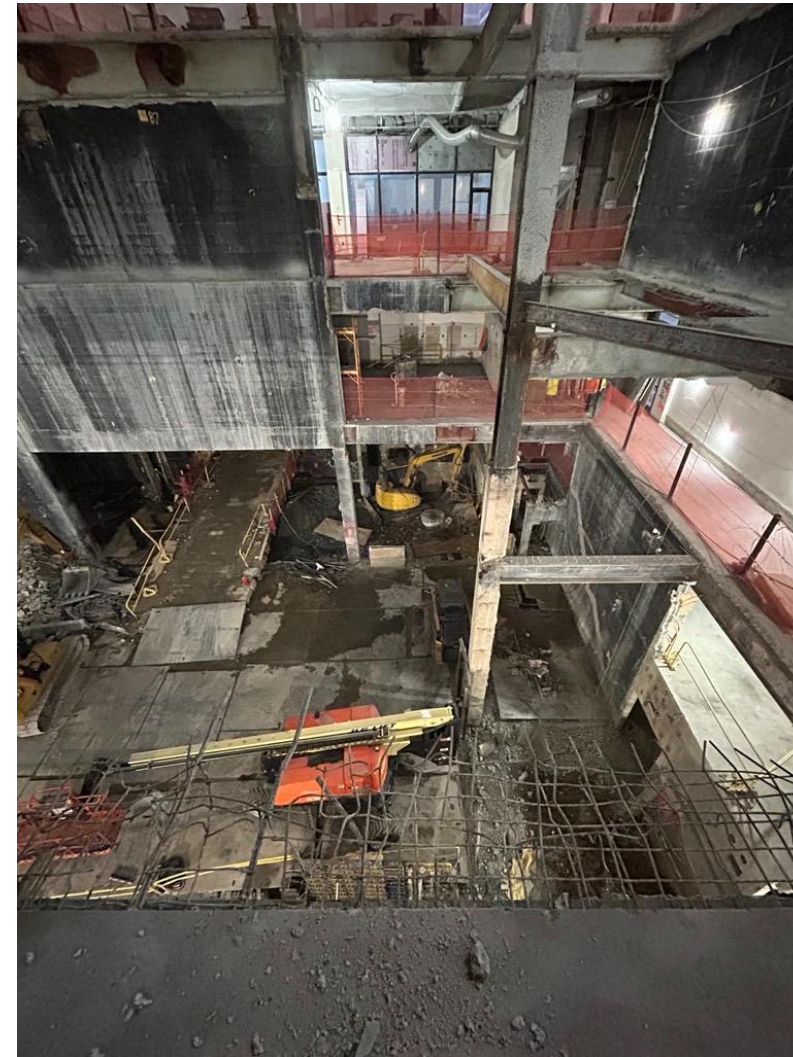


1 Pace Plaza East Renovation - Progress Photos



Large Venue structural demolition is substantially complete. Existing truss has been demolished.

1 Pace Plaza East Renovation - Progress Photos



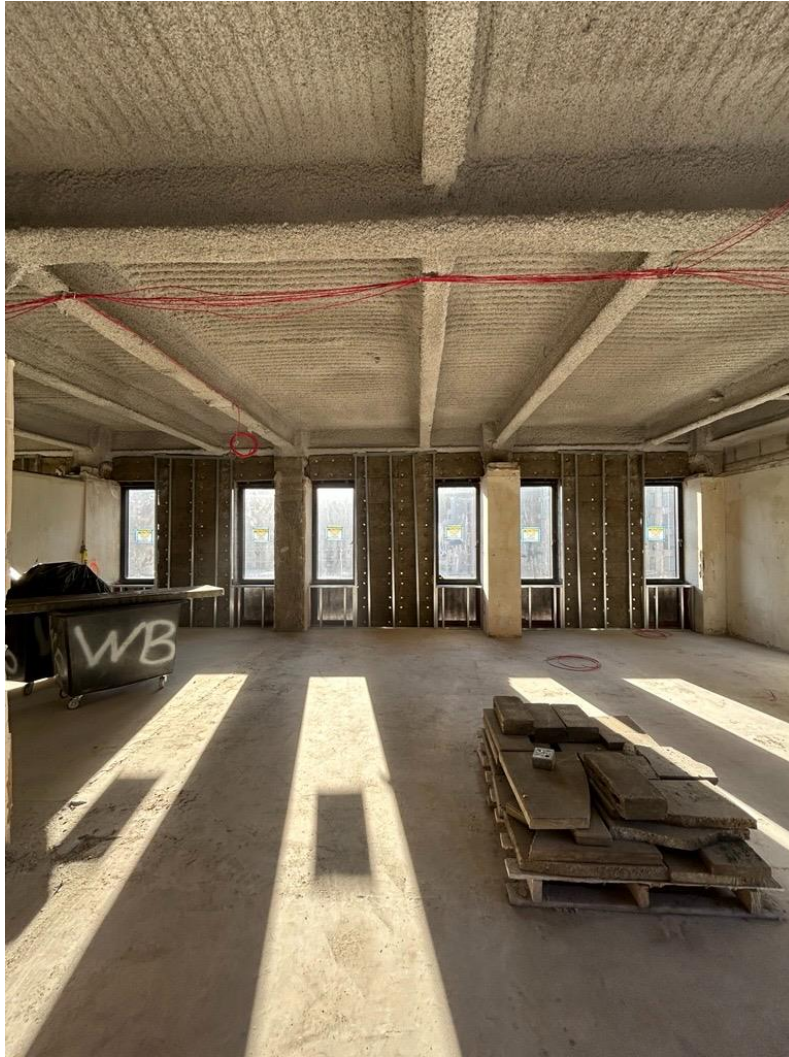
View of Small Venue from 1st Floor.

1 Pace Plaza East Renovation - Progress Photos



Framing, insulation and sheetrock installation on the 3rd Floor in the Podium.

1 Pace Plaza East Renovation - Progress Photos



18th Floor insulation installation is ongoing.



Maria's Tower bathroom framing and pipe installation.