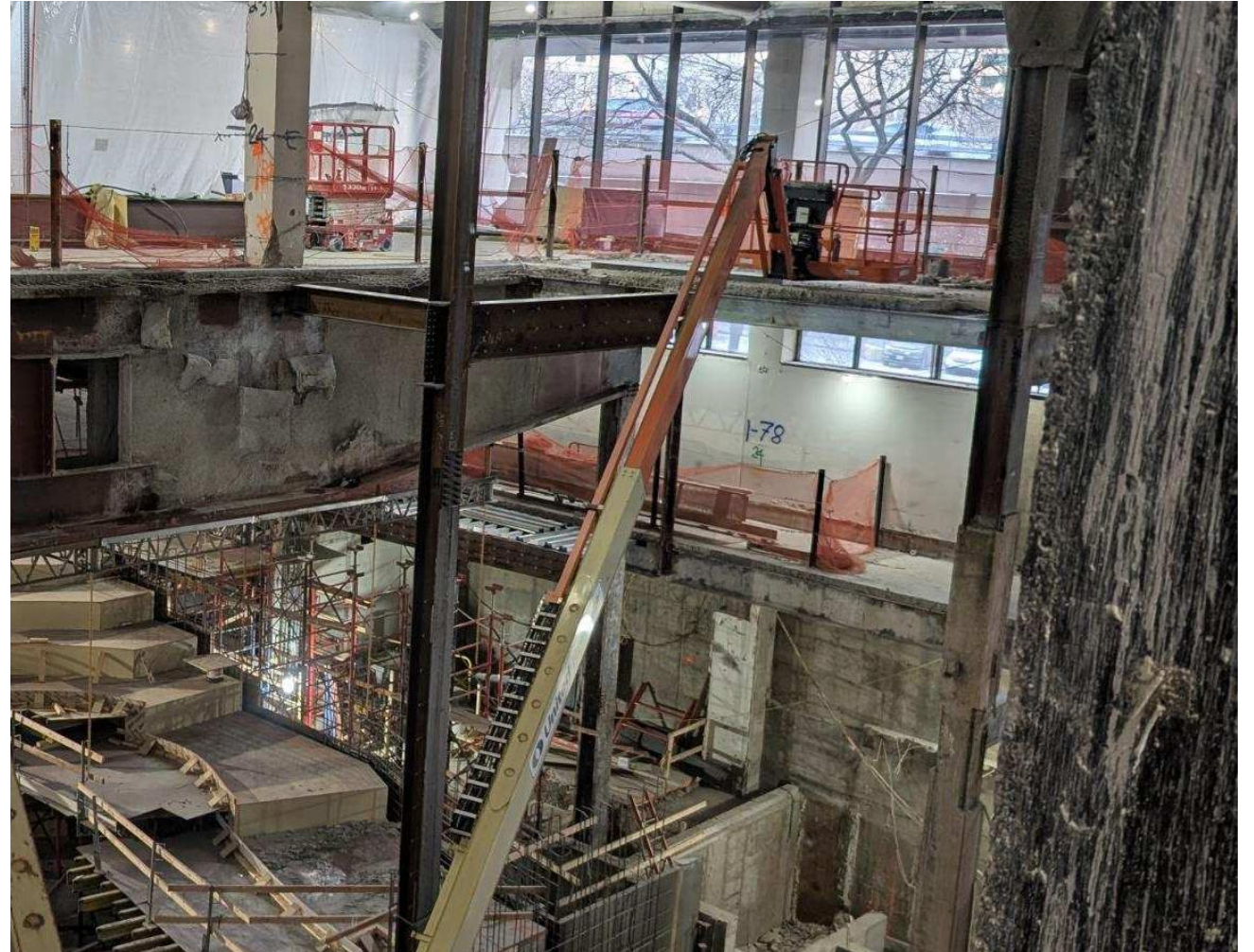
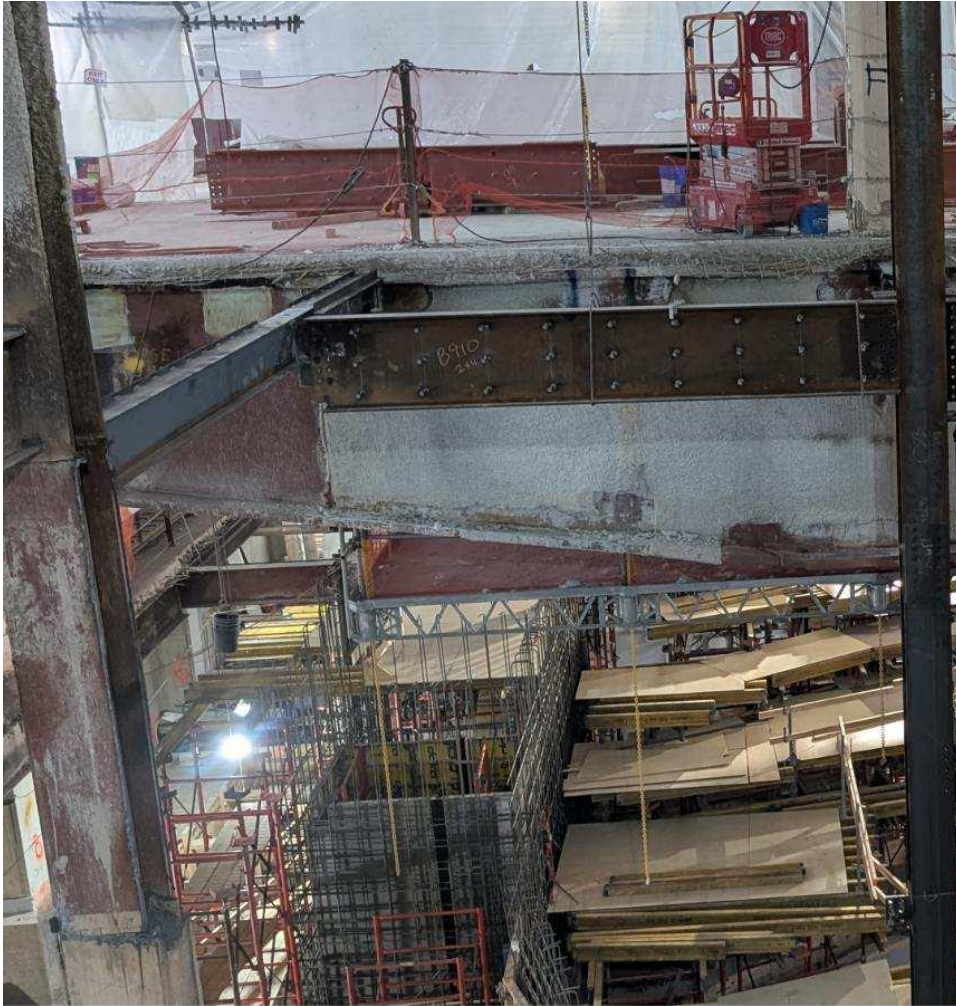


# 1 Pace Plaza East Renovation - Progress Photos



Ongoing structural work in Schimmel Theater, steel and columns are being installed.

# 1 Pace Plaza East Renovation - Progress Photos



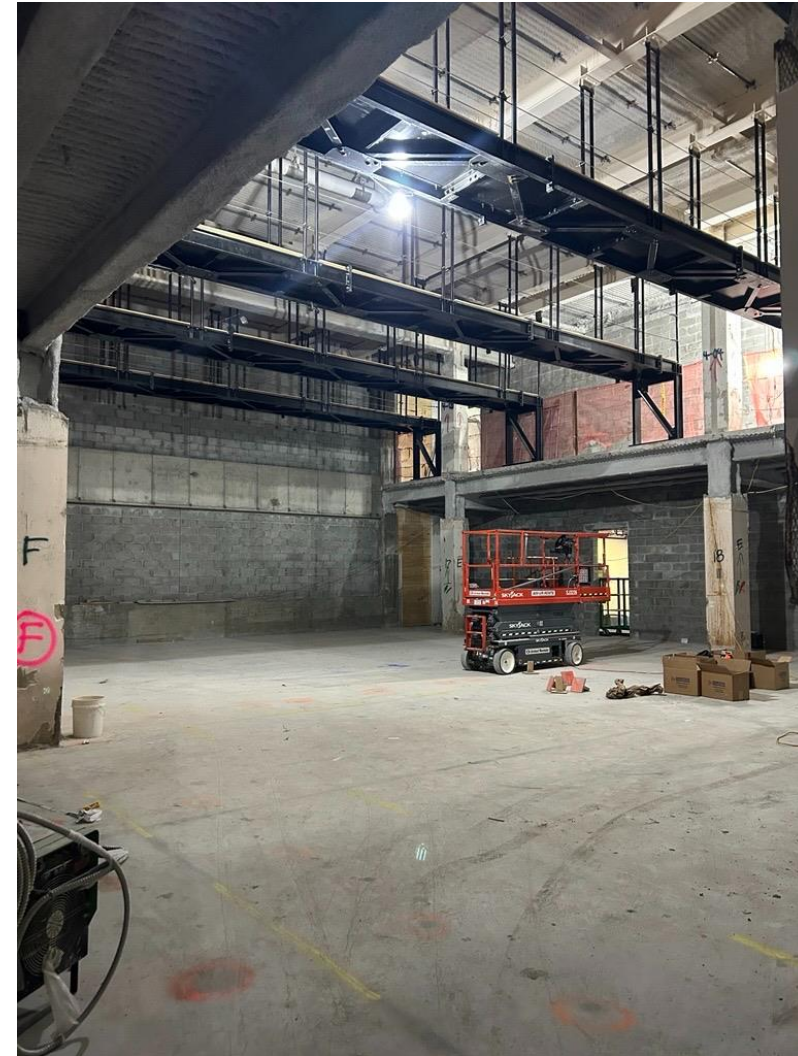
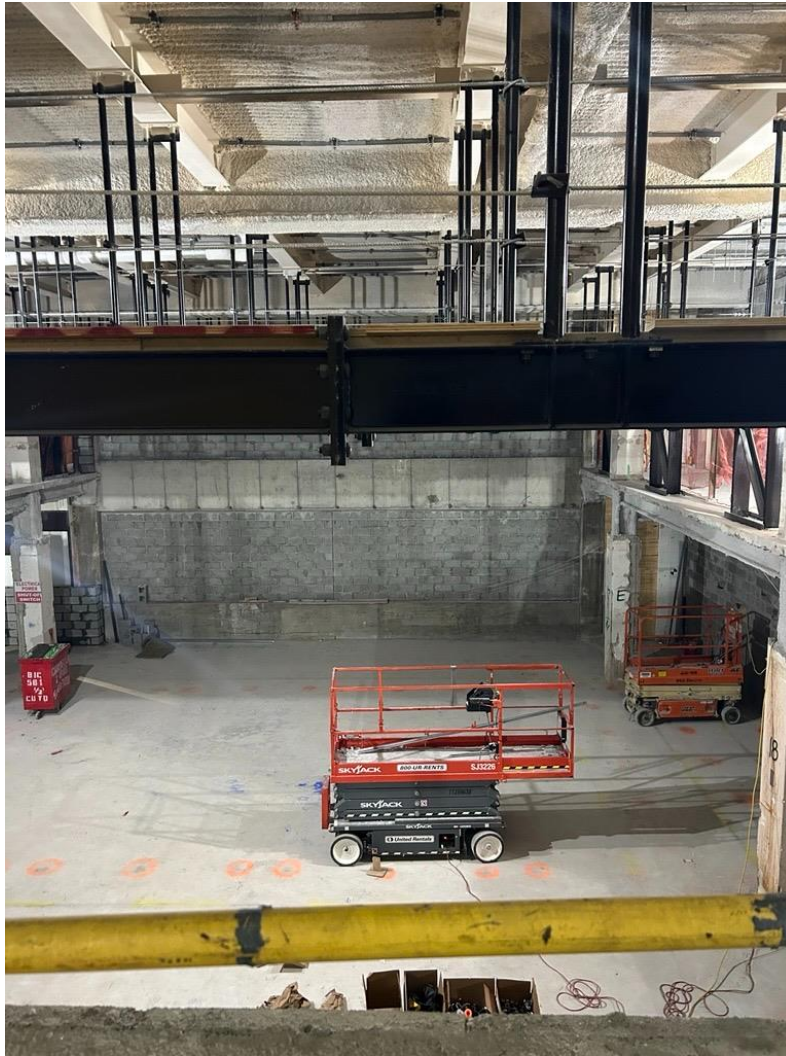
Large Venue audience concrete scope scaffolding and structural formwork installation.

# 1 Pace Plaza East Renovation - Progress Photos



Installation of ductwork in the double-height dance rehearsal studio.

# 1 Pace Plaza East Renovation - Progress Photos



View of the enclosed Medium Venue and installed catwalks.

# 1 Pace Plaza East Renovation - Progress Photos



Overhead MEP installation on going on 1<sup>st</sup>, 2<sup>nd</sup> and 3<sup>rd</sup> floors.



New freight elevator structural work has begun.