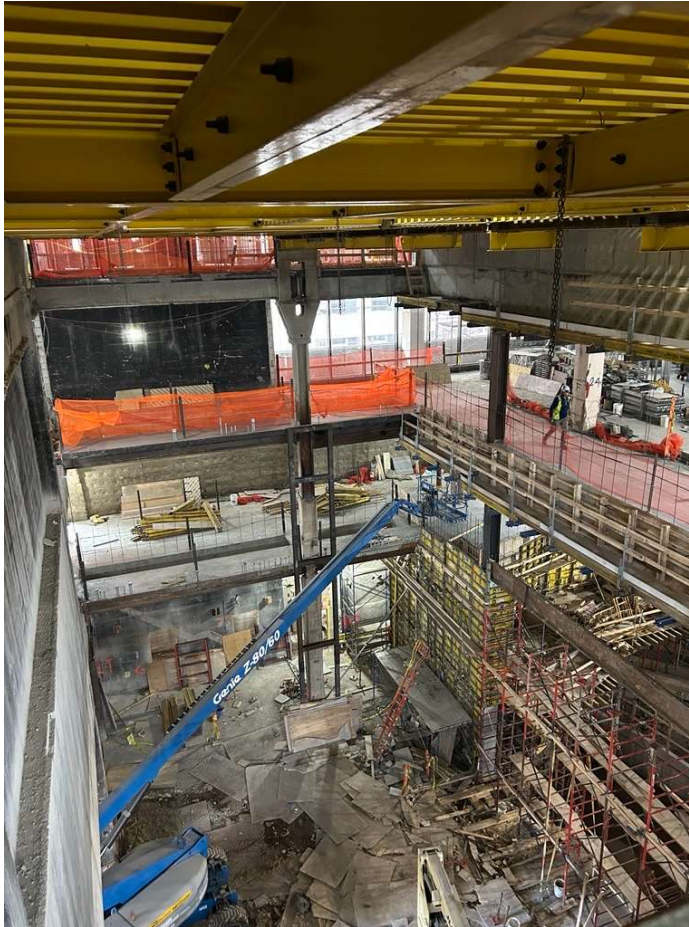
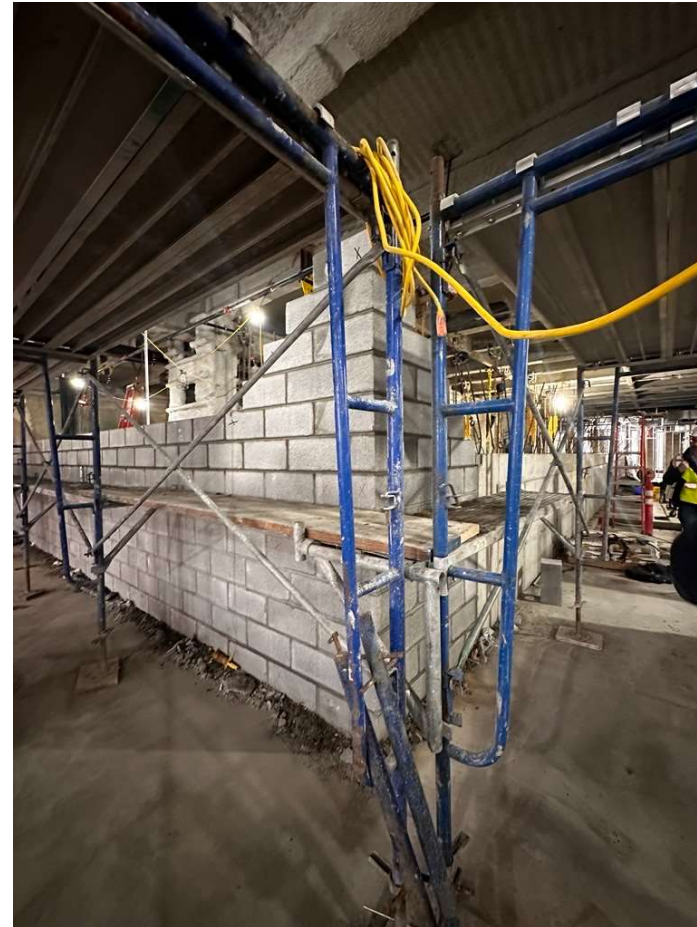


1 Pace Plaza East Renovation - Progress Photos



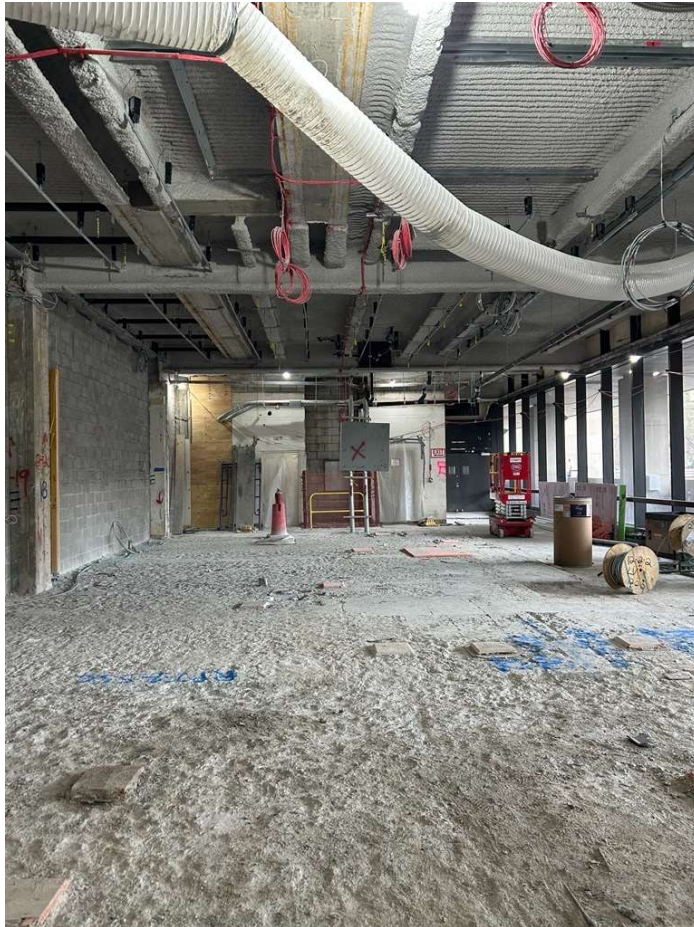
Schimmel Theater Fly Tower Grid Iron.

1 Pace Plaza East Renovation - Progress Photos

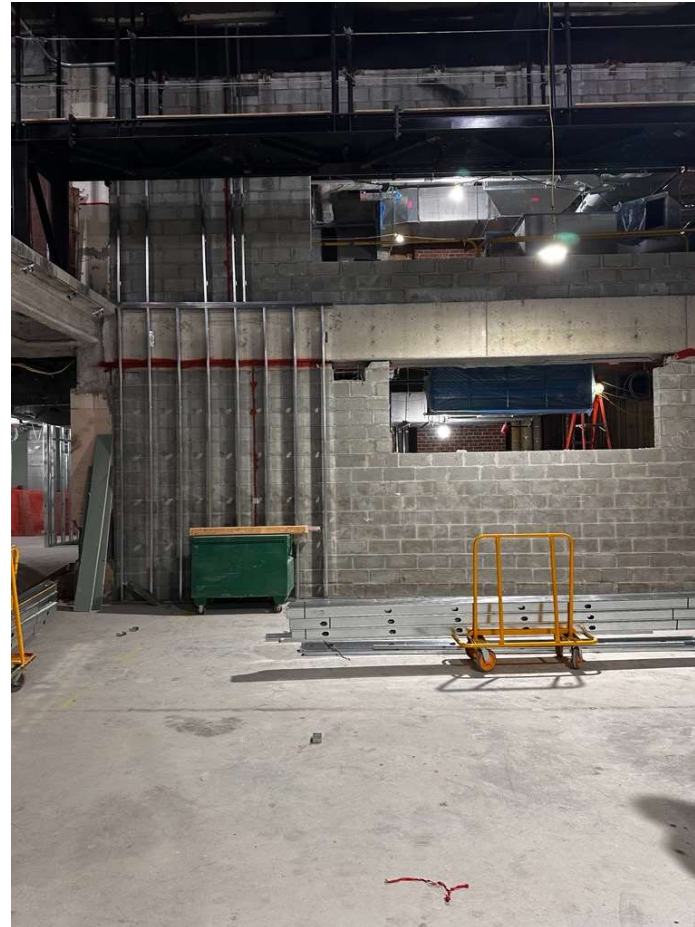


CMU installation at 2nd Floor Large Venue.

1 Pace Plaza East Renovation - Progress Photos



1st Floor demolition of existing terrazzo for new concrete slab.



2nd Floor electrical conduit & carpentry work in Medium Venue

1 Pace Plaza East Renovation - Progress Photos



Maria's Tower Bathroom



Maria's Tower Dorm Room Mock-up