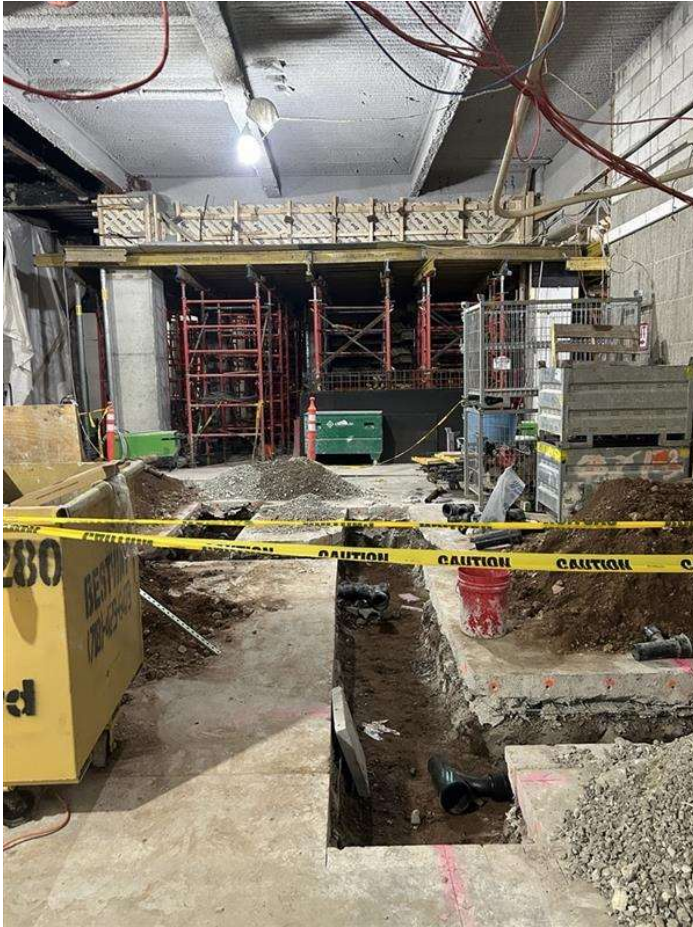


## 1 Pace Plaza East Renovation - Progress Photos



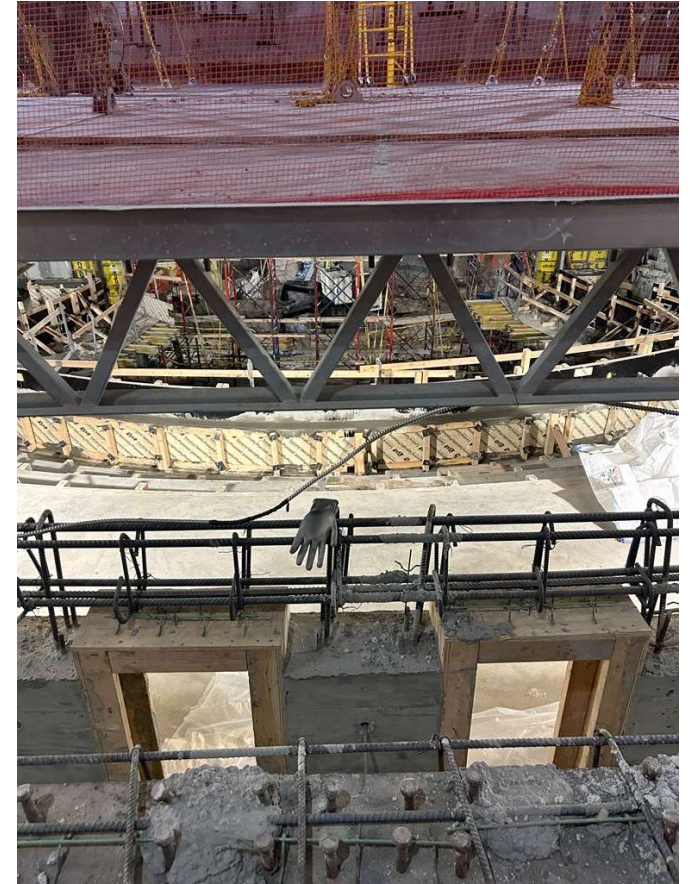
Cellar underground plumbing system installation.



Cellar Water Source Heat Pump Installation



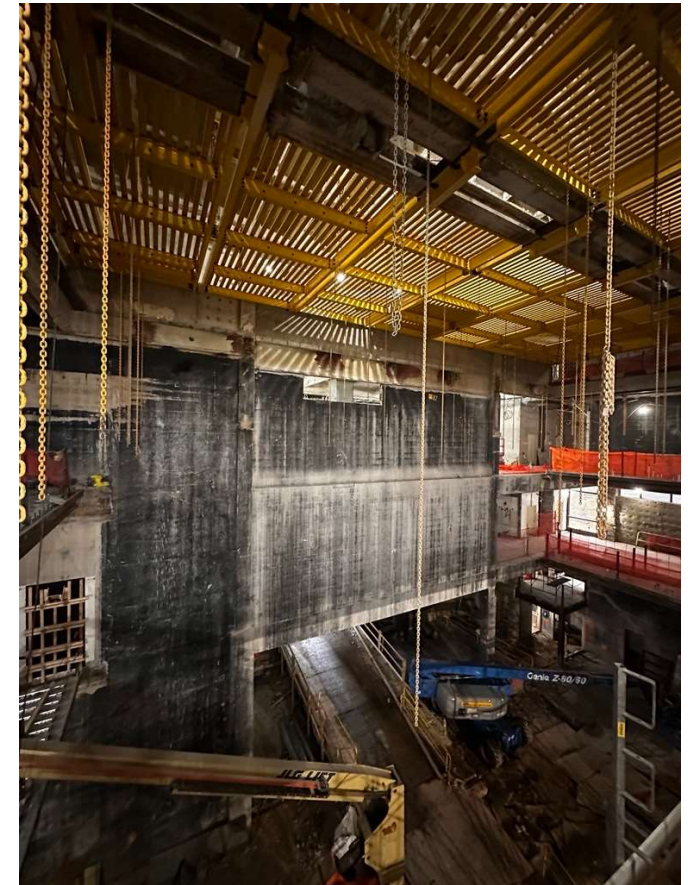
## 1 Pace Plaza East Renovation - Progress Photos



Schimmel Theatre concrete and masonry work continues.



## 1 Pace Plaza East Renovation - Progress Photos

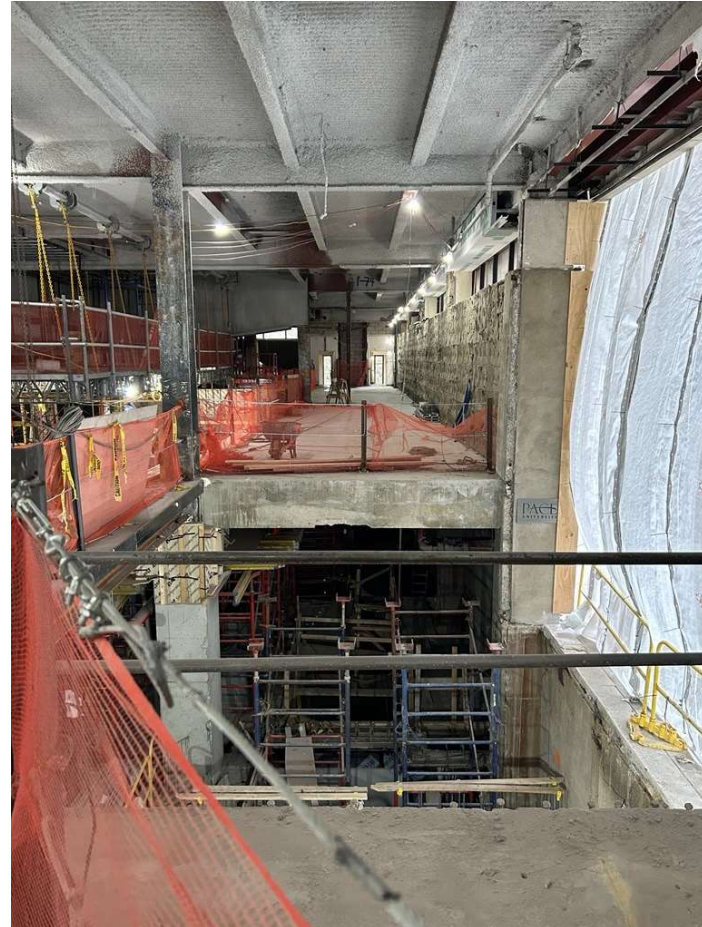


View of the Schimmel Theatre stagehouse gridiron.

## 1 Pace Plaza East Renovation - Progress Photos



New freight elevator shaft steel installation.



Future home of the Spruce Street Spot Stair.



## 1 Pace Plaza East Renovation - Progress Photos



Small and Medium Venue conduit and hanger installation continues.