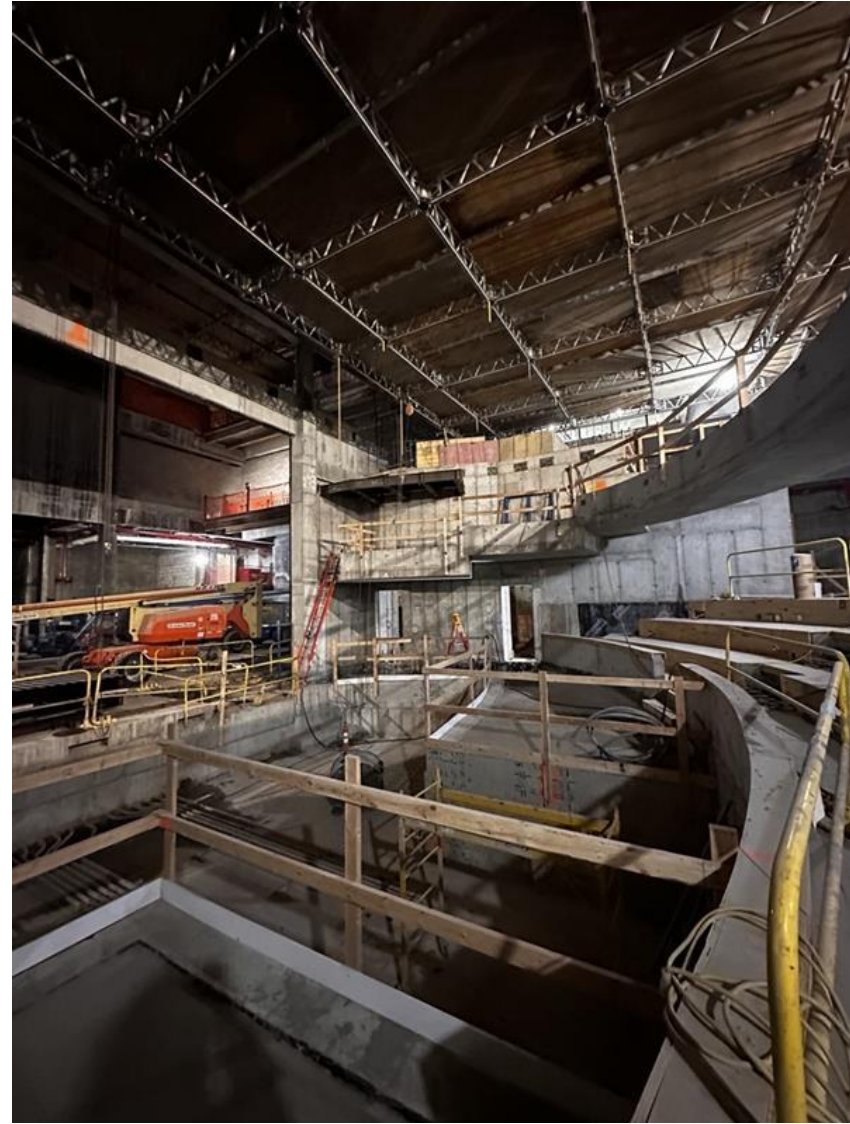


# 1 Pace Plaza East Renovation - Progress Photos



Ongoing concrete formwork and structural steel in the Schimmel Theatre.



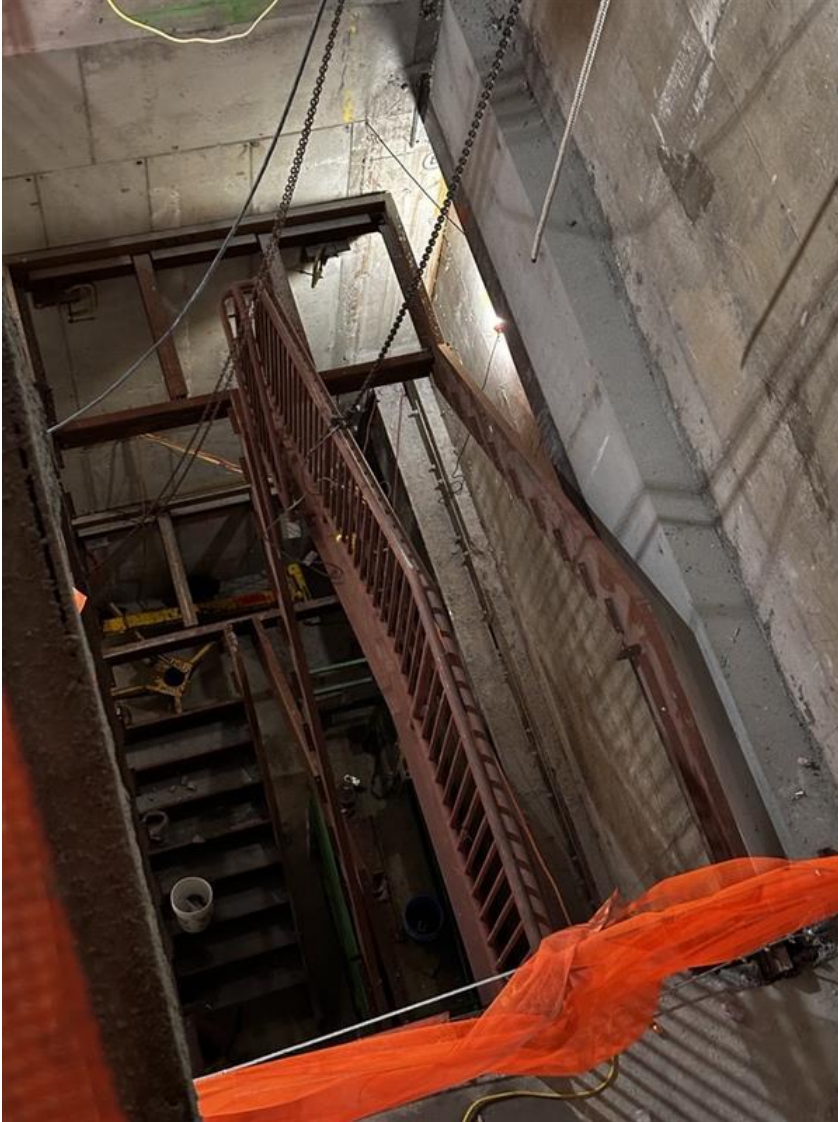
## 1 Pace Plaza East Renovation - Progress Photos



Ongoing structural work in the Schimmel Theatre.



## 1 Pace Plaza East Renovation - Progress Photos



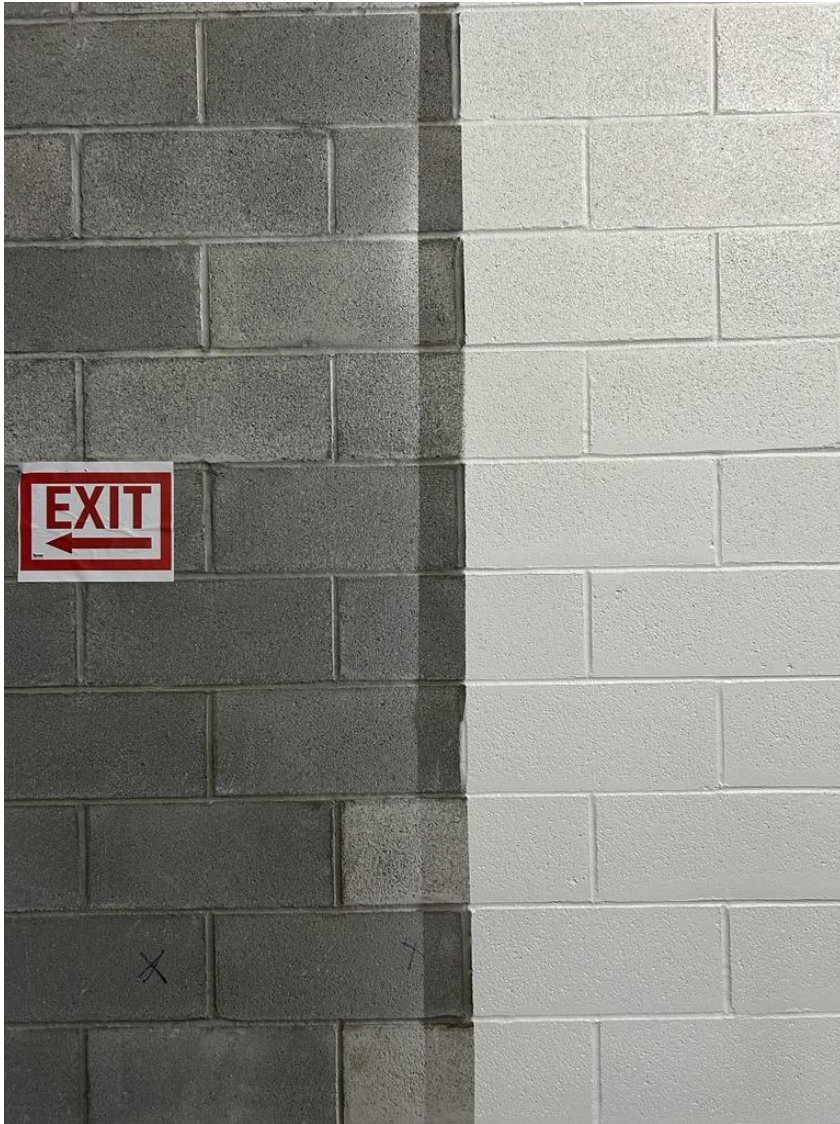
Installation of new Stair J.



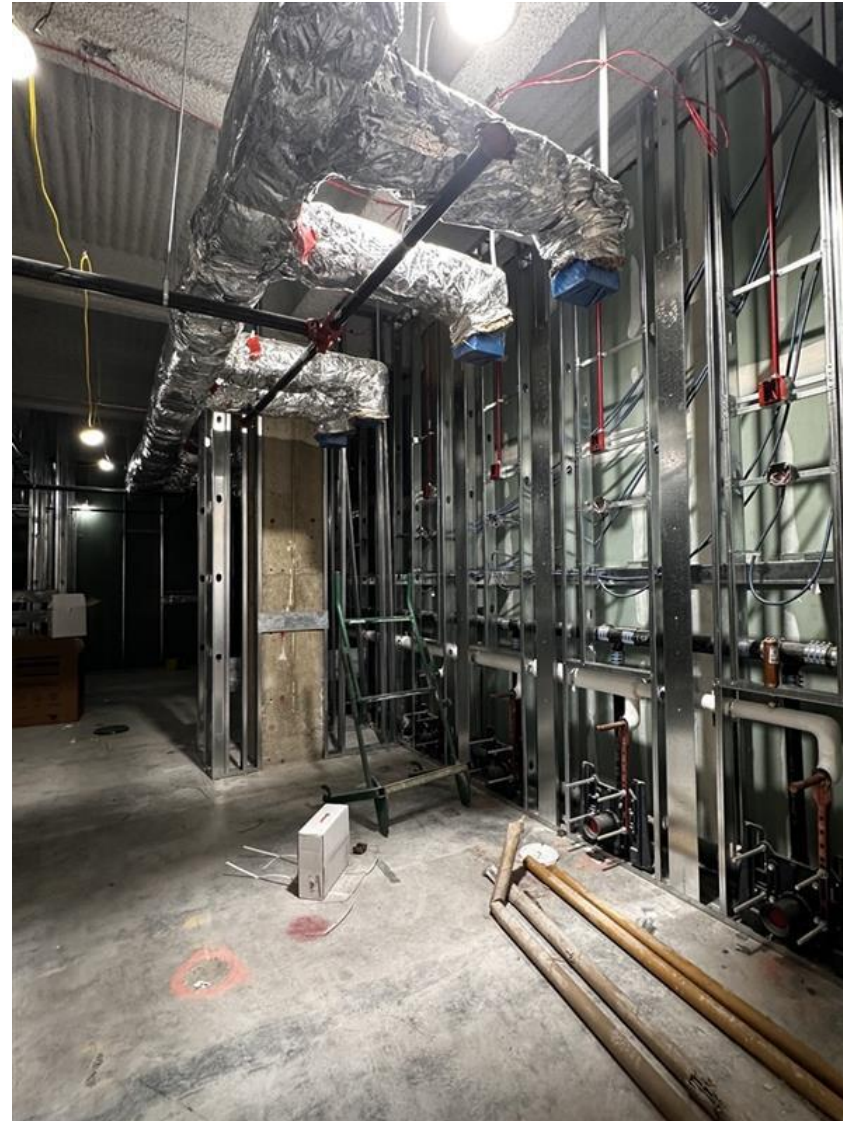
Rebar installation prior to concrete pour for the new feature stair.



## 1 Pace Plaza East Renovation - Progress Photos



Review of finishes and new CMU installation is ongoing.



Installation of new MEPs for new bathrooms.



## 1 Pace Plaza East Renovation - Progress Photos



Exterior work at the new courtyard façade is ongoing.