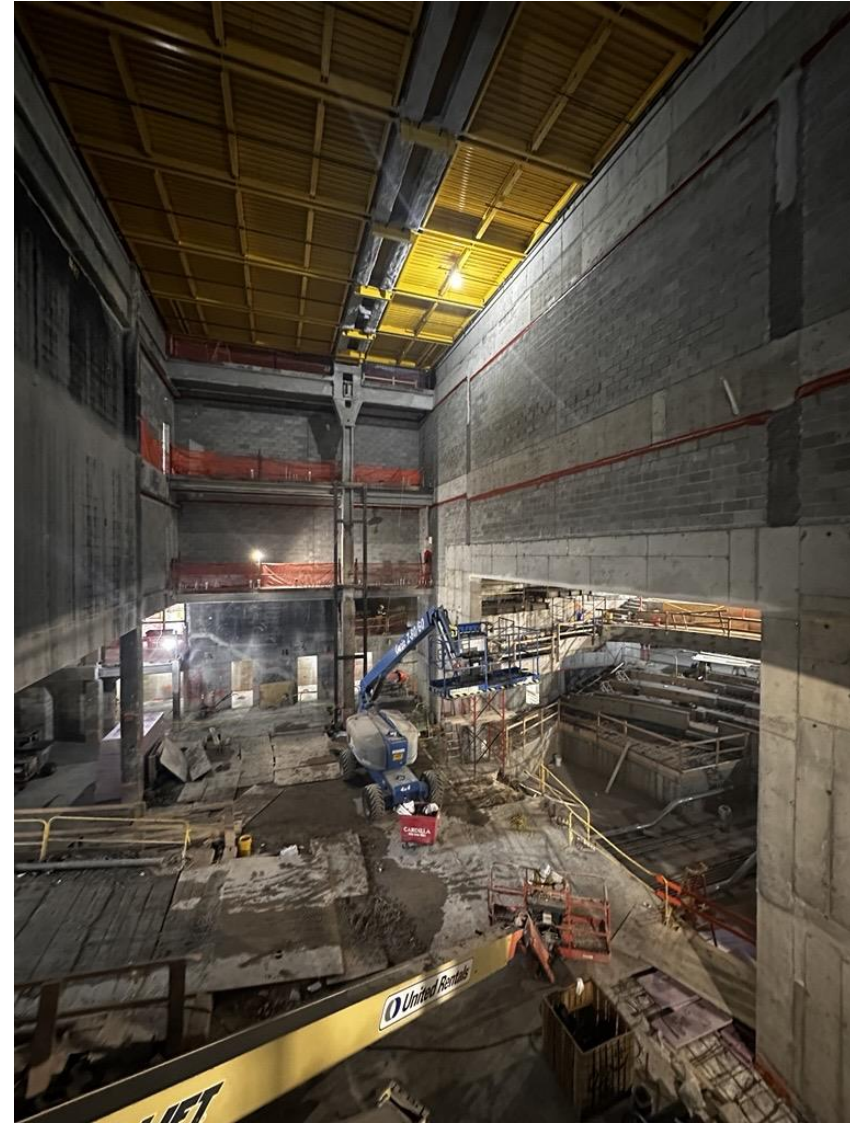


1 Pace Plaza East Renovation - Progress Photos



Installation of new feature stair “The Stoop” along the Spruce St façade is ongoing.

1 Pace Plaza East Renovation - Progress Photos



Concrete formwork and CMU installation continues in the Schimmel Theatre.

1 Pace Plaza East Renovation - Progress Photos



Installation of classroom gypsum walls and other interior trades

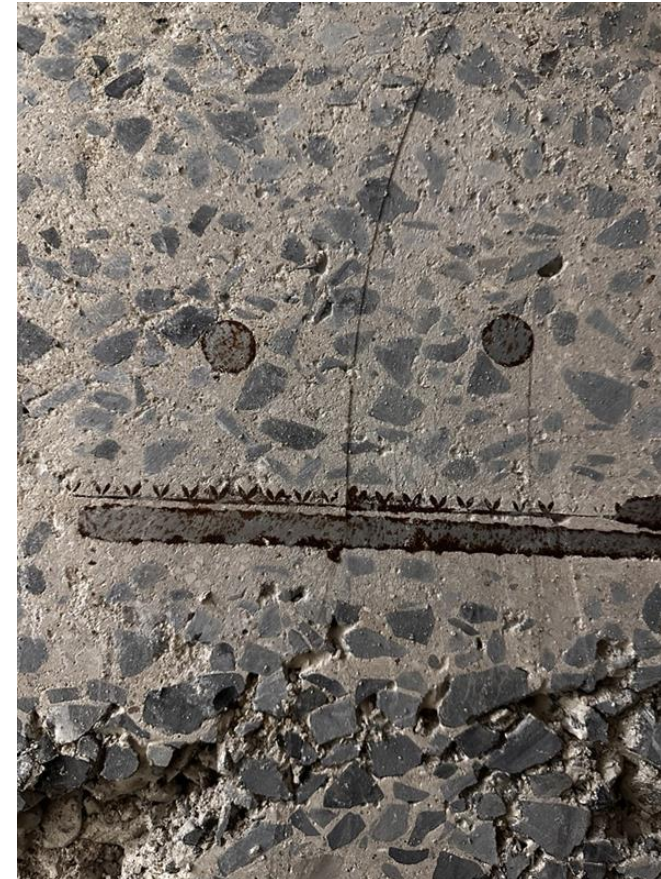


Installation of new concrete pads for new mechanical units.

1 Pace Plaza East Renovation - Progress Photos



Installation of Maria's Tower dorm room gypsum walls



Existing faces of 1 Pace Plaza