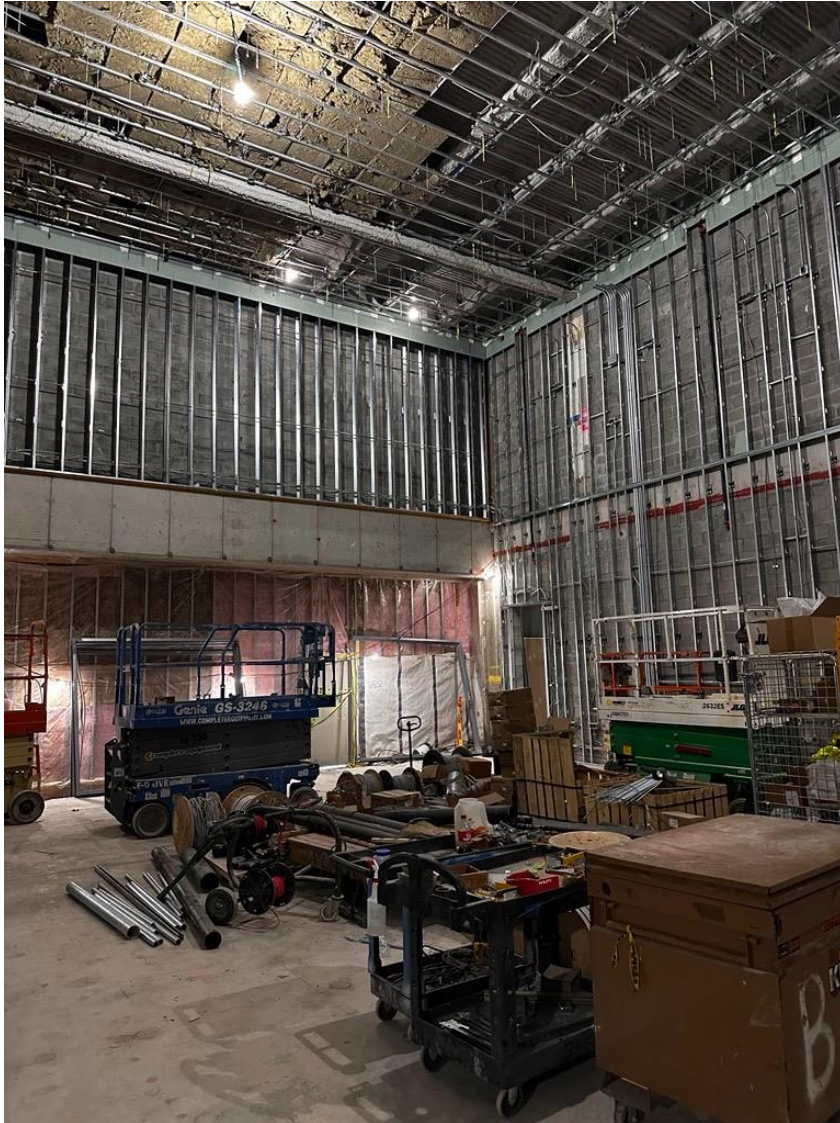


1 Pace Plaza East Renovation - Progress Photos

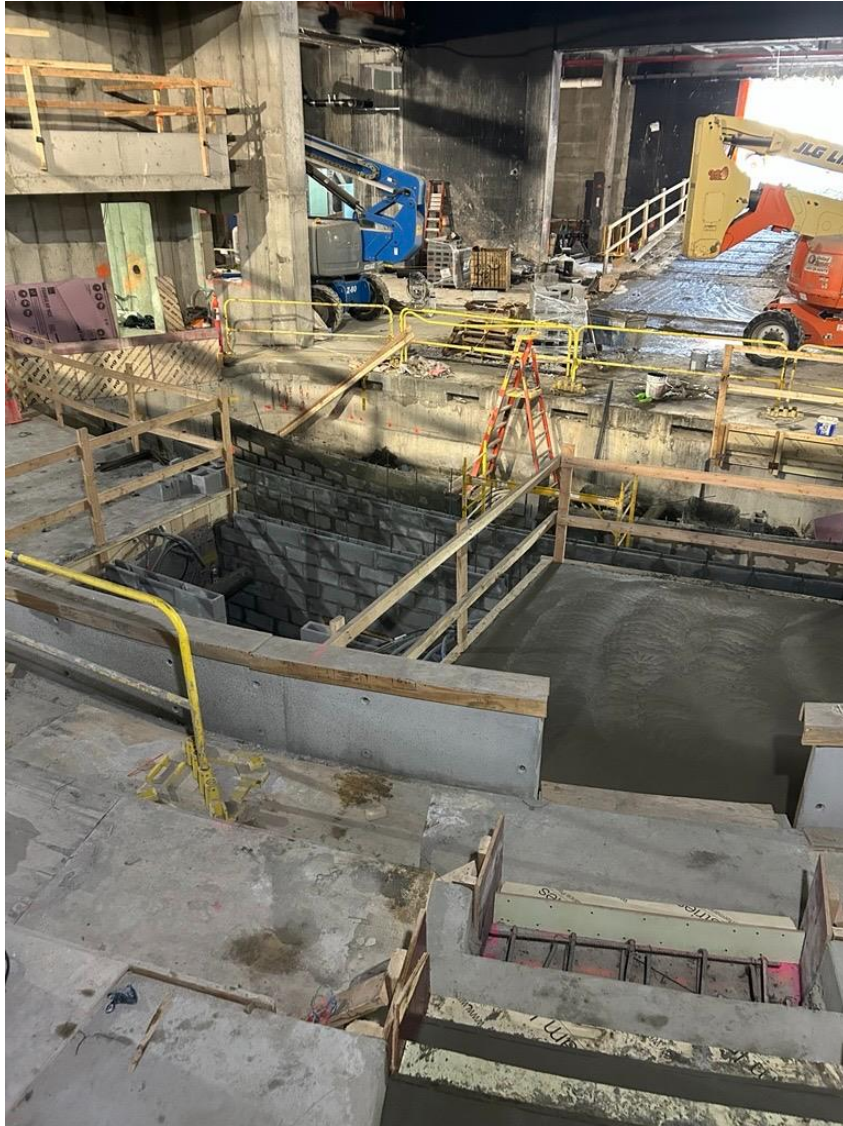


Installation of Small Venue gypsum walls and other interior trades



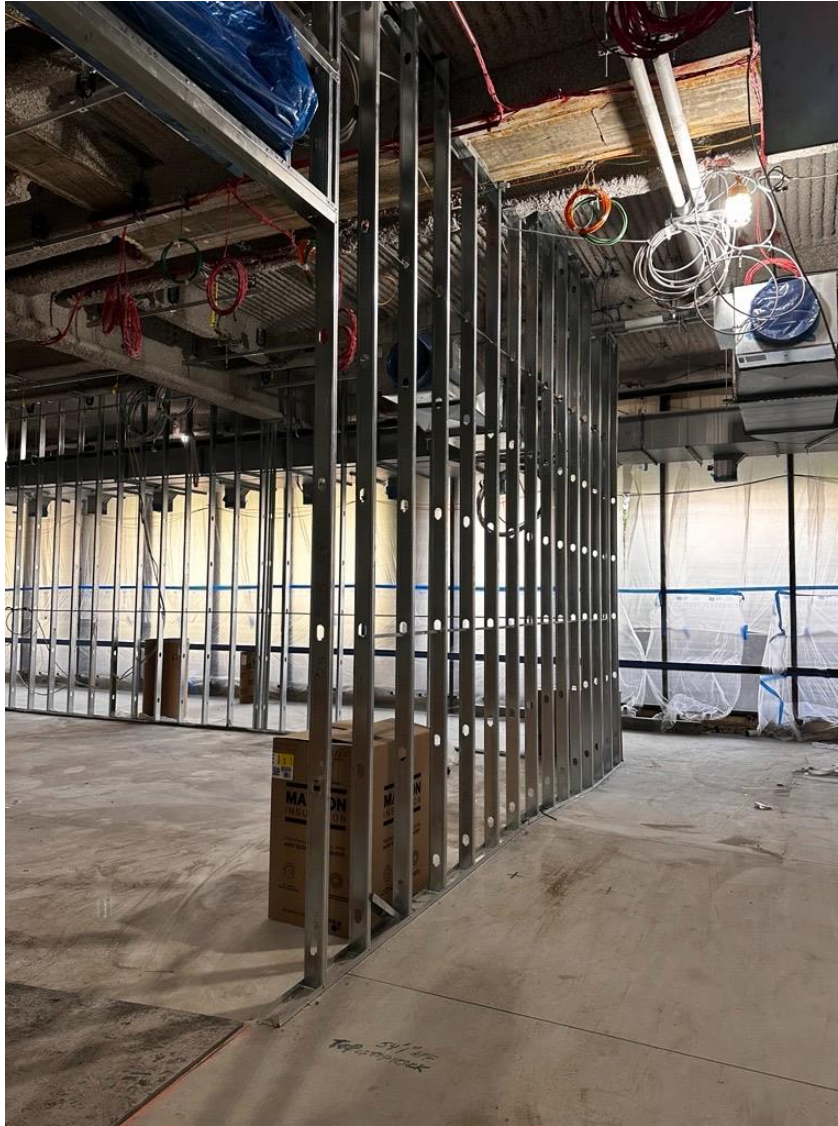
Installation of Schimmel Theatre Catwalk continues

1 Pace Plaza East Renovation - Progress Photos



Concrete formwork, CMU installation and painting continues in the Schimmel Theatre

1 Pace Plaza East Renovation - Progress Photos

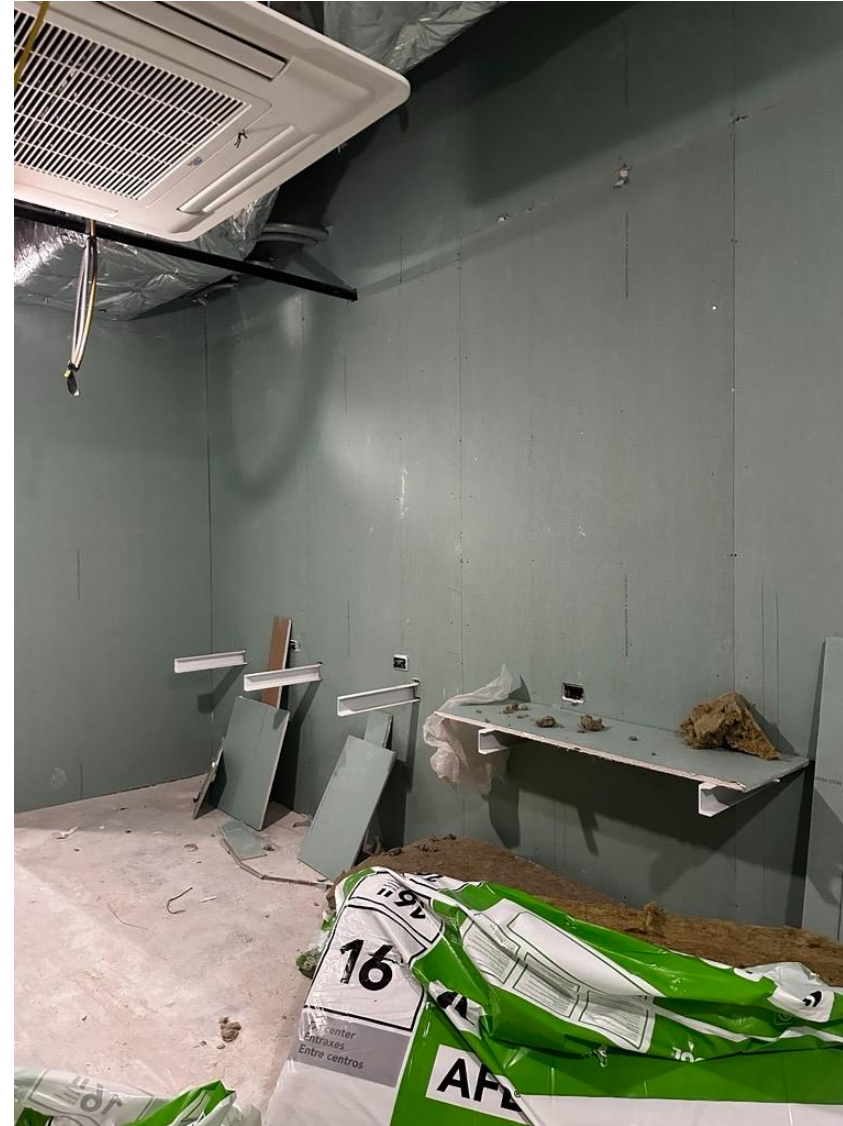


1st Floor concrete leveling continues



Firestopping on the 2nd Floor

1 Pace Plaza East Renovation - Progress Photos



Installation of bathroom and dressing room gypsum walls and other interior trades continues

1 Pace Plaza East Renovation - Progress Photos



Mechanical, plumbing, electrical and low voltage work continues in Podium corridors



More existing faces of 1 Pace Plaza