



**PACE**  
UNIVERSITY

New York City / Westchester

**WHERE  
EDUCATION  
MEETS  
OPPORTUNITY**



# EXPERIENCE MORE.

PACE UNIVERSITY IS ALL ABOUT GETTING YOU WHERE YOU WANT TO GO. Small classes. Personal mentorship. Powerful academic support. A real-world, future-forward curriculum. And every opportunity to learn by doing—because experience matters.

You're going to expand your horizons beyond the classroom. You're going to be challenged. And we're going to help you succeed.

We're a community of people who go further and we want you to join us.

**TOP 10%**  
of US colleges that  
provide the best return  
on tuition investment

—PayScale.com



**100+**  
majors, minors, and  
combined degree programs



**TOP 20**  
for diversity and inclusivity  
—Equal Opportunity Magazine

---

## SEVEN SCHOOLS AND COLLEGES

College of Health Professions

Dyson College of Arts and Sciences

Elisabeth Haub School of Law

Lubin School of Business

Sands College of Performing Arts

School of Education

Seidenberg School of Computer  
Science and Information Systems



# MAJORS LIST 2025–2026

	Westchester NYC	
Accounting	•	•
Accounting, Public (combined degree and CPA Prep)	•	•
MBA in Public Accounting	•	•
MS in Financial Management	•	•
MS in Taxation	•	•
Accounting, Public (five-year program and CPA Prep)	•	•
Applied Psychology and Human Relations	•	•
Art	•	
Art History	•	
Behavioral Neuroscience	•	
Biochemistry	•	
Biological Psychology		•
Biology	•	•
Biology Pre-Professional		
Optometry	•	•
Pharmacy	•	•
Podiatry	•	•
Business Analytics	•	
Business Economics	•	•
Business Technology	•	•
Chemical Biology		•
Chemistry	•	•
Cinema and Filmmaking, Digital		•
Communication and Media Studies	•	
Communications		•
Computational Economics	•	•
Computer Engineering	•	•
Computer Science	•	•
Criminal Justice	•	•
Cybersecurity	•	•
Economics	•	•
Education		
Adolescent Education		
Biology	•	•
Chemistry	•	•
English	•	•
History/Social Studies	•	•
Mathematics	•	•
Spanish	•	•
Childhood Education	•	•
Early Childhood Education	•	•
Early Childhood/Childhood Education	•	•
English Language and Literature	•	
English, Writing, and Rhetoric		•
Environmental Science	•	•
Environmental Studies	•	•
Film and Screen Studies	•	
Finance	•	•
Forensic Science	•	

	Westchester NYC	
Game Development	•	•
General Business*	•	•
Global Asia Studies	•	
Health Science	•	•
History	•	•
Information Systems	•	•
Information Technology	•	•
International Management	•	
International Relations and Global Studies	•	•
Journalism, Digital		•
Language, Culture, and World Trade	•	
Latin American Studies	•	
Latina/o Studies	•	
Liberal Studies*	•	•
Management	•	•
Arts and Entertainment Management	•	
Business Management	•	•
Entrepreneurship	•	
Hospitality and Tourism Management	•	
Human Resources Management	•	
Marketing	•	•
Advertising and Integrated Marketing Communications	•	
Digital Marketing	•	
Global Marketing Management	•	
Sports Marketing	•	•
Mathematics	•	•
Modern Languages and Cultures	•	
Nursing (four-year program)		•
Peace and Justice Studies	•	
Performing Arts †		
Acting	•	
Acting for Film and Media	•	
Commercial Dance	•	
Musical Theater	•	
Performance Making	•	
Production and Design for Stage and Screen	•	
Stage Management	•	
Personality and Social Psychology		•
Pharmaceutical Sciences		•
Philosophy and Religious Studies	•	•
Political Science	•	•
Psychology	•	•
Public Relations		•
Sociology–Anthropology	•	
Spanish	•	
Women's and Gender Studies	•	
Writing for Diversity and Equity in Theater and Media	•	

\* For transfer students only  
† Audition or interview required

As of July 2025

[Learn more about these programs](#)

# 40+ COMBINED AND SEQUENTIAL DEGREES (FIVE- AND SIX-YEAR PROGRAMS)

Earn both a bachelor’s and a graduate degree in a shortened time frame.

[Find your Program](#)

## PFORZHEIMER HONORS COLLEGE

Exclusive benefits include innovative courses, early registration, mentoring, events, research and study abroad grants, top-tier annual scholarship, and more. Students are reviewed during admission—no separate application is required.

[Visit Honors Website](#)

## STUDY ABROAD

Whether you want to spend a semester at one of our global partner schools or take a weeklong faculty-led travel course, Pace provides the support and affordable programs to get you there.

[Visit the Study Abroad Website](#)





# NEW YORK CITY CAMPUS



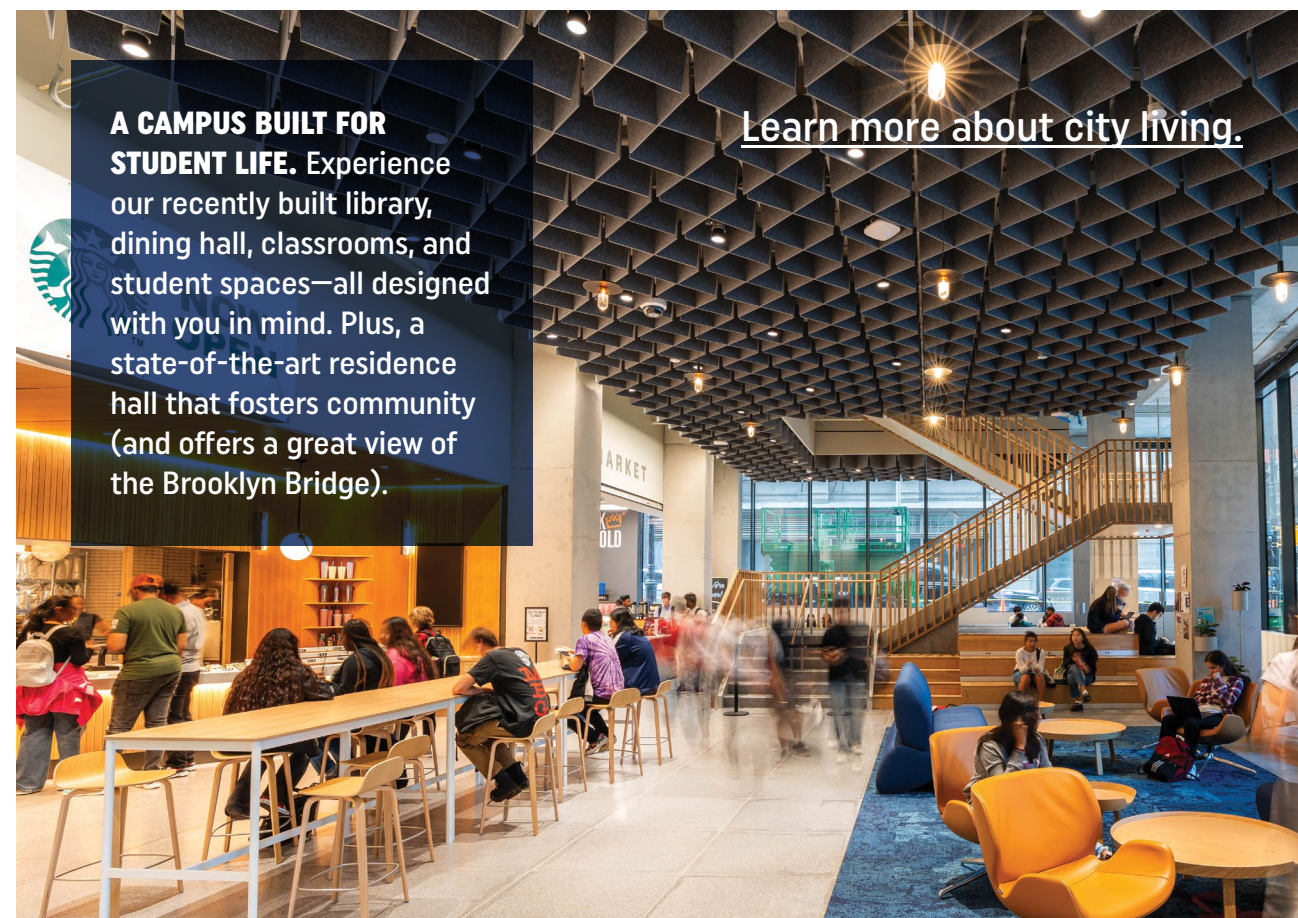
**THE CITY IS YOUR CLASSROOM.** At Pace, learning extends beyond the classroom walls. With dedicated professors and the Big Apple as your backdrop, you can achieve anything. Explore finance at the stock exchange, engage in diplomacy at the UN, participate in hackathons at Google. The opportunities are endless.

**THE CITY IS YOUR CAMPUS.** The iconic skyline right outside your window and the hustle and bustle on the streets below. That's your campus. From Chinatown to Central Park, you could spend the next four years exploring NYC and never have the same experience twice.



**COMING FALL 2026:**  
A reimagined One Pace Plaza East is on the way—featuring contemporary classrooms, creative arts and collaboration spaces, a state-of-the-art performing arts center, and a brand-new residence hall.

[Learn more about the transformation](#)



**A CAMPUS BUILT FOR STUDENT LIFE.** Experience our recently built library, dining hall, classrooms, and student spaces—all designed with you in mind. Plus, a state-of-the-art residence hall that fosters community (and offers a great view of the Brooklyn Bridge).

[Learn more about city living.](#)



# WESTCHESTER CAMPUS

**VIBRANT CAMPUS LIFE.** If you're looking for a close-knit community and an active campus with NCAA Division II Northeast-10 sports teams and 60+ student clubs and organizations including Greek life, you've come to the right Pace campus.

[Learn more about our suburban campus.](#)



**STATE-OF-THE-ART CAMPUS.** We've invested significantly in our 200-acre campus to build ultramodern academic, research, residential, and athletic facilities, as well as a renovated and expanded student center. You'll love where you live, learn, study, eat, and play.



**OPPORTUNITY IS CLOSE BY.** Internship possibilities abound, with Fortune 500 companies such as IBM, NBC Sports, and MasterCard operating alongside emerging start-ups.



HUGO BOSS

# PACE GETS JOBS

## STUDENTS COME TO PACE TO REACH THEIR FULLEST POTENTIAL.

Career Services is here to help. We've got the tools, employer relationships, and in-house career experts you'll need to get you the job or internship you've dreamed of.

## WHO HIRES PACE STUDENTS?

Amazon	KPMG
Barclays	Live Nation Entertainment
Bayer	Madison Square Garden Entertainment
Bloomberg	Memorial Sloan Kettering Cancer Center
Danone North America	Meta
Deloitte	NBCUniversal
Discover Financial Services	NewYork-Presbyterian
EY	Pfizer
FBI	Salesforce
FEMA	UBS
JPMorgan Chase & Co.	

Learn more about  
Career Services at Pace



9,000+

internships, co-ops, practicums,  
field experiences, and clinicals  
completed by students last year

95%

graduates from the Class of 2024  
are employed, continuing their  
education, or pursuing service

\$75,098

average salary for Class of 2024  
bachelor's graduates



**"INTERNSHIPS ARE INCREDIBLY  
IMPORTANT** in understanding corporate  
experiences beyond higher education  
and academia. This experience has  
given me exposure that I can leverage  
for my career."

— **GEORGE DAVIS**  
Finance Intern  
AMC Networks



# STUDENT LIFE 101

**GRAB YOUR NEW FRIENDS AND LET'S GO.** From Broadway shows, to Yankees games, self-care days around exam season, movie nights, hiking trips, concerts (in recent years we've had Lola Brooke, 41, and Maggie Lindemann), speaker events—you name it, and we do it.

**10**  
residence halls

**3,700+**  
students live on campus

**68%**  
of all first-year students  
live on campus

**LIVING ON CAMPUS.** Choose from diverse housing options, themed floors, and tailored programming in NYC or Westchester. Singles, doubles, triples, and townhouses—get a taste of the “suite” life by visiting the [housing website](#).



**1,600+**  
events per  
semester

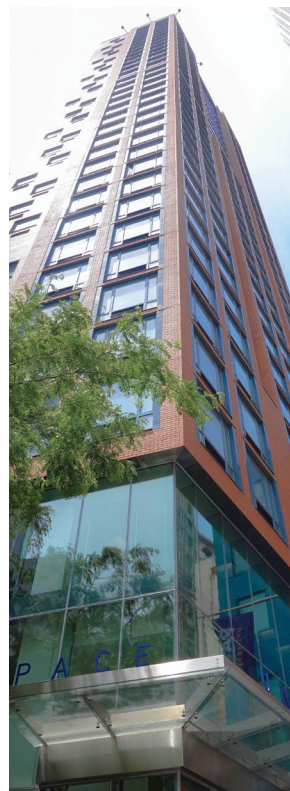


**100+**  
student clubs  
and orgs



**34 stories**

makes 33 Beekman the tallest residence hall  
in the world.



## ATHLETICS

**NCAA Division II Northeast-10**

**MEN'S SPORTS\*:** Baseball, Basketball, Football, Lacrosse, Soccer, Swimming and Diving

**WOMEN'S SPORTS\*:** Basketball, Cross Country, Field Hockey, Lacrosse, Soccer, Softball, Swimming and Diving, Volleyball

**SPIRIT SQUAD\*:** Cheerleading, Dance Team

**ESPORTS:** Varsity, academy, and club opportunities for students in *League of Legends*, *Valorant*, *Super Smash Bros Ultimate*, *Rocket League*, *Overwatch*, and *Fortnite*.

**Interested in joining the team?**

**Fill out the Prospective Athlete Form**

\*Westchester Campus only





# FINANCING YOUR PACE EDUCATION

A PACE EDUCATION IS MORE AFFORDABLE THAN YOU THINK. At Pace, our goal is to offer you as much financial assistance as possible, based upon availability and need. All admitted students are considered for every available option. Financial aid resources include scholarships, grants, on-campus employment, and loans.

## APPLY FOR TUITION ASSISTANCE WITH FAFSA

To be considered for full financial aid, you must complete the [Free Application for Federal Student Aid \(FAFSA\)](#).

### Federal School Codes:

New York City: 002791  
Westchester (Pleasantville): 002792

Get an idea of how affordable Pace really is by using these tools:

**Merit Scholarship Estimator\***  
**Net Price Calculator\***

To get started, visit [Price Calculator website](#)

**PERFORMING ARTS STUDENTS:** Students admitted to the Sands College of Performing Arts will be considered for institutional scholarships through a holistic review process—distinct from that used for other academic programs at Pace. This new model takes into account artistic talent as well as academic achievement and financial need.

\*The federal government requires colleges and universities to post a net price calculator on their websites. No FAFSA required to receive merit award. Pace University reserves the right to change tuition rates.

98%  
of first-year students  
recieve financial aid

\$14,500–  
\$36,000  
range of merit-based  
scholarships

\$32,201  
average amount of  
Pace aid offered to  
all new undergraduate  
students each year

# APPLICATION CHECKLIST

## FIRST-YEAR APPLICANTS

- Application for admission
- Official high school transcripts
- Personal statement/essay
- Two letters of recommendation
- Optional official SAT/ACT score report\*
- For International Applicants: Proof of English Language Proficiency+
- \$50 application fee

## TRANSFER APPLICANTS

- Application for admission
- Official college transcripts
- For International Applicants: Proof of Language Proficiency+

\* [Learn more about test optional policy](#)  
+ [Learn more about English Language Proficiency requirements](#)

# IMPORTANT DATES TO REMEMBER

	Early Decision	Early Action I	Early Action II	Sands College of Performing Arts*	Regular Decision
Application Deadline	11/1	11/15	12/1	12/1	2/15
Admission Decision Notification	11/24	12/1	1/3	Beginning 3/31	Beginning 1/3
Deposit Deadline	2/15	5/1	5/1	5/1	5/1

**February 15**  
Deadline for filing the FAFSA for \$2,000 scholarship

Already applied? Check the [status of your application](#)

Apply today.

\* For application and audition requirements, visit [Performing Arts Website](#).  
Note: For spring admission deadlines, visit [Key Dates and Deadlines website](#).

**For Parents and Families:** Sign up today for [Pace University's Parents and Families platform](#) to get the information you need to support your student, including deadlines and campus news.





## Office of Undergraduate Admission

[undergradadmission@pace.edu](mailto:undergradadmission@pace.edu)

### NEW YORK CITY CAMPUS

One Pace Plaza  
New York, NY 10038  
(212) 346-1323

### WESTCHESTER CAMPUS

861 Bedford Road  
Pleasantville, NY 10570  
(914) 773-3746

# PACE UNIVERSITY

[Plan your visit today.](#)



[Follow Pace University on Instagram](#)

[Follow Pace University on TikTok](#)

#PaceBound