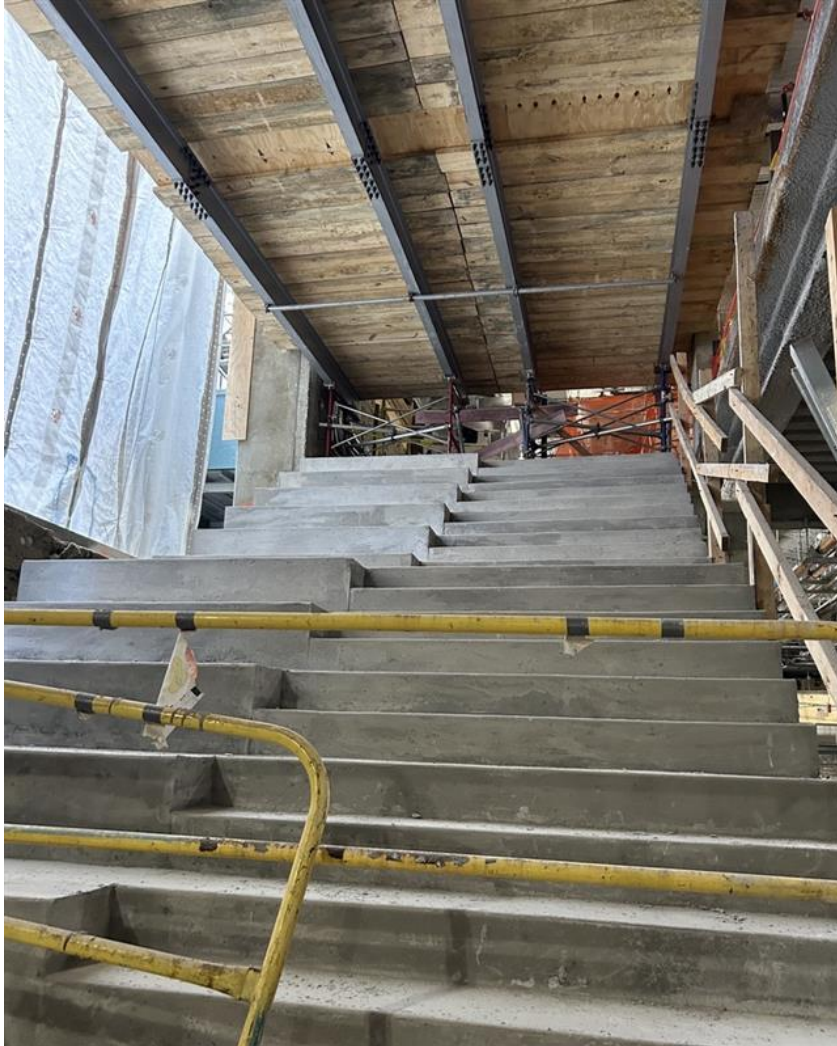
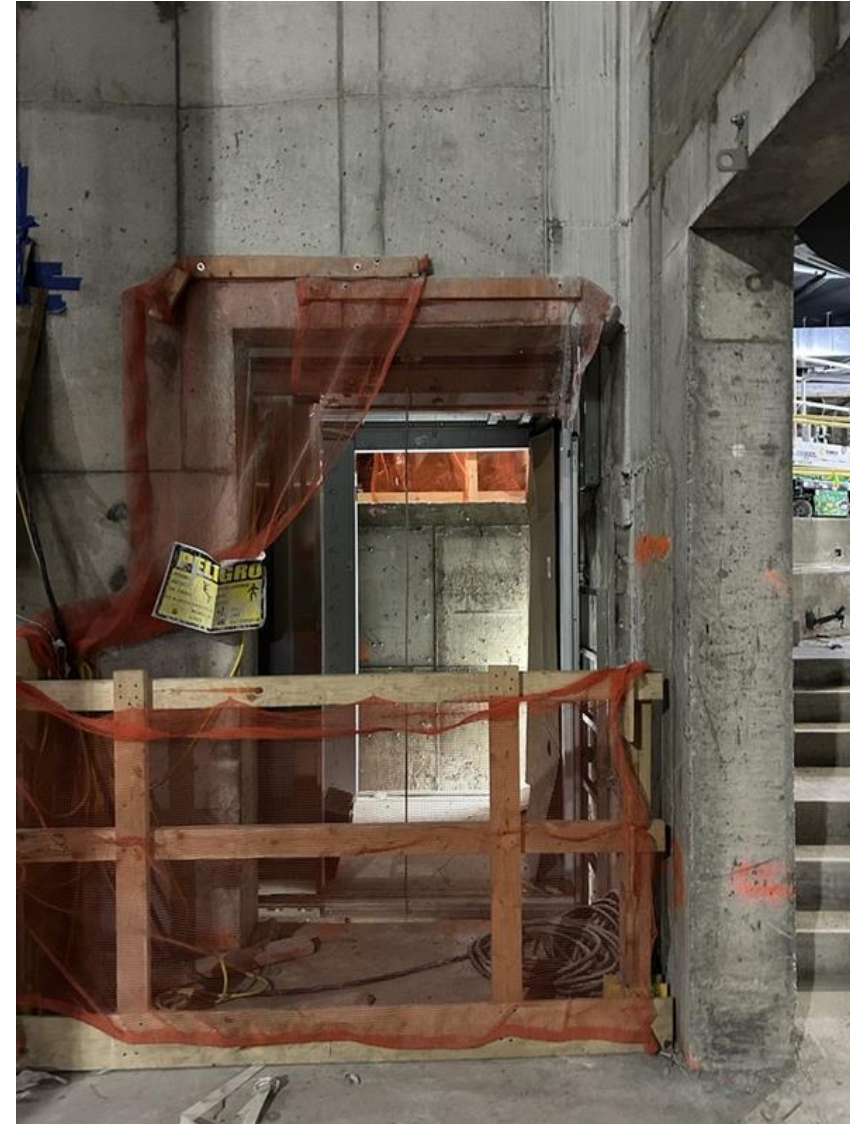


1 Pace Plaza East Renovation - Progress Photos



Spruce Street Stoop Stairs.



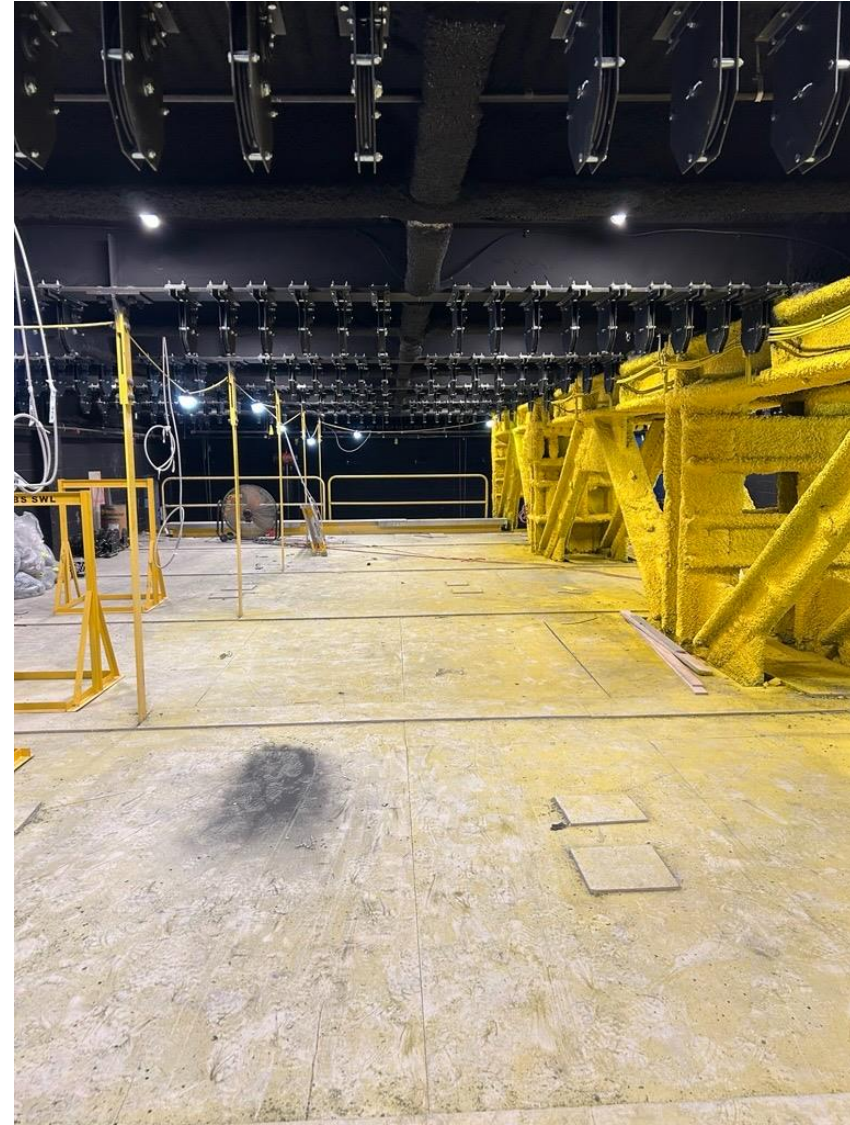
New passenger elevator for access to all venues.

1 Pace Plaza East Renovation - Progress Photos



Progress in Schimmel Theatre, concrete slab pour near Gold Street opening.

1 Pace Plaza East Renovation - Progress Photos

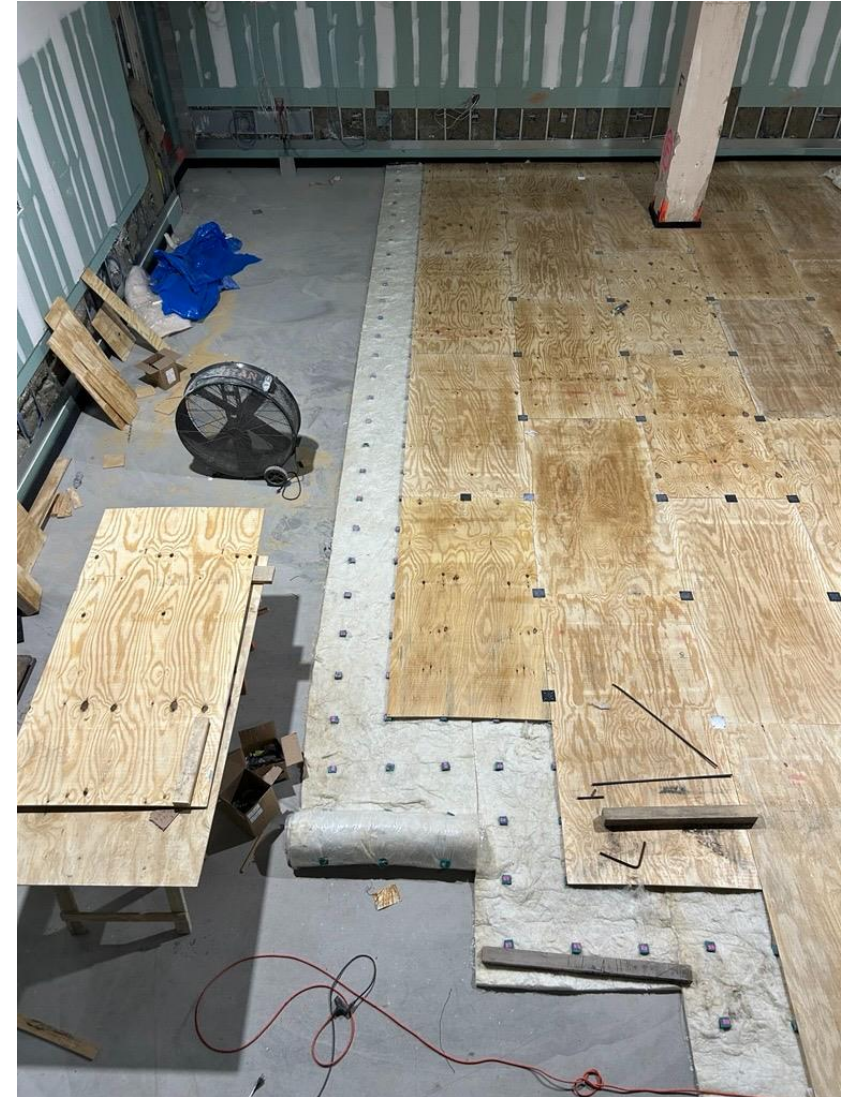


Schimmel Theatre loft block installation for venue rigging equipment is being installed.

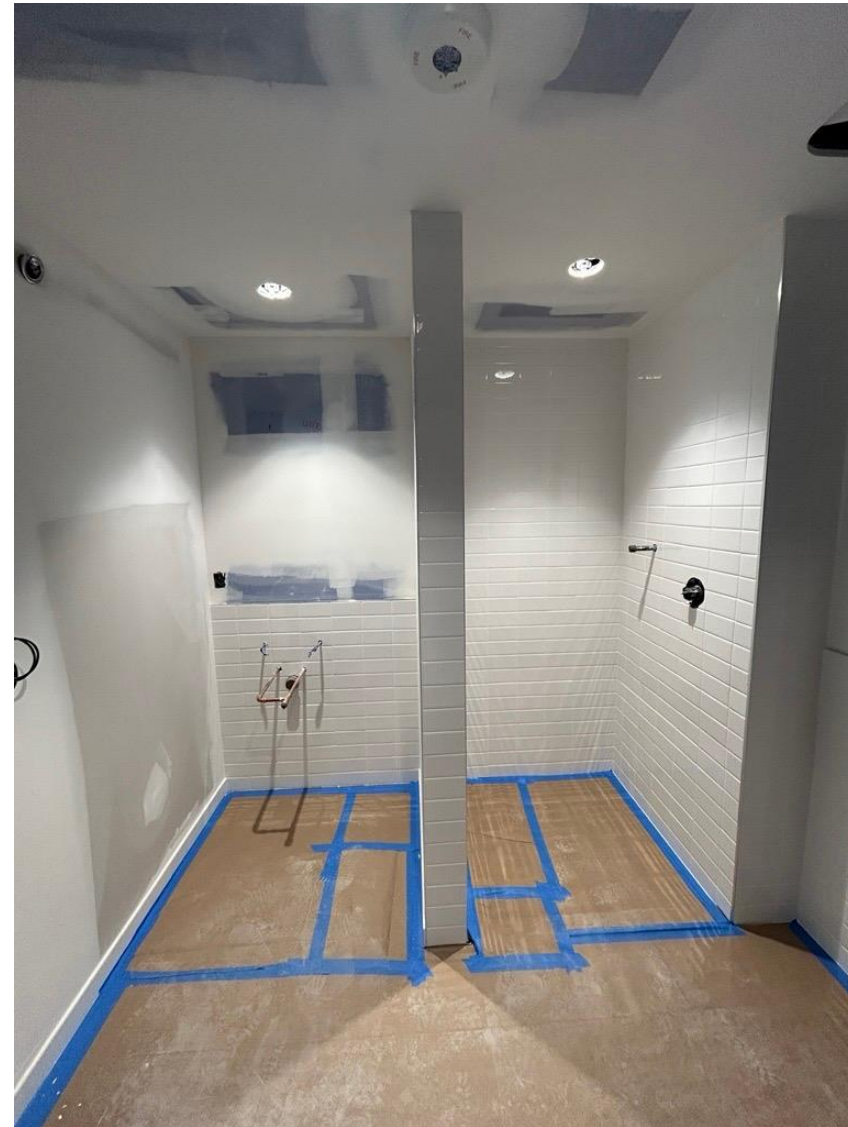
1 Pace Plaza East Renovation - Progress Photos



Specialty hardwood floors being installed in the Medium Venue.



1 Pace Plaza East Renovation - Progress Photos



Maria's Tower bathroom tile installation mock-up progression.

1 Pace Plaza East Renovation - Progress Photos



Campus Planning & Facilities Team visited the construction site on 08/01.

