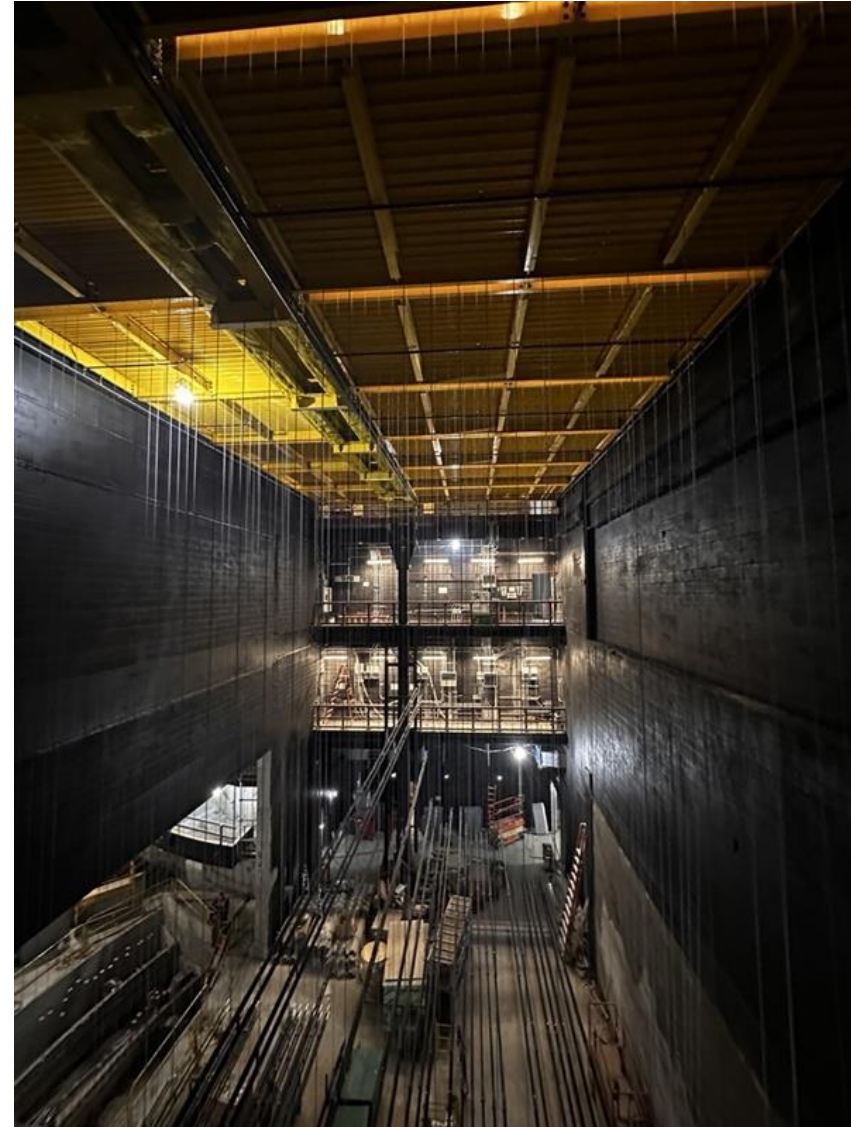


1 Pace Plaza East Renovation - Progress Photos

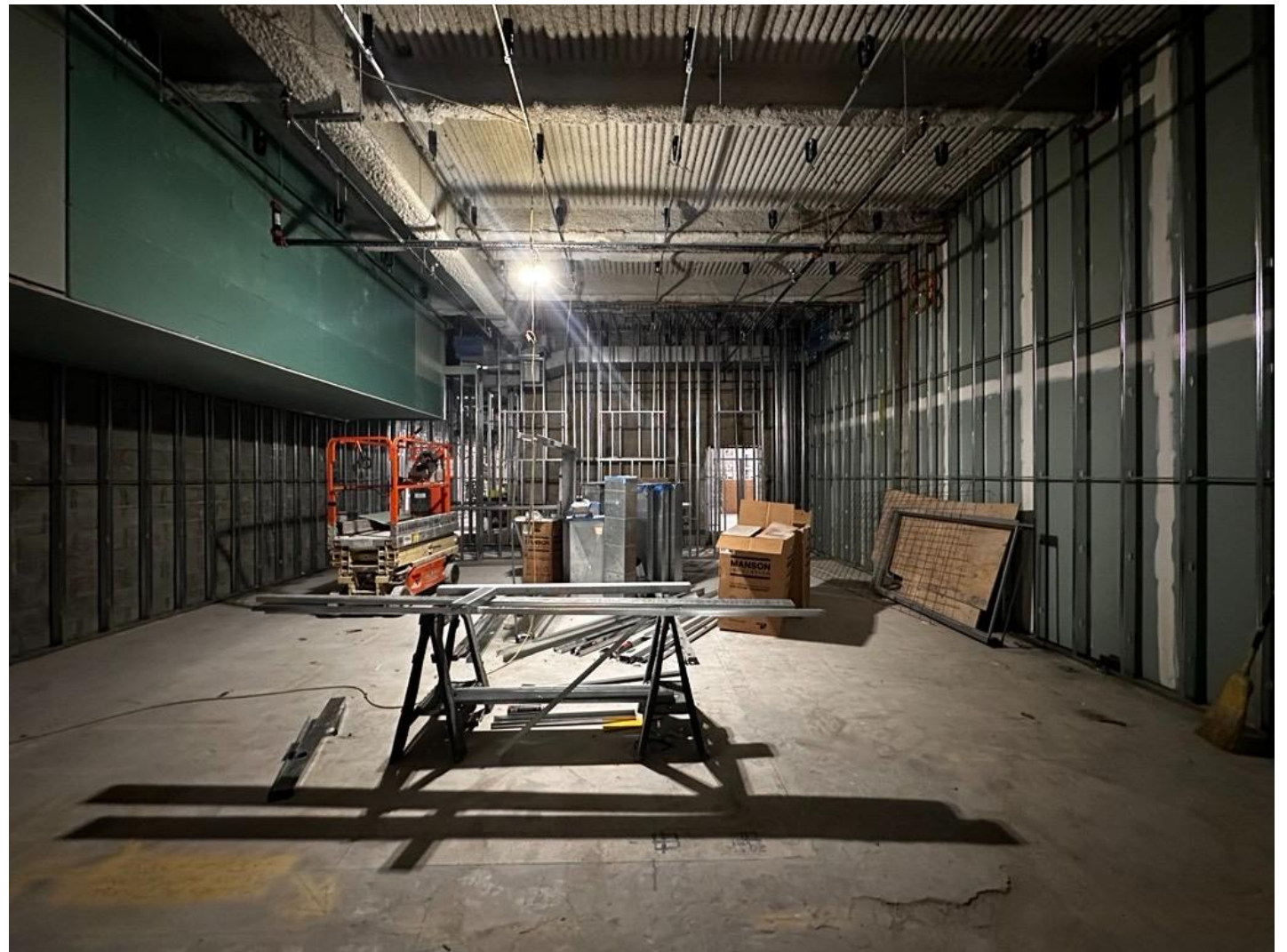


Installation of theater equipment is ongoing in the Schimmel Theatre.

1 Pace Plaza East Renovation - Progress Photos

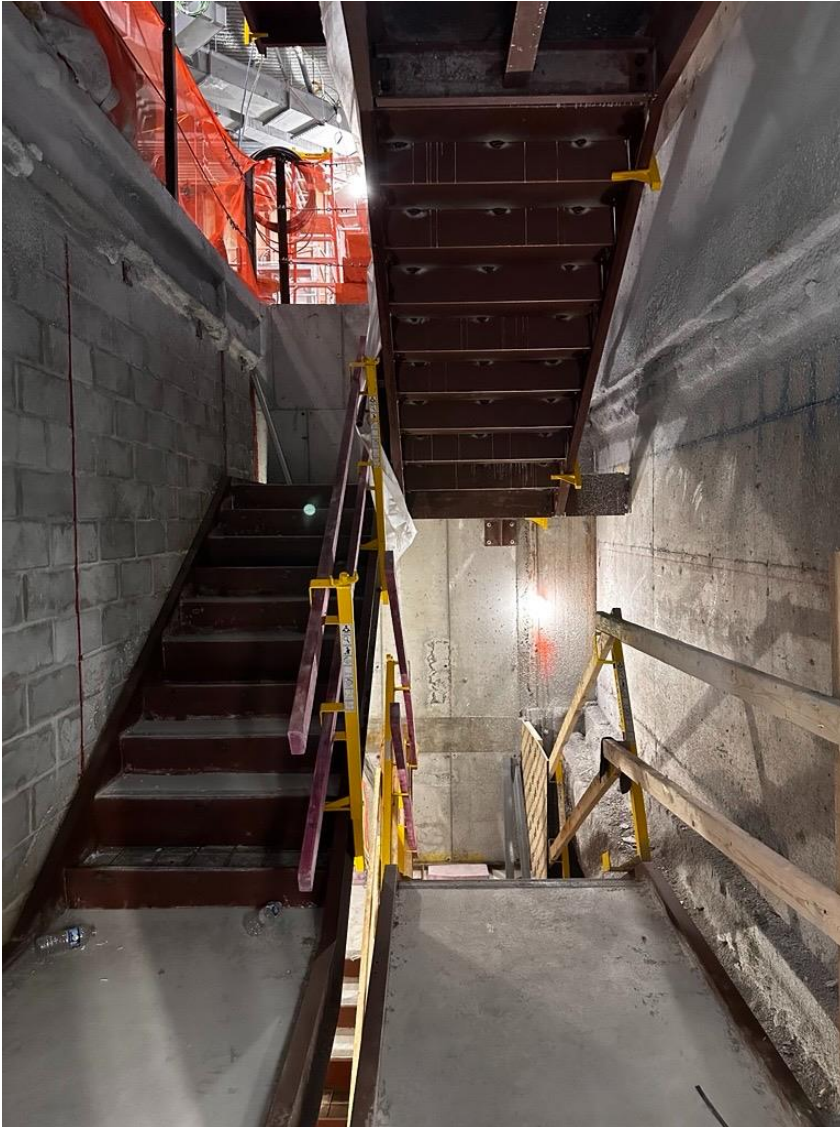


View of ongoing installation from the catwalk of the Medium Venue.



General progress of interior fitout in the Screening Room.

1 Pace Plaza East Renovation - Progress Photos



Stair J concrete pad pour is ongoing.

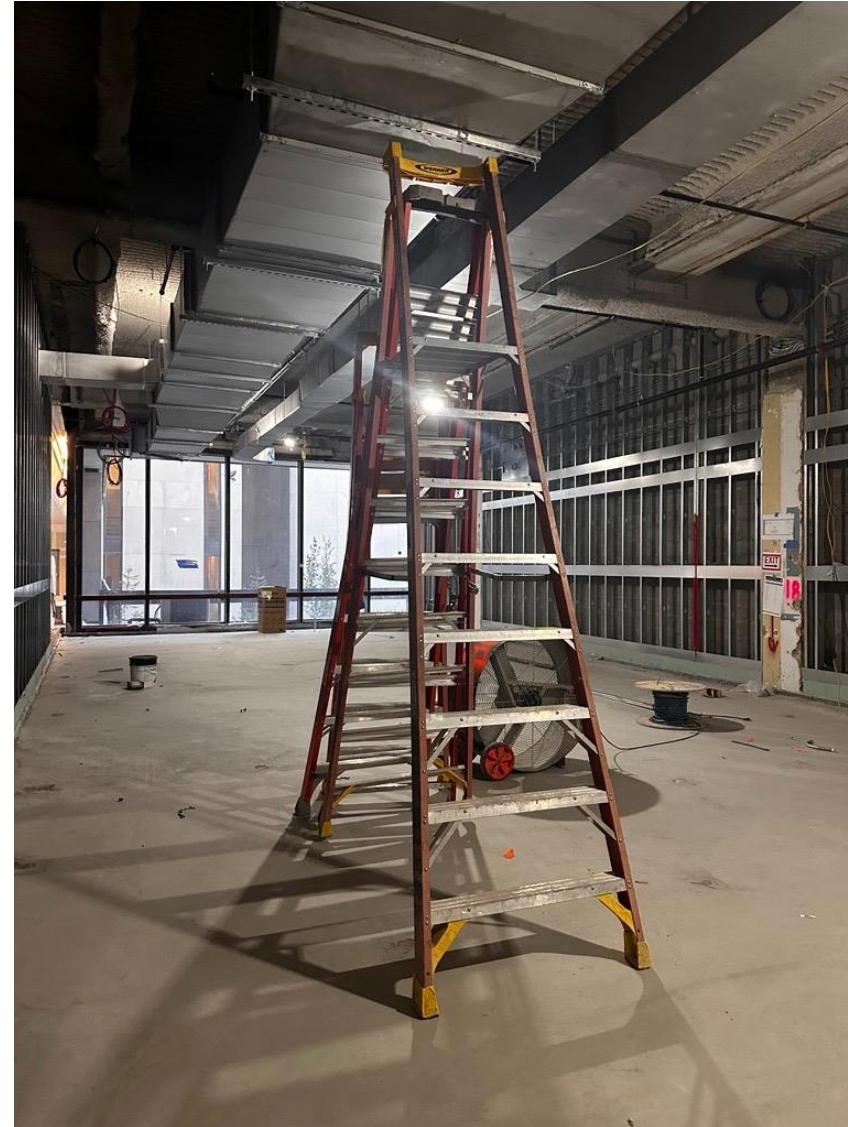


Spruce Street Stoop Staircase.

1 Pace Plaza East Renovation - Progress Photos

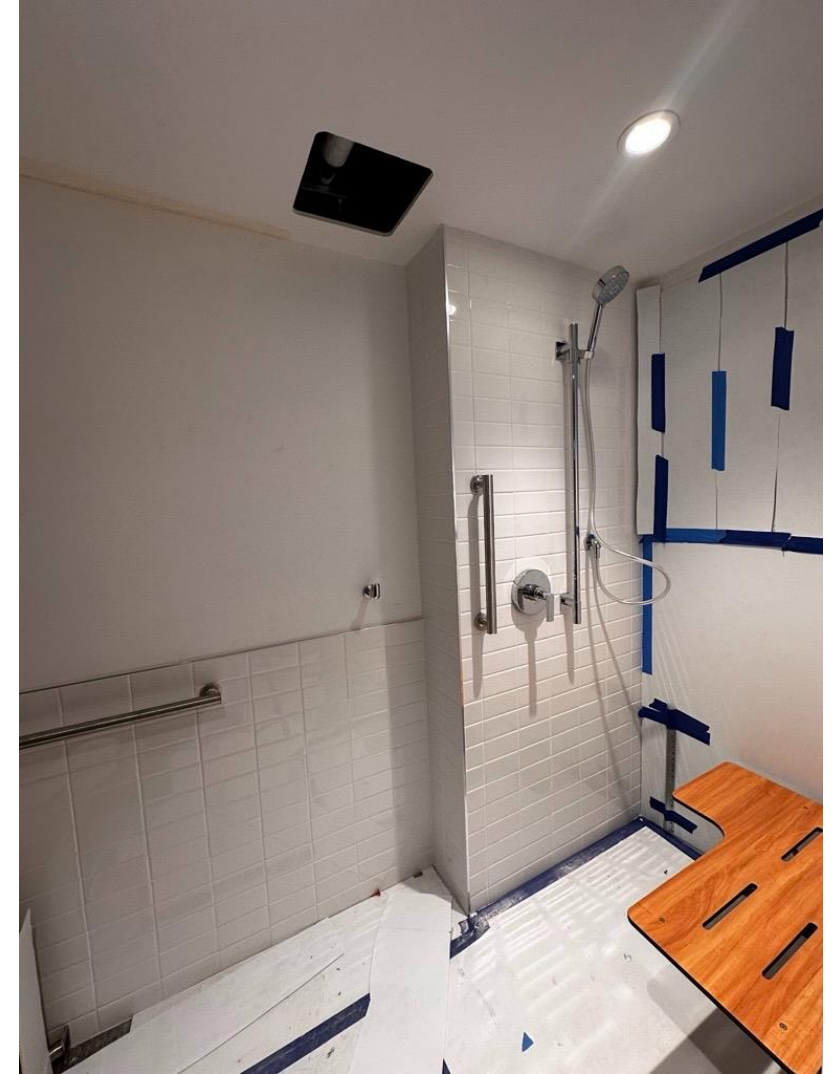


Progress continues in the Podium corridors, lights are being hung.



MEP installation continues in the Small Dance Rehearsal Studio.

1 Pace Plaza East Renovation - Progress Photos



Progress in Maria's Tower 18th floor Amenity Space and bathrooms throughout.