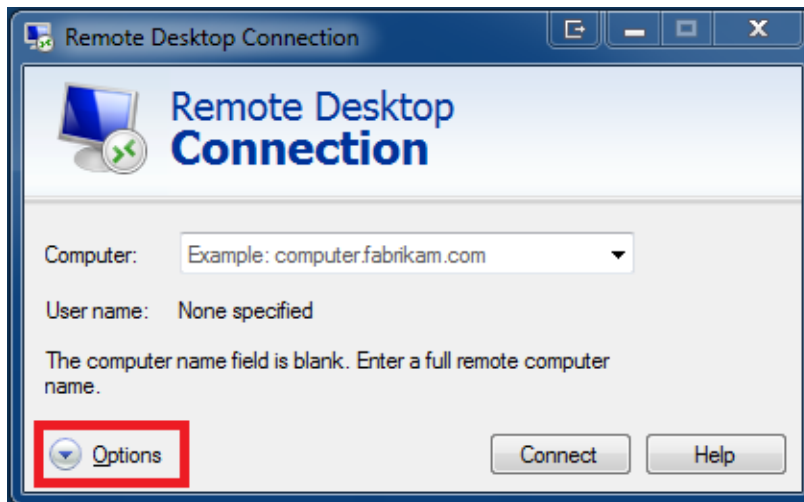


# Accessing RDSessionFarm1 from Off-Campus

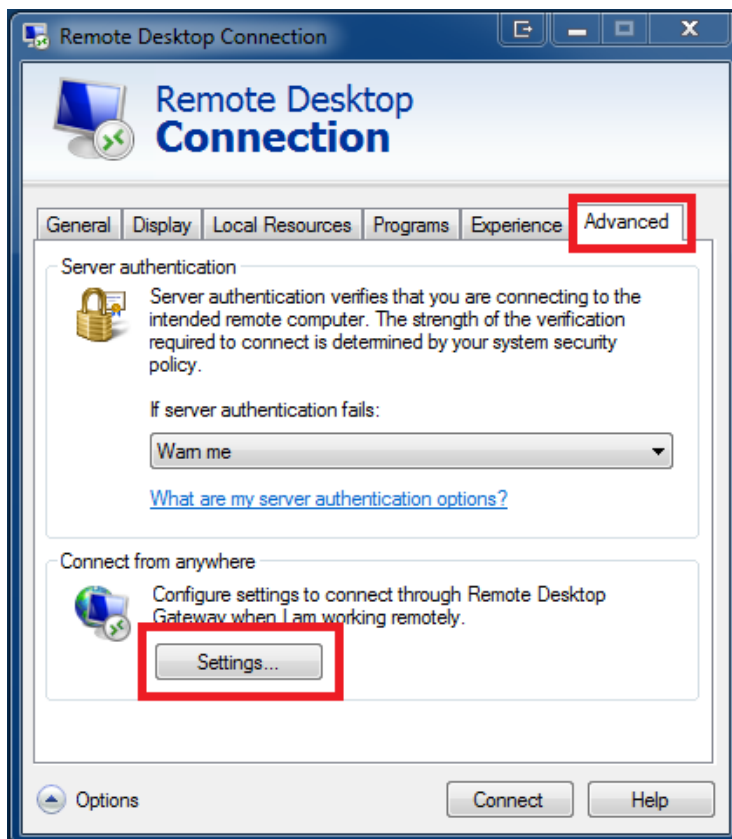
This document contains instructions for connecting remotely to the rdsessionfarm1 terminal server from a computer located off-site for remote access and using Minitab, SPSS and other software remotely from your Windows machine:

**PLEASE NOTE: A VPN connection is NOT required for these instructions to work**

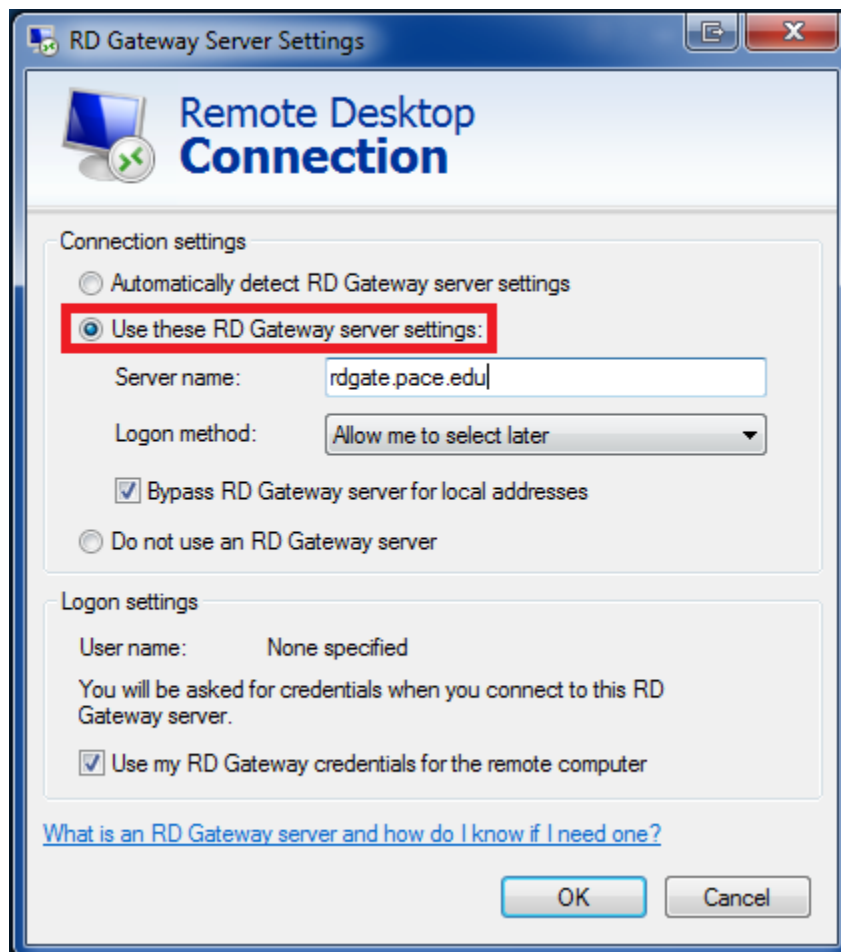
- click **Start**
- click **All Programs**
- click **Remote Desktop Connection** under **Accessories**
- click **options** button in the lower left corner



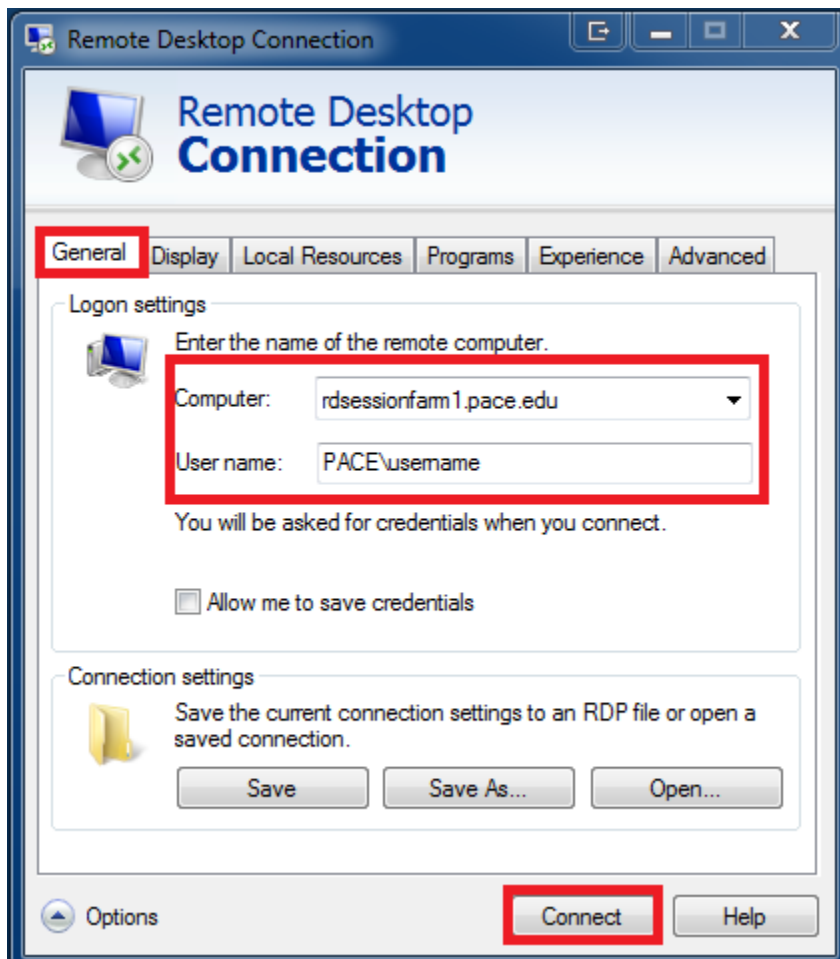
- click **Advanced** tab and select **Settings**



- click **Use these RD Gateway server settings** under Connection Settings
- type *rdgate.pace.edu* in the **Server name** field and make sure the above information is reflected in your remote desktop settings.
- click **OK**

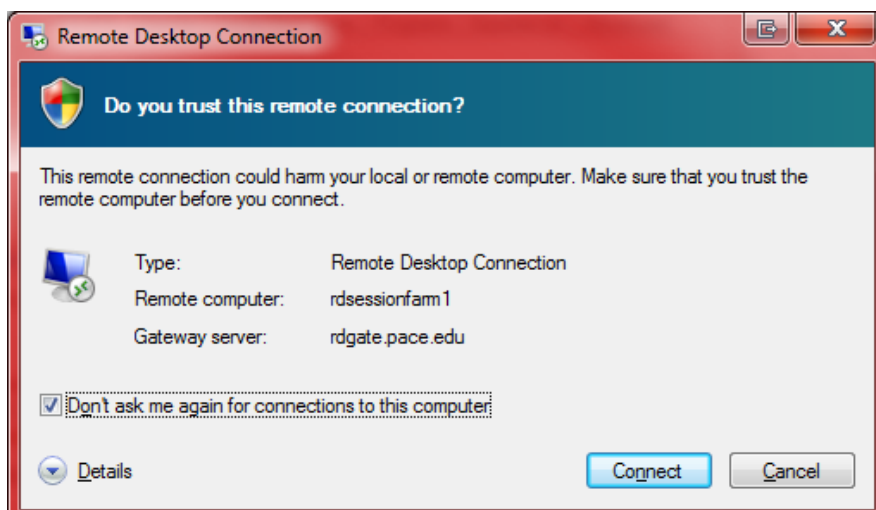


- click **General** tab
- type *rdsessionfarm1.pace.edu* in the **Computer** field
- type *PACE\username* in the **User name** field
- click **Connect**

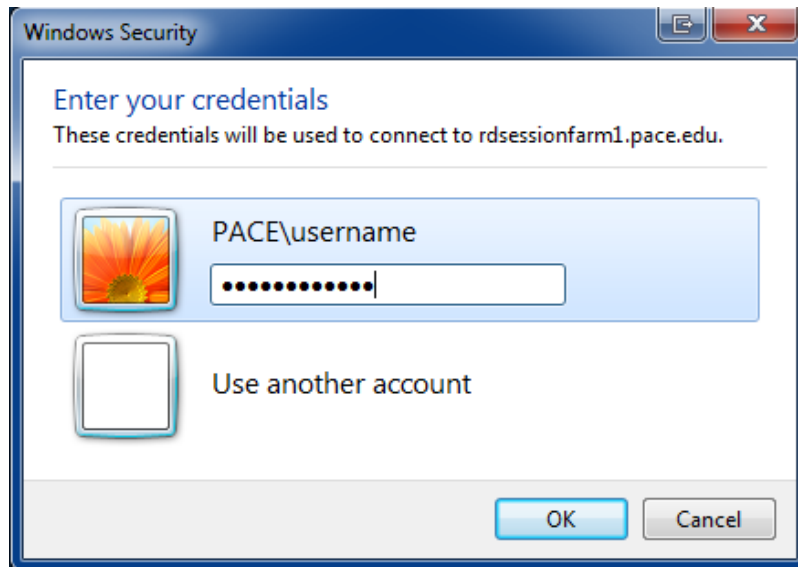


If you receive the prompt “Do you trust this remote connection”

- place a check next to **Don’t ask me again for connections to this computer**
- click **Connect**



- type *your MyPace Portal Password* when prompted



You will be logged into the Terminal Server.

To disconnect from Terminal Server:

- click **Start**
- click **Log off**

