

Remote Desktop Access

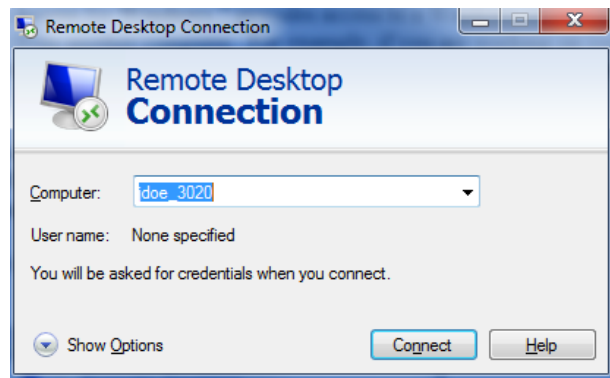
Introduction

Remote Desktop Access for **Windows 7** provides access to a Windows session that is running on your computer from another computer. For example, if you are working on your computer from home, you will be able to access all applications, files, and network resources on your office computer.

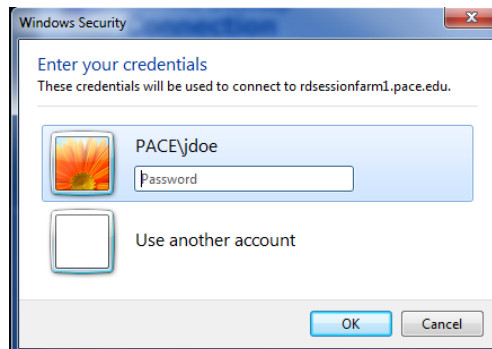
- click **Start**
- select **All Programs** and click **Accessories**
- click **Remote Desktop Connection**



The *Remote Desktop Connection* dialog box displays.



- type *your work 'office' computer's Full computer name* in the **Computer** field
- click **Connect**
- click **OK** to accept Pace University's Appropriate Use Policy



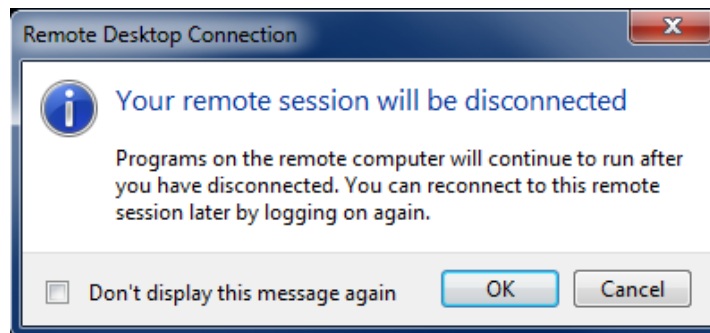
- enter *your MyPace Portal Username* and *Password* to log into your 'office' computer
- click **OK**

Disconnecting from Remote Desktop and VPN sessions for Windows 7 Professional

To end a Remote Desktop session:

- click **Start**
- click **Disconnect**

The *Disconnect Windows* dialog box displays.



- click **OK**
- or-
- click the **X** on the toolbar at the top-middle portion of the screen



- click **OK**