

Off-Campus connection to RDSessionFarm1 from a Mac

Introduction

This document contains instructions for connecting to the rdsessionfarm1 terminal server from a Mac computer located off-campus for remote access. Users will have access to Minitab, SPSS, and various other eligible software. You will be using Microsoft Remote Desktop application.

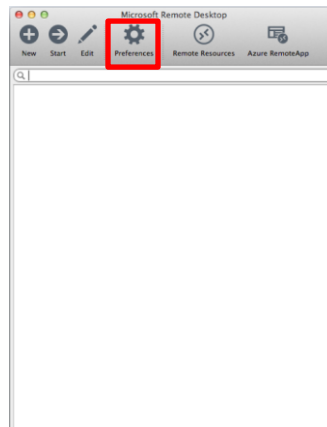
Note: Do not use Remote Desktop for Mac.

Note: Virtual Private Network (VPN) is not required for off-campus connection to RD Session Farm 1.

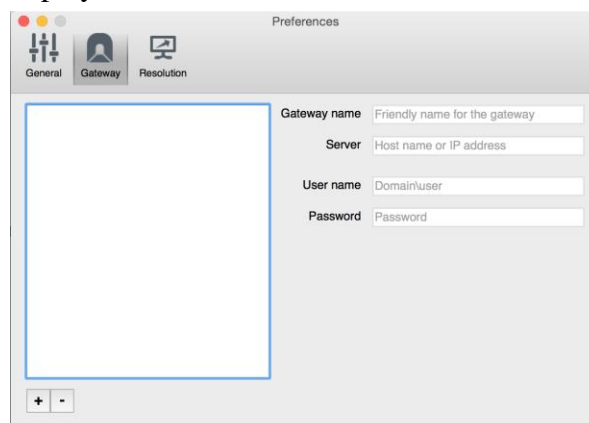
- download [Microsoft Remote Desktop](#) (8.0.43 or higher) from the Mac App Store

Once you have installed the app, the application will appear in the Applications folder.

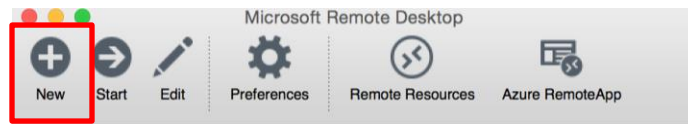
- open **Microsoft Remote Desktop App**
- click **Preferences**



The *Preferences* window displays:

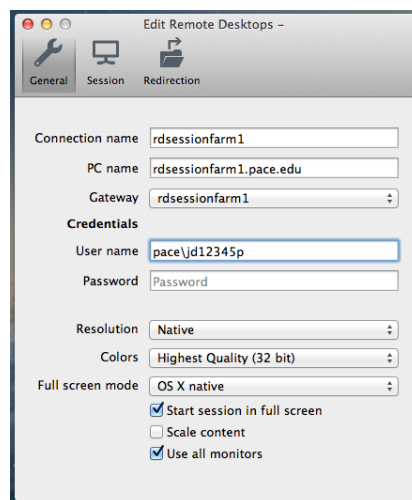


- click **Gateway** at the top of the window
- click + sign to add a new Remote Desktop Connection
- type *rdsessionfarm1* in **Gateway Name** field
- type *rdgate.pace.edu* in **Server** field
- type *pace\yourusername* (e.g., pace\jd12345p) in **User name** field
- leave password field blank
- at the top left corner, click **Red** button to save and exit



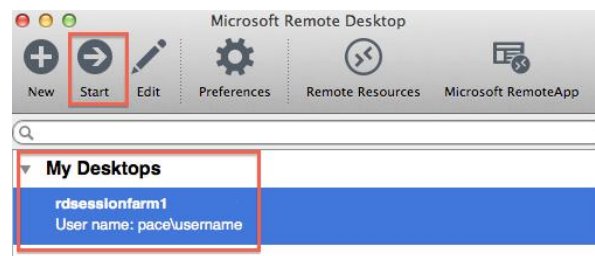
- click **New** to open the Edit Remote Desktop window

The *Edit Remote Desktops* - window displays:

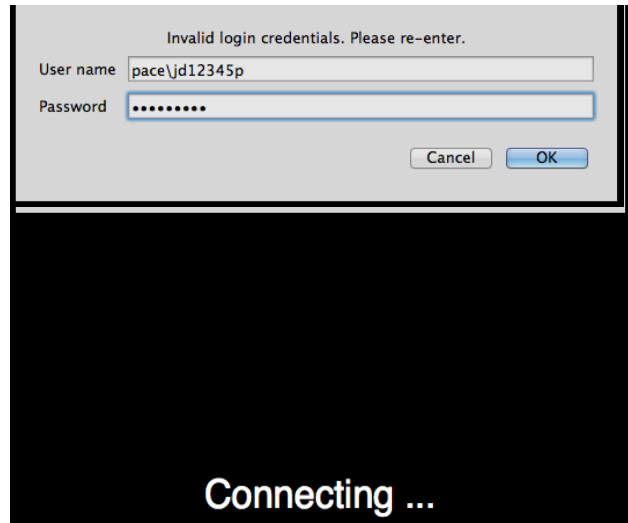


- type *rdsessionfarm1* in **Connection Name** field
- type *rdsessionfarm1.pace.edu* in **PC name** field
- select *rdsessionfarm1* from **Gateway** drop down menu
- type *pace\yourusername* (e.g., pace\jd12345p) in **User Name** field
- leave password field blank
- do not change the remaining options in the Edit Remote Desktops window
- at the top left corner, click **Red** button to save and exit

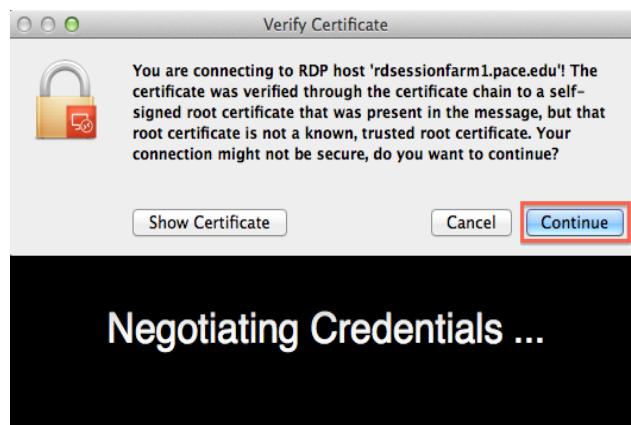
The *Microsoft Remote Desktop* window displays:



- select **rdsessionfarm1** and click **Start**
- type *your MyPace Portal password* and click **OK**



The *Verify Certificate* window displays:

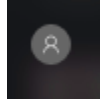


- click **Continue**

You will then be connected to rdsessionfarm1 from your Mac.

To disconnect from Terminal Server:

- click **Start**
- click **the User Account button**



- click **Sign out**

