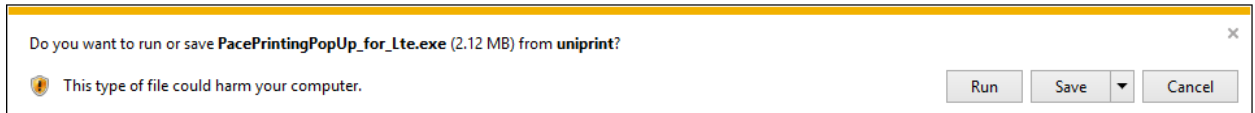
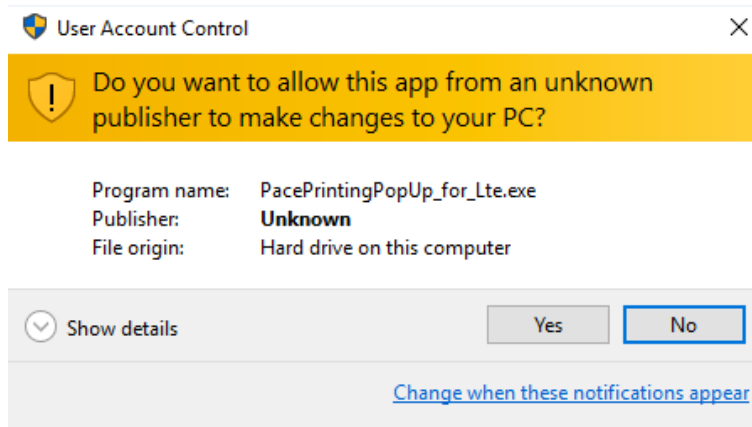


To download and install the Print Client:

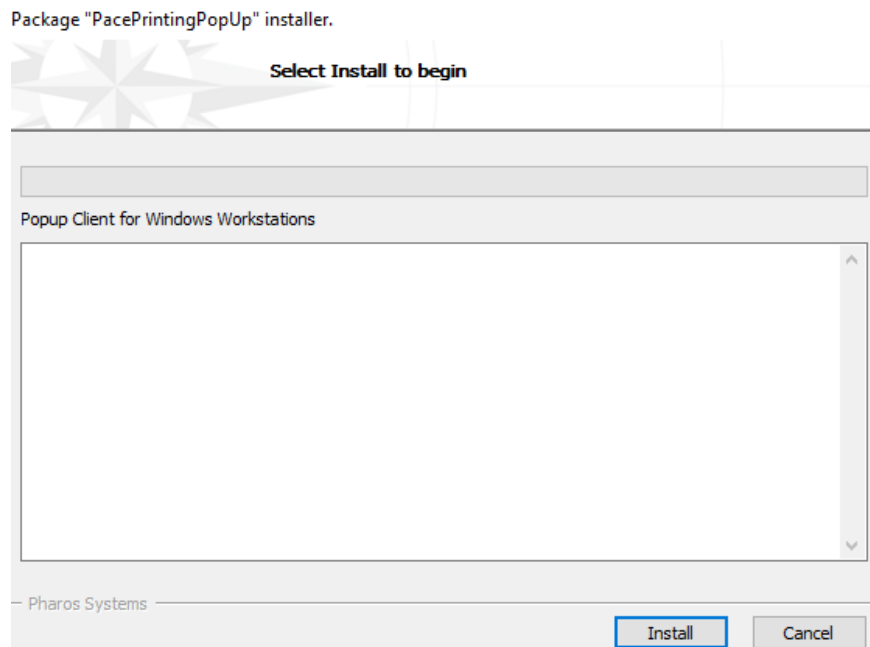
- Go to [Printing Client Download](http://www.pace.edu/its/it-services-and-support/printing-and-graphics-services/student-printing/print-client-download) (<http://www.pace.edu/its/it-services-and-support/printing-and-graphics-services/student-printing/print-client-download>)
- Click **B&W Print Client (Windows)** or **Color Print Client (Windows)**. Note: Color prints can only be released at the Birnbaum and Mortola Libraries



- Click **Run**



- Click **Yes**



- Click **Install**
- Click **Finish**



Pace_Printing_Po
pup

Once the client has been installed, Pace_Printing_Popup will appear as a selection of available printers.