

Fall 2016

Open House

New York City Campus

One Pace Plaza

New York, NY

October 23, 2016

10:00 a.m.–2:00 p.m.

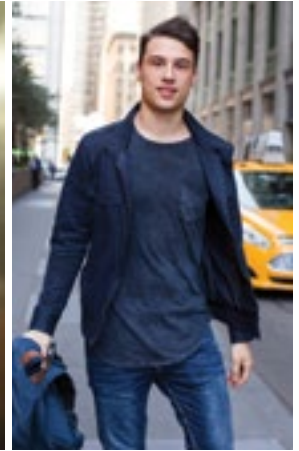
Take the Path Toward Greatness

- Superior professional education
- Robust scholarships and financial aid
- Two strategic New York locations



#PaceBound

Welcome to Pace University!



Campus and Residential Tours

Campus Tours

Student Union, B-Level

Beginning at 10:00 a.m., tours leave every 15–30 minutes throughout the program. Please note: these tours do not include the residential buildings.

Residential Tours

Student Union, B-Level

Beginning at 11:00 a.m., tours leave every 15–30 minutes.

Admissions and Financial Aid Sessions

Pace 101: Freshman and Transfer

Admissions and Financial Aid

Lecture Hall North, 2nd Floor

Stop by with questions about the admission process, application deadlines, and scholarships. Learn more about the financial aid process, FAFSA, and our Net Price Calculator. Offered at 10:00 a.m., 11:00 a.m., 12:00 p.m., and 1:00 p.m.

Program

Check-In and Registration

► **9:00 a.m.** One Pace Plaza, Front Entrance

Meet the Schools and Colleges Session I: Academic Overview from the Deans and Students Panel *(See back panel for majors by school)*

10:00 a.m.–11:30 a.m. Sessions repeat at 11:45 a.m.

College of Health Professions 163 William Street, 6th Floor

Dyson College of Arts and Sciences (including the School of Performing Arts) Schimmel Center, C-Level

Lubin School of Business Bianco Room, B-Level

Pforzheimer Honors College Lecture Hall South, 2nd Floor

School of Education Lecture Hall West, 2nd Floor

Seidenberg School of Computer Science and Information Systems 163 William Street, 2nd Floor

Lunch

► **11:00 a.m.–2:00 p.m.** One Pace Plaza, B-Level
Grab and go lunch will be available in the Reading Room.

Student Service Fair

► **11:00 a.m.–2:00 p.m.** Student Union, B-Level
Learn about:

- Career Services
- Counseling and Disability Services
- Pace Security
- The Center for Academic Excellence
- Elisabeth Haub School of Law
- Student Development and Campus Activities
- (First-Year Programs, Advising Center for Exploring Majors, Challenge to Achievement at Pace, the Tutoring Center)
- Financial Aid
- Study Abroad
- Combined Degree Programs
- Housing and Residential Life
- Undergraduate Admission (First-Year and Transfer Students)
- Graduate Admission
- Veterans Affairs
- OASIS Program



Interested in joining a club? Come see our student leaders in the Student Union and a representative will walk you to our newly renovated student activities space.



Meet the Schools and Colleges Session II: Academic Overview from the Deans and Students Panel *(See back panel for majors by school)*

► 11:45 a.m.–1:15 p.m.

College of Health Professions 163 William Street, 6th Floor

Dyson College of Arts and Sciences (including the School of Performing Arts) Schimmel Center, C-Level

Lubin School of Business Bianco Room, B-Level

Pforzheimer Honors College Lecture Hall South, 2nd Floor

School of Education Lecture Hall West, 2nd Floor

Seidenberg School of Computer Science and Information Systems 163 William Street, 2nd Floor

Special Interest Sessions

► 1:15 p.m.–2:00 p.m.

Honors College Meet and Greet Honors Suite, 2nd Floor

Pforzheimer Honors College invites you to stop by the Honors Lounge to speak with Honors staff and students.

Seidenberg Tech Meet-up 163 William Street, 2nd Floor

Interested techies can join the Seidenberg School of Computer Science and Information Systems community for a tour and interactive presentations in app development and computer forensics.

Walking Tour of Historic Downtown Manhattan Student Union, B-Level

Professor Steven Goldleaf, PhD, will lead this informative tour of historic lower Manhattan.

Visit the Pace University Bookstore.

Present this program for a **10% discount** off one emblematic item between 10:00 a.m. and 3:00 p.m. Located at 41 Park Row on the Ground Floor.

Important Dates to Remember

	Early Decision*	Early Action 1	Early Action 2	Performing Arts†	Regular Decision
Application Deadline	November 1	November 1	December 1	January 15	February 15
Admission Decision Notification	December 1	December 1	January 1	Rolling after January 1	Rolling after January 1
Deposit Deadline	February 15	May 1	May 1	May 1	May 1

* Performing Arts applicants with the exception of Commercial Dance cannot apply under the Early Decision plan.

†Deadline for submission of admission application. Audition is also required. See Performing Arts website for audition requirements.

October 1

First day to file FAFSA

November 15

Priority deadline for filing the FAFSA form for fall semester (maximum aid/scholarship consideration)

- Have you already submitted all of your application materials? Check the status of your application by visiting applicantportal.pace.edu.



► Exceptional Academics

Majors

College of Health Professions

Communication Sciences and Disorders
Health Science
Nursing (four-year program)
Teaching Students with Speech and Language Disabilities

Dyson College of Arts and Sciences

Acting
Acting for Film, Television, Voice-overs, and Commercials
American Studies
Applied Psychology and Human Relations
Art
Art History
Biochemistry
Biological Psychology
Biology
Biology Pre-Professional
Occupational Therapy
Optometry
Podiatry
Chemistry
Chemistry Pre-Professional
Chemical Engineering
Cinema and Filmmaking, Digital
Commercial Dance
Communication Studies
Communications
Criminal Justice
Directing
Economics
Business Economics
English
English and Communications
English Language and Literature
Environmental Science
Environmental Studies
Film and Screen Studies
Forensic Science
Global Asia Studies
Global Studies
History
Journalism, Digital
Language, Culture, and World Trade
Latin American Studies
Liberal Studies
Mathematics
Modern Languages and Cultures
Musical Theater
Peace and Justice Studies
Personality and Social Psychology
Philosophy and Religious Studies
Physics
Political Science

Production and Design for Stage and Screen
Professional Studies
Psychology
Public Relations
Sociology-Anthropology
Spanish
Stage Management
Women's and Gender Studies

Lubin School of Business

Accounting
Forensic Accounting
Internal Auditing
Accounting, Public
(combined degree and CPA Prep)
MBA in Public Accounting
MS in Financial Management
MS in Taxation
Accounting-Public Accounting
CPA Prep (five-year program)
Finance
General Business
Information Systems-Business
International Management
Management
Arts and Entertainment Management
Business Management
Entrepreneurship
Health Care Management
Hospitality and Tourism Management
Human Resources Management
Marketing
Advertising and Integrated Marketing Communications
Global Marketing Management
Sports Marketing
Quantitative Business Analysis

School of Education

Education, Adolescent
Biology
Chemistry
Earth Science
English
History/Social Studies
Mathematics
Spanish
Education, Childhood

Seidenberg School of Computer Science and Information Systems

Computer Science
Information Systems-Computer Science
Information Technology
Professional Computer Studies

To learn about these programs, visit www.pace.edu/academics.

*As of August 12, 2016

Office of Undergraduate Admission

One Pace Plaza
New York, NY 10038
Telephone: (212) 346-1323
Fax: (212) 346-1040
E-mail: ugnyc@pace.edu
[@PaceAdmissions](https://www.instagram.com/PaceAdmissions)



#PaceBound