

Charge!: Pace unveils 'Solar Tree'

Bringing together imagination, technology and sustainability, Pace University on Friday unveiled a "Solar Tree" on its Pleasantville campus.

With the support of Consolidated Edison Company of New York, the modern-art style "e-tree," located on the lawn between Elm and Alumni Halls and the Kessel Student Center, was unveiled at a ribbon-cutting ceremony with local officials and representatives of Con Edison.

"Pace University is committed to environmental stewardship, just as we're committed to providing a welcoming campus where students, faculty, and staff can convene and collaborate," said Pace President Marvin Krislov. "We are grateful to Con Edison for making the Solar Tree project a reality, and for providing a focal point where our community can relax, recharge, and learn about renewable energy."

The e-tree will provide a shaded resting area with benches that can seat six, Wi-Fi, six USB ports, an interactive LCD display screen, night lighting, and a panic button feature. The tree is nearly 15-feet tall and weighs 2,755 pounds. Seven insulated solar panels that can provide 1,400 watts of energy are suspended from its branches.

"The Solar Tree is a smart, novel, and self-sustaining source of clean energy as well as a symbol of Pace University's long partnership with Con Edison," said Jane Solnick, Con Edison's director of Westchester Regional and Community Affairs. "It's also a learning tree where students, faculty and the public may

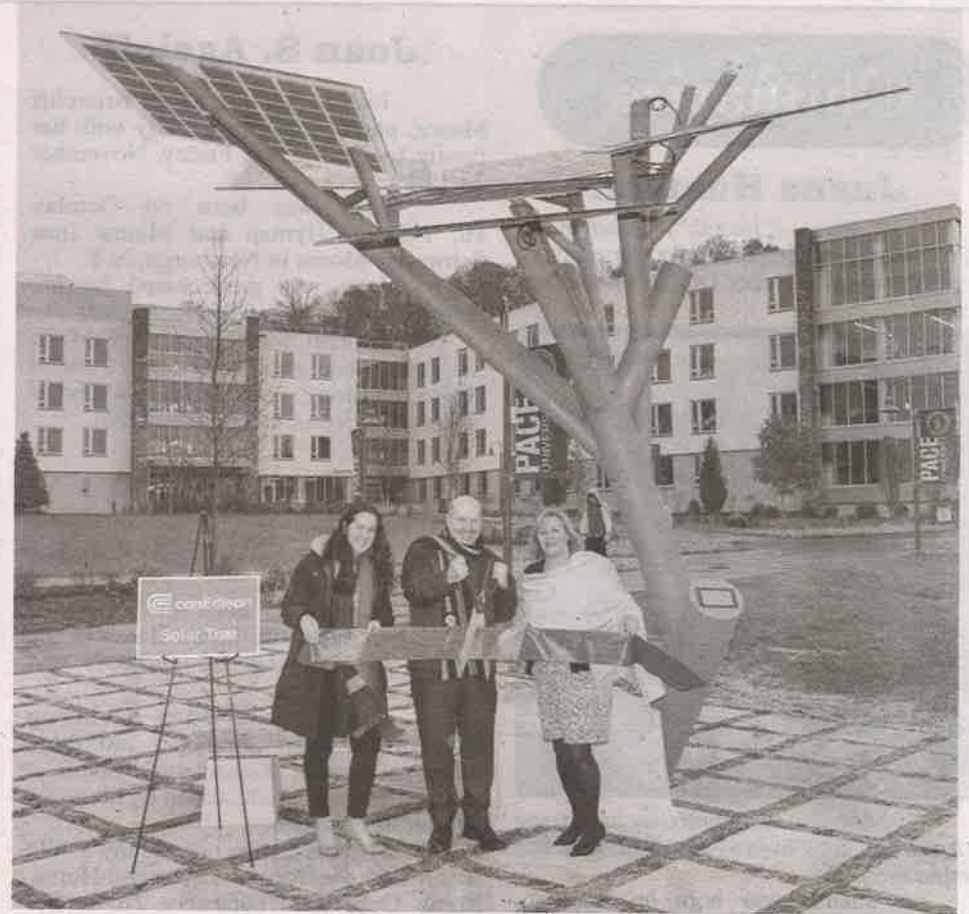
benefit from all the university has to offer. Renewable energy is the fastest growing source of the country's supply of electricity and Con Edison, through our Clean Energy Businesses, is North America's second-largest solar producer."

Con Edison has solar and wind assets in 17 states, with a total renewable portfolio of 2,600 megawatts.

Pace University has for decades been a leader in environmental stewardship. The university offers a number of undergraduate and graduate degrees in environment studies, environmental science and environmental policy, as well as a professional certification in ecology. Additionally, The Elisabeth Haub School of Law ("Pace Law") was ranked No. 1 in the country this year for environmental law, a signature program at the school, by the latest *U.S. News and World Report*.

The Solar Tree is the latest addition to Pace's Pleasantville campus, which has gone through a multi-million-dollar transformation that consolidated its Briarcliff and Pleasantville campuses and added new residence halls as well as renovated playing fields. In 2015, Pace also unveiled its Environmental Center Complex that includes classrooms and a replica of the former farmhouse building which serves as a key facility for faculty and students.

An informal poll of 152 students, faculty and staff at Pace University showed support for adding a solar tree to the quad. Students, faculty and staff chose the e-tree design from among three design concepts.



At last Friday's unveiling of a 'solar tree' on Pace University's Pleasantville campus quad, from left, Con Edison Co. Corporate Affairs Manager Laura Rizzo, Pace University President Marvin Krislov and Jane Solnick, director of Westchester Regional and Community Affairs for Con Edison.

Photo: Mark Liflander