


## 2018 GRADS

Senior College Start August 2018

|   |   |   |
|---|---|---|
|  |  |  |
| Create Your College List  | Prep for Your Apps  | Complete Your Apps  |
| 6.28 @ 1PM<br>6.29 @ 3PM<br>7.10 @ 1030AM   | 7.20 @ 1PM<br>+ More in Fall 1  | Ongoing as apps open.<br><br>CUNY Due: 2.1  |

# Developing a Graduation Habit

## Supporting Transfer Students

Danny Ambrose, Ed.D.  
Director of Mentoring & Student Success

Guttman Community College, CUNY

Danielle Insalaco-Egan, Ph.D.  
Assistant Dean of Student Support

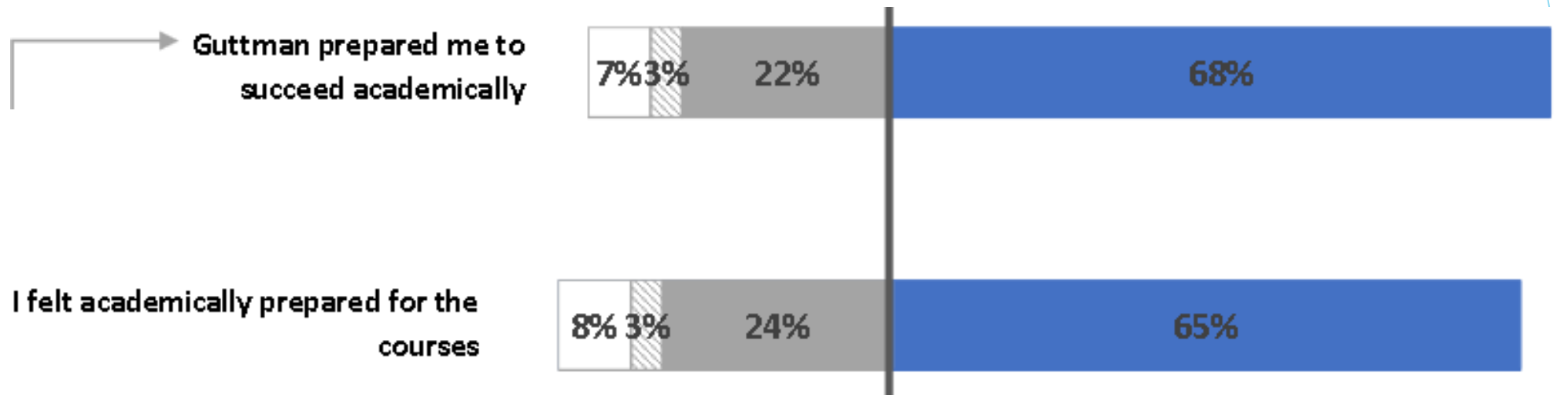
# Our Message to Students

- ▶ **Braxton's model of institutional integrity (2004)**
  - ▶ College-wide engagement
- ▶ **You can earn a bachelor's degree!**

**Nearly 85% of graduates transfer to a 4-year institution**

# Our Students' Transfer Experience: What We Know

- ▶ Full-time enrollment immediately after graduation
- ▶ Less support and higher workloads



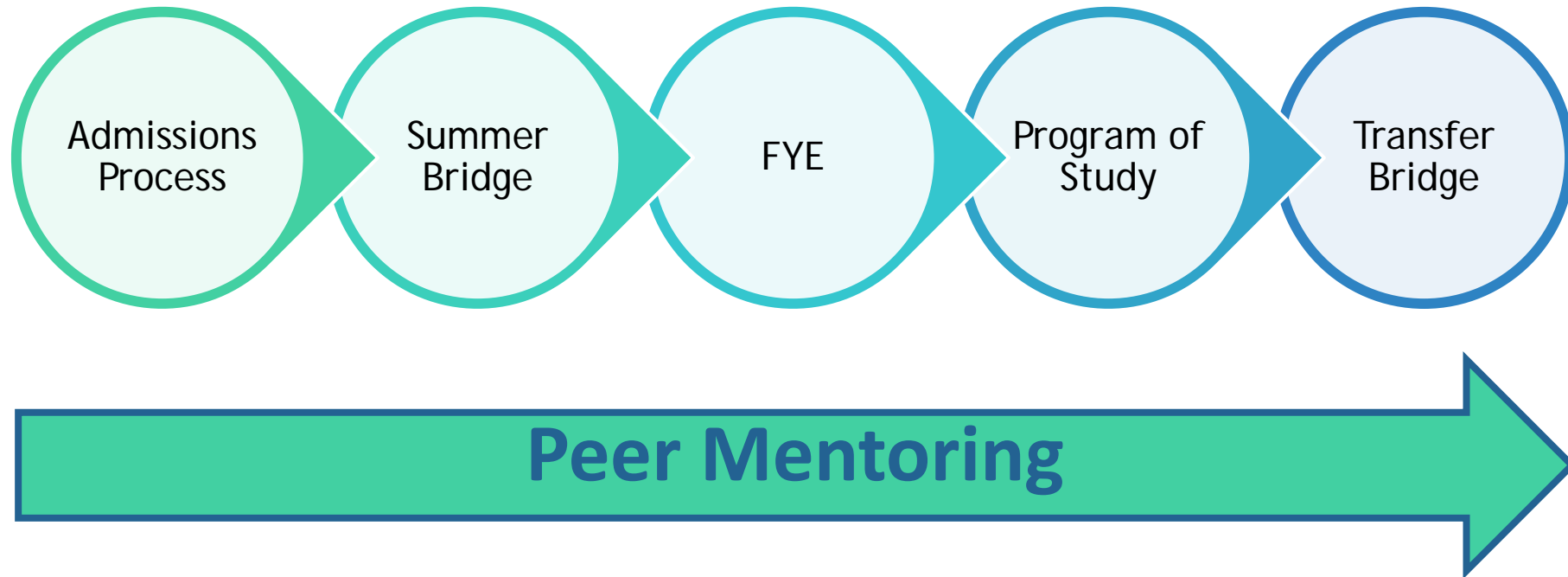
# Let's Talk about Transfer

- ▶ **HIPs in support of transfer**
  - ▶ **High-touch advising**
  - ▶ **Embedded peer mentoring**
  - ▶ **ePortfolio pedagogy**
  - ▶ **Study abroad**
  - ▶ **Civic engagement**





# The Guttman Journey:

## *Peer Mentoring at the Core*





# 2017-2018 Peer Mentor Team

-  Academic Success (Meet-Up)
-  Academic Success (Studio)
-  Admissions & Access
-  Lead Peer Mentor
-  Early College
-  Leadership & Service
-  Transfer
-  \* Returning Peer Mentor



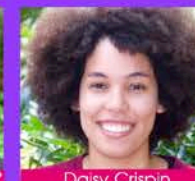
Lizmar Betances\*



Gabrielle Blevins



Lawrencia Cobbinah\*



Daisy Crispin



Claudia Dicecca



Pedro Flores\*



Shakeem Grant



Tabahani Hayles



Shatasia Holley\*



Krimili Infante



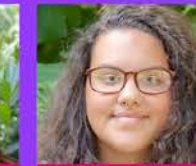
Brian McCollough



Albert Oliveira



Melissa Rivera



Briana Roldan



Jessica Ureña\*



Edwin Wu\*



Miguel S. Almonte\*



Marilyn Antoncui



Haley Balouch



Manny Hake



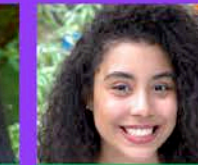
Najla Hughes



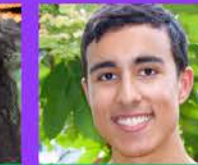
Massa Jabbi\*



Harman Kaur



Kenia Marte\*\*



Santi Martos



Patricio Morochu



Matthew Rojas



Christina Salt Jean



Jalyssa Velasquez



Charlene Aurelius



Odalina Blason\*



Bryan Campos



Hannia Delgado\*\*



Nadia Lopez



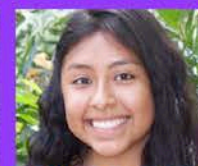
Tiffany Luckin



Nazia Nabi\*



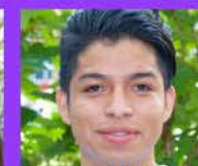
Kayla Negrón



Yoselyn Peralta



Jenn Porto\*



Louis Ruiz



Veronica Santana



Anthony Tejada\*



Pamela Vasquez\*



Jasmine Villa



Samantha Dennehy



Melisse Douglas



Giovanni Lezama\*



Roesha Biggs



Joel Bonifacio



Torrell Daw



Andrew Dejesus



Phaedra Dimitriou



Scarlet Dominguez\*



Erin Golinkoff\*



Oma Hemnath



Francesco Musio\*



Bre'Ann Newsome\*



Britney Peguero\*



Jasmin Reyes\*\*



Shivonne Singh\*\*



Kyle Farrell



Yessica Garcia



Carl Headley



Cecilia Mendez



Isabelle Sanginario



Danny Ambrose



Andrew Bennett

**Stay in touch.**

Web: [guttman.cuny.edu/peermentoring](http://guttman.cuny.edu/peermentoring)

Phone: (646) 313-8149

Email: [peermentoring@guttman.cuny.edu](mailto:peermentoring@guttman.cuny.edu)

Location: Room 105 (Info Commons)



# Schlossberg's Transition Theory (1984)

- ▶ **TRANSITION:** “Any event, or non-event, that results in changed relationships, routines, assumptions or roles.” (Schlossberg, 1984)
- ▶ **Role of Perception:** Key in the transition process; involves 2 levels of appraisals:
  - ▶ *Primary:* How the individual feels about the transition in general
  - ▶ *Secondary:* How the individual feels about their resources in dealing with the transition



## Transfer Peer Mentor

Transfer Peer Mentors design and facilitate Transfer Bridge workshops and Alumni Transition Touch Points for Guttman graduates who have transferred to *Baruch, Brooklyn, City Tech, Hunter, and Lehman College*. These workshops/touchpoints cover tips on navigating academic and administrative matters at the senior college, time management and organizational skills, and getting involved on campus. **Guttman alumni who currently attend one of the above listed senior colleges, who are involved in campus life, who possess strong communication skills, and who desire a career in education or helping professions are well suited for the Transfer role.**



# 2017-2018 Transfer Peer Mentors



**Cecilia – Baruch College**

**Isabelle – Brooklyn College**



**Carl – City Tech**

**Kyle – Hunter College**



**Yessica – Lehman College**

## Transfer Bridge Includes:

- ▶ 2 Transfer Bridge Workshops (at Guttman)
- ▶ 2 Transition Touchpoints (at the senior college)
- ▶ Ongoing communication with a Transfer Peer Mentor



### 3 Reasons You Should Participate

- ✓ Network with fellow Guttman grads who will be attending your senior college.
- ✓ Receive a \$100 Amazon gift card at the conclusion of the second Transfer Bridge workshop.
- ✓ Learn about Alumni Transition Touchpoints during your first Fall/Spring semesters (Baruch, Brooklyn, City Tech, Hunter, and Lehman students only).



## Workshop #1

- ▶ What advising might look like
  - ▶ Financing your education
  - ▶ Acclimating to your new campus
- ▶ Succeeding in class and with faculty
  - ▶ The co-curricular experience
  - ▶ Utilizing campus resources

## Workshop #2

- ▶ Habits of successful students
- ▶ Organizational skills
- ▶ Time management
- ▶ Short-term and long-term goal setting
- ▶ Self-advocacy

# Transition Touchpoints

*Fall/Spring*

## Discussion Items

- How have you experienced your first semester on your new campus?
- How have you established relationships on campus?
- How are you balancing work/life responsibilities?
- How can this network of Guttman alums be helpful to you as you move forward next semester?

## Transfer Mentor Announcements

- Upcoming events on campus
- Resource highlights
- Future events/further contact





# Transfer Planning and Decisionmaking



- ▶ Transfer lingo from the get-go
- ▶ The second-year advising curriculum
- ▶ Advisor-led peer-to-peer interactions
- ▶ Technology-mediated transfer advising

# Program Assessment

## ▶ Advising

- ▶ Post-activity surveys: What I learned/what I still need to know
  - ▶ “I learned that communication and assertiveness is essential [at a senior college]”
- ▶ Best-attended events: Transfer Fair, Transfer Panel
- ▶ Tracking new advisor in residence program
- ▶ Starfish speednotes and completion of ePortfolio modules

## ▶ Transfer Bridge

- ▶ Participation data (TB Workshops: 20, Fall/Spring Touchpoints 66)
- ▶ Transfer Peer Mentor qualitative reflections
- ▶ Workshop & Touchpoint evaluation data
  - ▶ “I valued being able to speak with other people who had the same Guttman experience and sharing our highs and lows at our [senior] college.”

# Questions and Comments?

