

MIDDLE STATES SELF-STUDY

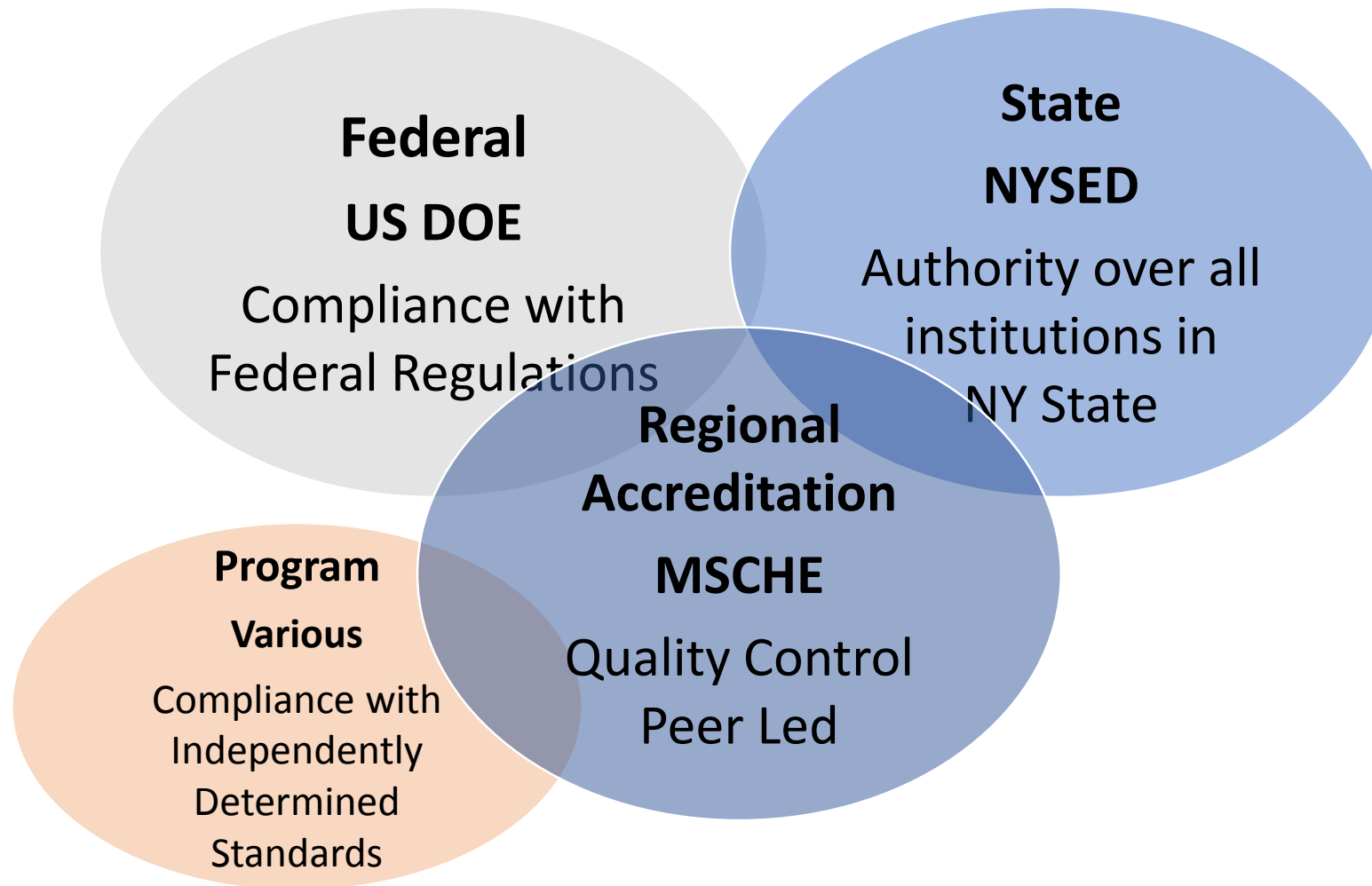
ASSESSING AND PROGRESSING

New York City Campus Town Hall
November 16, 2017



PACE
UNIVERSITY

Accreditation within the Regulatory Environment



What is Self-Study?

- Self-Reflective analysis of Pace University's adherence to Middle States Requirements of Affiliation and Standards for Accreditation
- Self-Study goal:
 - Re-accreditation – required to continue to receive Title 4 Funding
 - Institutional Improvement – how can Pace be better
- 18-24 month process of data collection and analysis by cross-functional teams of faculty, staff, administrators and students
- Culminates in a visit by a team of peer evaluators who issues a report to the Middle States Commission

Requirements of Affiliation

1. Authorized to operate

2. Operates

3. Graduated one class

4. Communicates in English

5. Regulatory compliance

6. Policy compliance

7. Mission and goals

8. Evaluates programs

9. Rigor, coherence, and assessment

10. Integrated planning

11. Resources

12. Governance

13. Governance and conflict of interest

14. Governance and accurate institutional information

15. Faculty

Standards for Accreditation

I. Mission and Goals

II. Ethics and Integrity

III. Design and Delivery of the Student Learning Experience

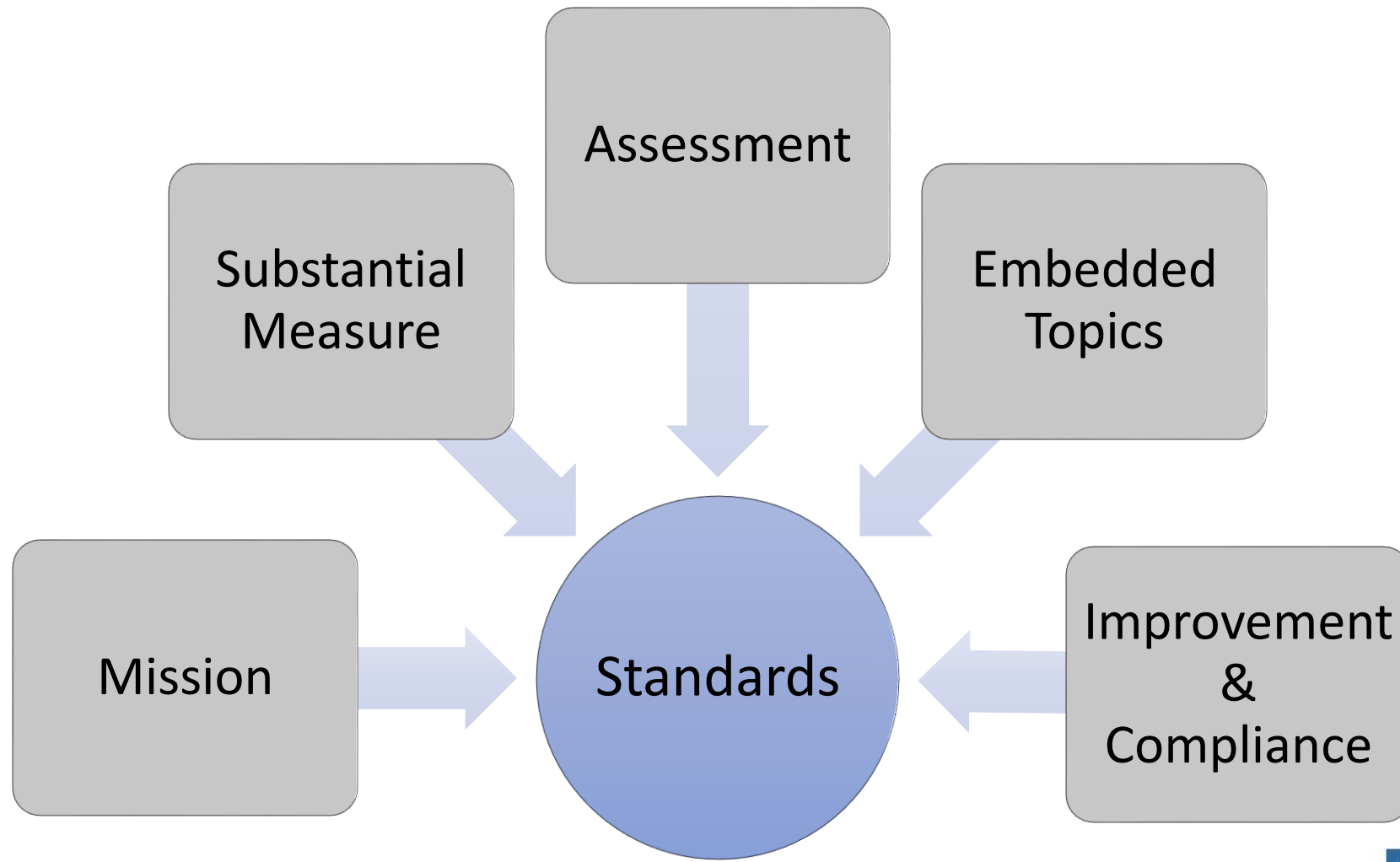
IV. Support of the Student Experience

V. Educational Effectiveness Assessment

VI. Planning, Resources, and Institutional Improvement

VII. Governance, Leadership, and Administration

Key Elements of Each Standard



Important Areas of Focus

Integration of student learning goals with planned student learning experiences

Periodic assessment

Defensibility of assessment approaches utilized

Description of extent of student achievement

Consideration of results by key stakeholders

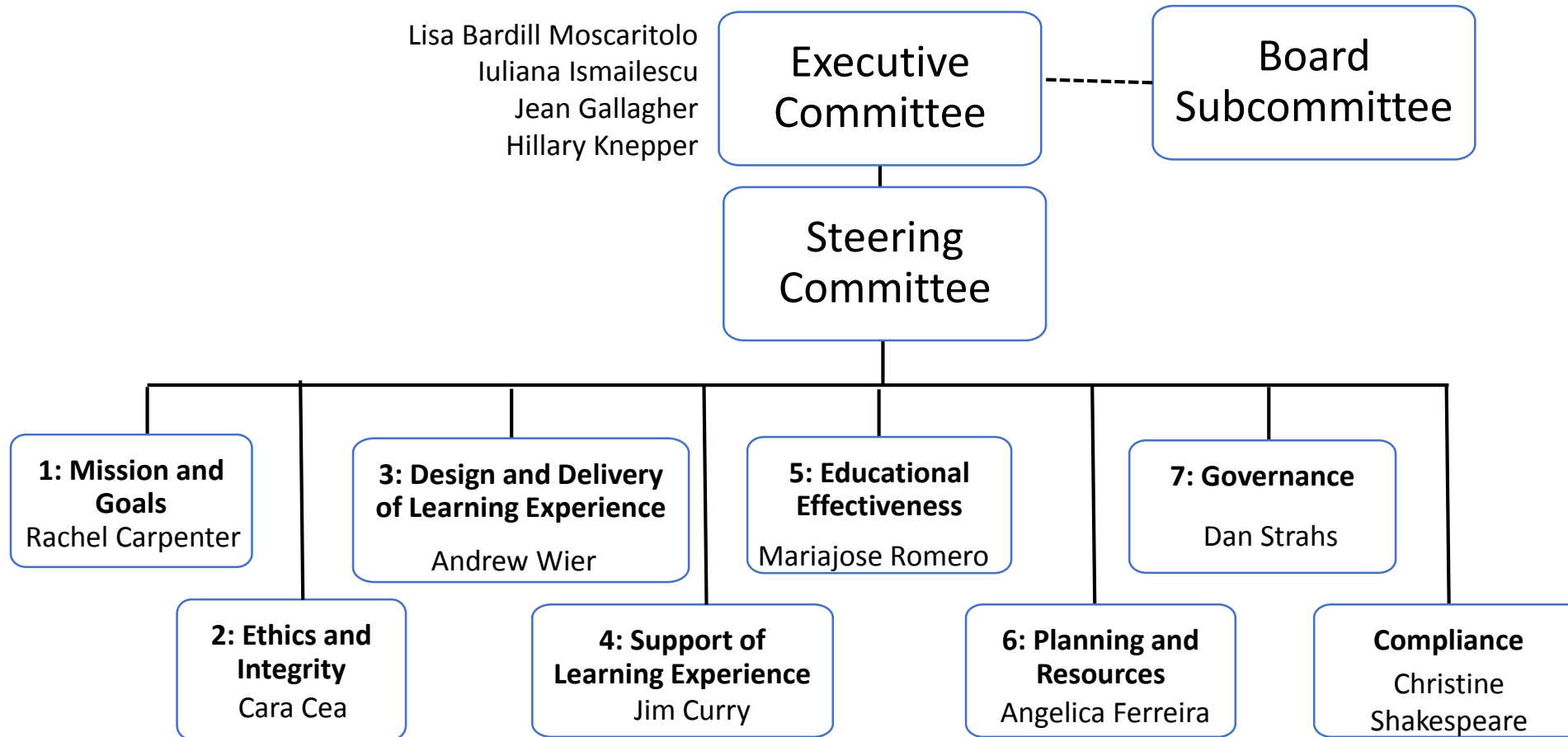
Linked to budgeting, planning, resource allocation

6

Pace Self-Study - Timeline

- 9/2017 - Self-Study Design Submitted and approved
- AY1718 - Research and Analysis
- Summer 2018 – Report Drafting
- Fall 2018 – Community Review
- January 2019 – Report Submitted
- March/April 2019 – Team Visit
- June 2019 - Commission Decision

Pace Self-Study Structure



Pace Self-Study Goals

1. Achieve reaccreditation from the Middle States Commission on Higher Education.
2. Assess the effectiveness of experiential learning opportunities across the institution to evaluate how learning from those experiences contributes meaningfully to student education.
3. Evaluate how assessment of student learning and related institutional improvement actions contribute to student and alumni outcomes.
4. Outline the processes by which Pace's institutional decision-making, including planning and resource allocation, are aligned and enable Pace to meet its mission in the current and future higher education environments.
5. Analyze whether the research and teaching requirements of Pace faculty are well supported by the university's administration and staff, and whether the university meets the needs of all its constituencies and provides adequate resources for continuous improvement.
6. Identify opportunities to improve the effectiveness and efficacy of University policies, processes, and procedures in support of Pace's mission.

Ensuring a Successful Self-Study

- Participate!
- Reflect and Assess
- Solicit and engage input from Peers
- Put students and student experience at the center
- Be well organized and deliver a well-written, cohesive report

Questions?

- www.pace.edu/middlestates
- Executive Committee
 - Lisa Bardill Moscaritolo, lbardillmoscaritolo@pace.edu
 - Iuliana Ismailescu, iismailescu@pace.edu
 - Jean Gallagher, jgallagher2@pace.edu
 - Hillary Knepper, hknepper@pace.edu