

Middle States

Update to Board of Trustees
March 1, 2017

Pace and Middle States

- **Monitoring Report** submitted April, 2016
 - Three Standards: Institutional Resources (3), Institutional Effectiveness (7) and Student Learning Outcomes (14)
 - Accepted by Middle States
- Requested a **Progress Report** due April 1, 2017
 - Institutional Effectiveness (7) and Student Learning Outcomes (14)
- **Self-Study** Team Visit in AY2018-19
 - Two year process to develop self study report and prepare for team visit

Progress Report

- Due April 1, 2017
- Institutional Effectiveness
 - Strategic Plan Assessment
 - Co-Curricular Assessment Plans and Status
 - Online Program Assessment
- Student Learning Outcomes
 - Schools/Colleges Assessment Data (including online)
- Ensuring a sustainable cycle of assessment and institutional improvement linked to resource allocation

Self Study Addresses Seven Standards

I. Mission and Goals

II. Ethics and Integrity

III. Design and Delivery of the Student Learning Experience

IV. Support of the Student Experience

V. Educational Effectiveness Assessment

VI. Planning, Resources, and Institutional Improvement

VII. Governance, Leadership, and Administration

Self Study - Important Areas of Focus

Integration of student learning goals with planned student learning experiences

Periodic assessment

Defensibility of assessment approaches utilized

Description of extent of student achievement

Consideration of results by key stakeholders

Linked to budgeting, planning, resource allocation

Self-Study - Timeline

Self-Study Design

- An outline of the self-study report and defines the process.
- Due **August, 2017**
- Middle States Liaison Visit, **September 13, 2017**, followed by comments and approval

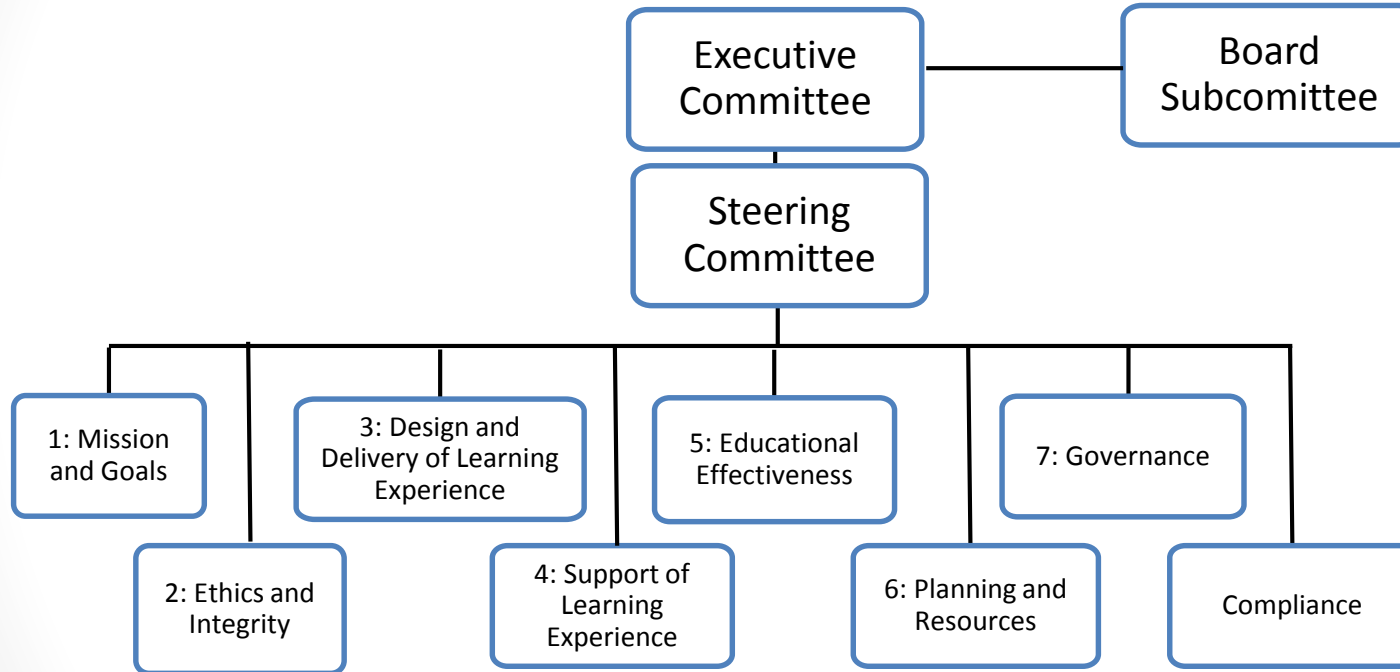
Research and Analysis

- Working Groups research and analysis, AY17-18
- Draft Report to Community to Review, Fall, 2018

Final Report and Team Visit

- Final Report due January, 2019
- Team Visit in Spring, 2019
- Commission Decision in June, 2019

Self-Study Structure



Self-Study Structure

- Executive Committee
 - Jean Gallagher, Lisa Bardill-Moscaritolo, Hilary Knepper, Iuliana Ismailescu
- Steering Committee
 - Composed of Executive Committee, Working Group chairs and support
 - Board liaison
- Working Groups
 - One for each Standard, plus one for Compliance
 - Broad University representation with knowledge of assessment and compliance
 - 5- 7 members per group
 - Faculty representation on each
 - Students invited to each